

## Raincoat With Hood - Sewing Pattern #2502

Recommendations on fabric: natural/mixed fabrics suitable for raincoats.

You will also need: fusible interfacing; separating zipper; small shoulder pads.

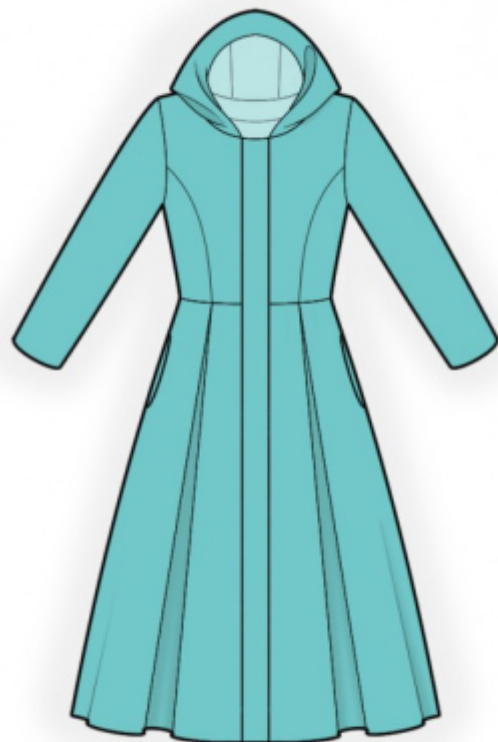
Seam allowances: all seams 1 cm; seam allowance for hem of garment and hem of sleeve - 3 cm.

### **Note on seam allowances:**

- If the pattern has double contour the seam allowances are included. They are 1 cm unless specified otherwise.
- If the pattern has single contour, the seam allowances are NOT included and need to be added when laying out the pattern.

### **Note on length of fabric:**

*Attention! The amount of fabric needed for your pattern is not included. It will depend on the selected pattern size, the width, and design of the fabric you plan to use. First, print all the paper patterns and lay them out at the width of fabric you plan to use (usually from 90 to 150 cm). Measure how much fabric you will need. Don't forget to account for pieces that need to be cut multiple times and pieces that are cut on the fold.*



## **CUTTING:**

### **Note on cutting:**

*On the pattern pieces, "beam" means straight of grain. Lay out your pieces accordingly. Some pieces will be cut on the fold. This is noted on the pattern piece. Mark all notches and other design features such as pleats etc. from the pattern onto your fabric.*

*When sewing the garment, pay attention to notches, they must match up.*

Main fabric:

1. Upper center back - cut 1 on fold
2. Upper side back - cut 2
3. Lower back - cut 1 on fold
4. Upper center front - cut 2
5. Upper side front - cut 2
6. Lower front - cut 2

7. Sleeve - cut 2
8. Back neck facing - cut 1
9. Center front facing - cut 2
10. Placket - cut 1
11. Pocket bag - cut 4
12. Hood - cut 2
13. Center hood - cut 1
14. Hood facing - cut 2

Fusible interfacing:

1. Back neck facing - cut 1
2. Center front facing - cut 2
3. Placket - cut 1
4. Hood facing - cut 1

## **INSTRUCTIONS:**

1. Apply fusible interfacing.
2. Sew princess seams on upper back, press towards center, serge. Sew a decorative stitch at 0,2 cm from seam. Make and baste a box pleat on Lower Back. Sew upper back to lower back, press towards top and serge. Sew a decorative stitch at 0,2 cm from seam.
3. Sew princess seams on upper front, press towards center, serge. Sew a decorative stitch at 0,2 cm from seam. Make and baste a box pleat on lower front. Sew upper front to lower front, press towards top and serge. Sew a decorative stitch at 0,2 cm from seam.
4. Pin fronts right sides together and adjust edges, measure the length of center front edges. Sew zipper to the center front edge (zipper blade should be faced away from center edge).
5. Sew shoulder seams, press seams towards back, serge.
6. Sew pocket bags to back and to front. Sew side seams, sewing the pocket bags at the same time, press towards front and serge.
7. Sew side hoods to center hood, press seam allowances towards center part, serge. Sew a decorative stitch at 0,2 cm from seam.
8. Pin hood facings together, right sides together and sew outer edge. Turn facing right side out, straighten, press. Sew outer facing to hood, press towards facing. Turn under the seam allowance of inner facing and topstitch into the seam of outer facing (stitch-in-the-ditch). Sew hood into neckline.
9. Sew shoulder edges of center front facings and back neckline facing, press seam apart. Serge outer edge.

Pin center front facings onto shell right sides together and sew center front facings and back neckline. Clip into curves, trim away corners. Turn right side out center front facings onto wrong side, straighten and press. Slipstitch to garment along the shoulder seams.

10. Sew sleeve seam, serge and press. Sew sleeves into armholes, serge and press. Sew on shoulder pads.

11. Serge lower edge of garment, press onto wrong side and topstitch.

12. Fold placket in half lengthwise right sides together and sew corners. Turn right side out and press. Sew decorative stitches along outer fold, along upper and lower edge. Serge inner edge. Pin placket onto front (the fold is directed away from center front edge) and topstitch along the marked line. Fold placket, covering the closure and topstitch along the seam.

## **TECHNICAL DRAWING:**

