

## Dress With Patch Pockets - Sewing Pattern #2490

Recommendations on fabric: natural/mixed fabric suitable for dresses.

You will also need: fusible interfacing; dress zipper.

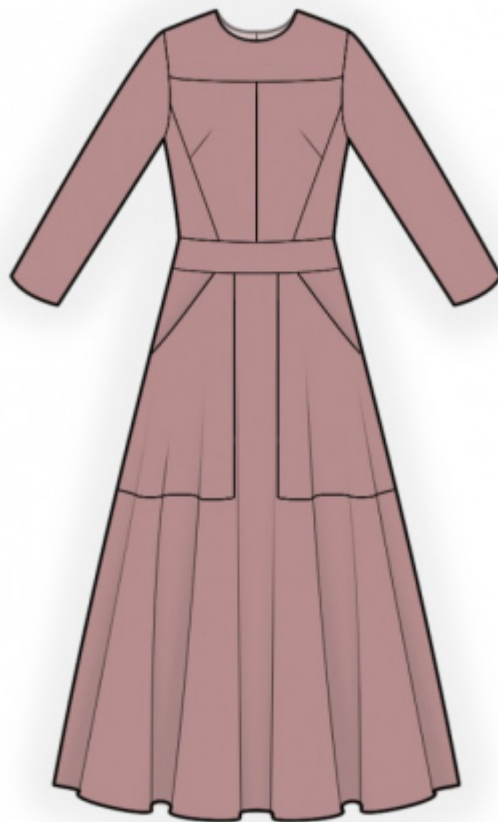
Seam allowances: all seams 1 cm; seam allowance for hem – 1.5 cm; seam allowance for hem of sleeve – 2.0 cm.

### Note on seam allowances:

- If the pattern has double contour the seam allowances are included. They are 1 cm unless specified otherwise.
- If the pattern has single contour, the seam allowances are NOT included and need to be added when laying out the pattern.

### Note on length of fabric:

Attention! The amount of fabric needed for your pattern is not included. It will depend on the selected pattern size, the width, and design of the fabric you plan to use. First, print all the paper patterns and lay them out at the width of fabric you plan to use (usually from 90 to 150 cm). Measure how much fabric you will need. Don't forget to account for pieces that need to be cut multiple times and pieces that are cut on the fold.



## CUTTING:

### Note on cutting:

On the pattern pieces, "beam" means straight of grain. Lay out your pieces accordingly. Some pieces will be cut on the fold. This is noted on the pattern piece. Mark all notches and other design features such as pleats etc. from the pattern onto your fabric.

When sewing the garment, pay attention to notches, they must match up.

Main fabric:

1. Upper center back - cut 2
2. Upper side back - cut 2
3. Back belt - cut 2
4. Lower back - cut 2
5. Front yoke — cut 1
6. Upper center front — cut 2
7. Upper side front — cut 2

8. Front belt - cut 1
9. Lower front — cut 1 on fold
10. Sleeve - cut 2
11. Pocket - cut 2
12. Back neck facing - cut 2
13. Front neck facing - cut 1

Fusible interfacing:

1. Back neck facing - cut 2
2. Front neck facing - cut 1

## INSTRUCTIONS:

1. Apply fusible interfacing.
2. Sew side backs to center back, press towards center and serge. Sew back belt to upper part, press seam allowances towards belt and serge. Sew upper back to lower back, press seam allowances towards top and serge.
3. Serge separately center back edges. Sew center back seam from notch for zipper to bottom, press seam apart, pressing the slit for zipper at the same time. Sew in zipper.
4. Sew front darts on front, press bulk towards top. Sew side fronts to front, press towards center and serge. Sew center seam on upper back, press seam allowances towards left and serge.
5. Sew yoke to front, press towards top and serge. Sew front belt to upper piece, press seam allowances towards belt and serge.
6. Apply fusible interfacing to pocket opening. Cut or use ready-made bias tape, its width should equal 4 cm and its length should equal the length of pocket opening + 5 cm. Fold bias tape in half lengthwise right side out and press. Pin bias tape to pocket opening from the right side and sew. Clip into seam allowances. Fold bias tape onto wrong side and topstitch onto main piece along the seam. Press seam. Serge the center and the lower edges of pocket, press onto wrong side. Pin pocket onto front skirt according to the markings and topstitch. Baste the upper and the side edges of the pocket to the edges of the skirt.
7. Sew upper front to lower front, press towards top and serge.
8. Sew shoulder and side seams, press seams towards back and serge.
9. Sew shoulder seams of neck facings, press seam apart. Serge outer edge. Pin facing to garment right sides together and sew the neckline. Clip into curves, turn pieces right side out, straighten, press. Slipstitch facing to garment along the shoulder seam and the zipper tape.

10. Sew sleeve seam, press towards back and serge. Sew sleeves into armholes, serge and press.
11. Serge hem of garment and lower edge of sleeve, press onto wrong side and topstitch.

**TECHNICAL DRAWING:**

