

Blouse With Lining - Sewing Pattern #2475

Recommendations on fabric: natural/mixed fabrics suitable for blouses. Silk, chiffon.

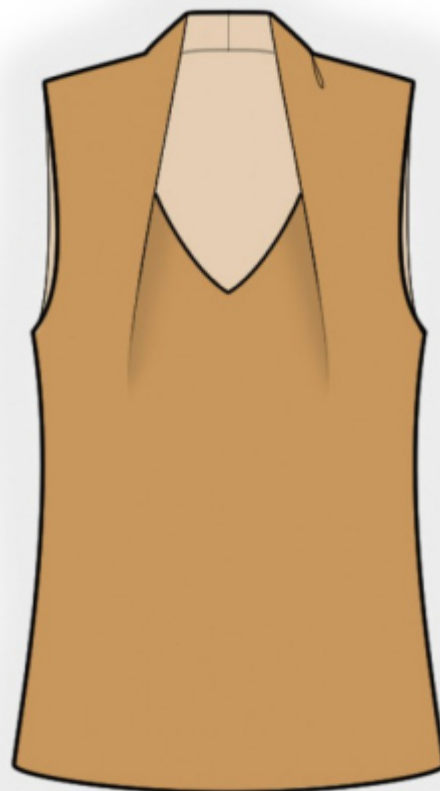
Seam allowances: all seams 1 cm. Seam allowance along the lower edge of the garment and of lining - 2 cm.

Note on seam allowances:

- If the pattern has double contour the seam allowances are included. They are 1 cm unless specified otherwise.
- If the pattern has single contour, the seam allowances are NOT included and need to be added when laying out the pattern.

Note on length of fabric:

Attention! The amount of fabric needed for your pattern is not included. It will depend on the selected pattern size, the width, and design of the fabric you plan to use. First, print all the paper patterns and lay them out at the width of fabric you plan to use (usually from 90 to 150 cm). Measure how much fabric you will need. Don't forget to account for pieces that need to be cut multiple times and pieces that are cut on the fold.



CUTTING:

Note on cutting:

On the pattern pieces, "beam" means straight of grain. Lay out your pieces accordingly. Some pieces will be cut on the fold. This is noted on the pattern piece. Mark all notches and other design features such as pleats etc. from the pattern onto your fabric.

When sewing the garment, pay attention to notches, they must match up.

Main fabric:

1. Back - cut 1 on fold
2. Back lining - cut 1 on fold
3. Front - cut 1 on fold
4. Front lining - cut 1 on fold

INSTRUCTIONS:

1. Sew shoulder and side seams of lining. Press seam apart. Fold inside the seam allowance of the hem of lining two times by 1 cm and topstitch.
2. Sew center collar seam. Press seam apart.
3. Clip into seam allowance of Front near the shoulder seam. Sew shoulder seams of the upper part, press seam apart.
4. Sew side seams. Serge seams and press towards back.
5. Pin lining to the main piece right sides together and sew back neckline and front neckline, sewing the collar at the same time. Clip seam allowances and press. Fold lining towards wrong side and press the front neckline.
6. Sew armhole in two steps: first sew front armhole then sew back armhole. Clip seam allowances and press.
7. Serge lower edge of garment. Press onto wrong side and topstitch.

TECHNICAL DRAWING:

