

Dress With Inset - Sewing Pattern #2464

Recommendations on fabric: natural/mixed knit fabric of small stretchiness. Knit fabric of small stretchiness in contrasting or similar color for decoration.

You will also need: fusible interfacing, zipper, 3 buttons.

Seam allowances: all seams 1 cm; seam allowance along the slanted edge of the left front – 2 cm; seam allowance along upper edge of pocket – 2 cm; seam allowance for hem of garment and hem of sleeve – 2.0 cm.

Note on seam allowances:

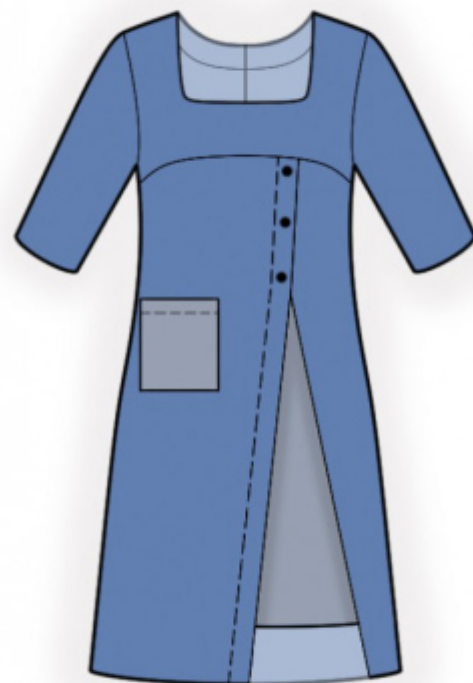
- If the pattern has double contour the seam allowances are included. They are 1 cm unless specified otherwise.
- If the pattern has single contour, the seam allowances are NOT included and need to be added when laying out the pattern.

Note on length of fabric:

Attention! The amount of fabric needed for your pattern is not included. It will depend on the selected pattern size, the width, and design of the fabric you plan to use. First, print all the paper patterns and lay them out at the width of fabric you plan to use (usually from 90 to 150 cm). Measure how much fabric you will need. Don't forget to account for pieces that need to be cut multiple times and pieces that are cut on the fold.

Note on working with stretchy fabric:

Knitted fabric pieces are sewn together with special elastic or narrow zig-zag stitch. Seam allowance on hems can be stitched with twin needles to save stretchiness. Pieces can also be sewn together with a serger. When serging, cut seam allowances to 0.6 – 0.8 cm.



CUTTING:

Note on cutting:

On the pattern pieces, "beam" means straight of grain. Lay out your pieces accordingly. Some pieces will be cut on the fold. This is noted on the pattern piece. Mark all notches and other design features such as pleats etc. from the pattern onto your fabric.

When sewing the garment, pay attention to notches, they must match up.

Main fabric:

1. Back - cut 2
2. Right front - cut 1
3. Left front - cut 1
4. Front yoke - cut 1
5. Front neck facing — cut 1
6. Back neck facing - cut 2
7. Sleeve — cut 2

Decorative fabric:

1. Inset - cut 1
2. Pocket — cut 1

Fusible interfacing:

1. Front neck facing — cut 1
2. Back neck facing - cut 2

INSTRUCTIONS:

1. Apply interfacing to facings. Apply a strap of fusible interfacing along the upper seam allowance of pocket.
2. Sew waist darts on back, press bulk towards center.
3. Serge separately center back edges. Sew center back seam from notch for zipper to bottom, press seam apart, pressing the slit for zipper at the same time. Sew in zipper.
4. Upper pocket edge serge, press onto wrong side and topstitch. Serge the side edges and the lower edge of the pocket, press onto wrong side. Pin pocket onto the right front according to the markings and topstitch.
5. Serge the lower edge of inset, press onto wrong side and topstitch. Clip into seam allowance on the left front near the marking, serge slanted edge from notch to bottom, press onto wrong side and topstitch. Pin left front onto inset, baste together along edges and treat as one piece in the future.
6. Sew inset to right front, serge and press. Make a pleat on the right front according to the markings and topstitch it into the seam of inset from the right side.
7. Sew yoke to front, press seam allowances towards top and serge.
8. Sew side and shoulder seams, press seams towards back and serge.
9. Sew shoulder seams of neck facings, serge outer edge. Pin facing to garment right sides together and sew the neckline. Clip into curves, turn facing under, straighten and press. Slipstitch facing to shoulder seams and to zipper tape.

10. Sew sleeve seam, serge and press. Sew sleeves into armholes, matching notches. Serge and press.
11. Serge hem of garment and lower edge of sleeve, press onto wrong side and topstitch.
12. Sew on buttons onto the front pleat, fixing it.

TECHNICAL DRAWING:

