

Blouse With Ties - Sewing Pattern #2462

Recommendations on fabric: natural/mixed fabrics with elastane suitable for dresses. Natural/mixed knit fabric of small stretchiness.

You will also need: fusible interfacing.

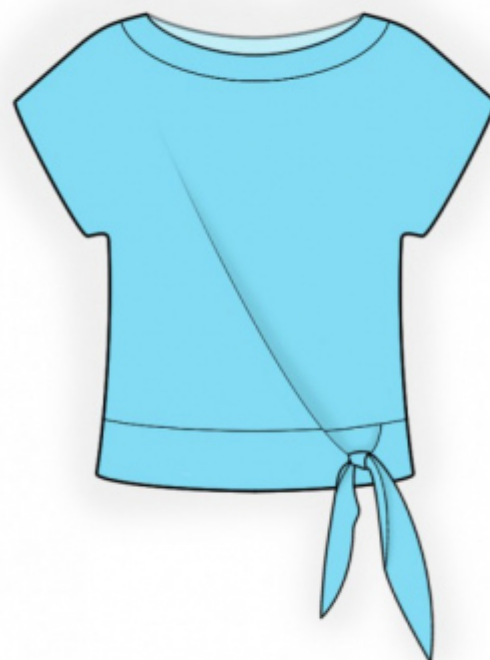
Seam allowances: all seams 1 cm. Seam allowance for hem of garment and hem of sleeve - 2 cm.

Note on seam allowances:

- If the pattern has double contour the seam allowances are included. They are 1 cm unless specified otherwise.
- If the pattern has single contour, the seam allowances are NOT included and need to be added when laying out the pattern.

Note on length of fabric:

Attention! The amount of fabric needed for your pattern is not included. It will depend on the selected pattern size, the width, and design of the fabric you plan to use. First, print all the paper patterns and lay them out at the width of fabric you plan to use (usually from 90 to 150 cm). Measure how much fabric you will need. Don't forget to account for pieces that need to be cut multiple times and pieces that are cut on the fold.



CUTTING:

Note on cutting:

On the pattern pieces, "beam" means straight of grain. Lay out your pieces accordingly. Some pieces will be cut on the fold. This is noted on the pattern piece. Mark all notches and other design features such as pleats etc. from the pattern onto your fabric.

When sewing the garment, pay attention to notches, they must match up.

Main fabric:

1. Back - cut 1 on fold
2. Front - cut 1 on fold
3. Back neck facing - cut 2
4. Front neck facing - cut 2
5. Back belt - cut 2
6. Front belt - cut 2
7. Inner tie - cut 2

8. Outer tie – cut 2

Fusible interfacing:

1. Back neck facing – cut 1
2. Front neck facing – cut 1

INSTRUCTIONS:

1. Apply fusible interfacing.
2. Sew back neckline facing to back, press seam allowances towards placket. Sew outer back belt to belt, press seam allowances towards belt.
3. Sew front neckline facing to facing, press seam allowances towards placket.
4. Fold inner tie, right sides together and sew along side edges. Clip seam allowances, trim away corner, turn the tie right side out, straighten, press. Fold outer tie, right sides together and sew along side edges. Clip seam allowances, trim away corner, turn the tie right side out, straighten, press.
5. Pin together front belt right sides together and sew lower edge, inserting the outer tie. Sew the opening of the front belt. Clip into curves, turn belt right side out, straighten, press.
6. Pin front belt onto inner tie and baste together along upper edge. Sew front belt to front, serge and press.
7. Sew shoulder seams, press seams towards back and serge.
8. Sew the shoulder edges of inner neckline facings, press seam apart. Serge outer edge. Pin facing onto garment right sides together and sew the neckline. Clip into curves, turn facing under and press. Topstitch inner facing into the seam of outer facing (stitch-in-the-ditch).
9. Serge the upper edge of inner back belt. Pin inner back belt onto outer back belt and sew the lower edge. Start and stop stitching exactly at the marked line of the side seam. Sew side seams and sleeve seams continuously, inserting front between back and back belt, press seams towards back and serge. Turn belt right side out and topstitch into the seam of outer belt (stitch-in-the-ditch).
10. Serge lower edge of sleeve, press onto wrong side and topstitch.
11. Thread the outer tie into the opening in the belt and tie a knot.

TECHNICAL DRAWING:

