

## Dress Without Sleeves - Sewing Pattern #2463

Recommendations on fabric: natural/mixed fabric suitable for dresses.

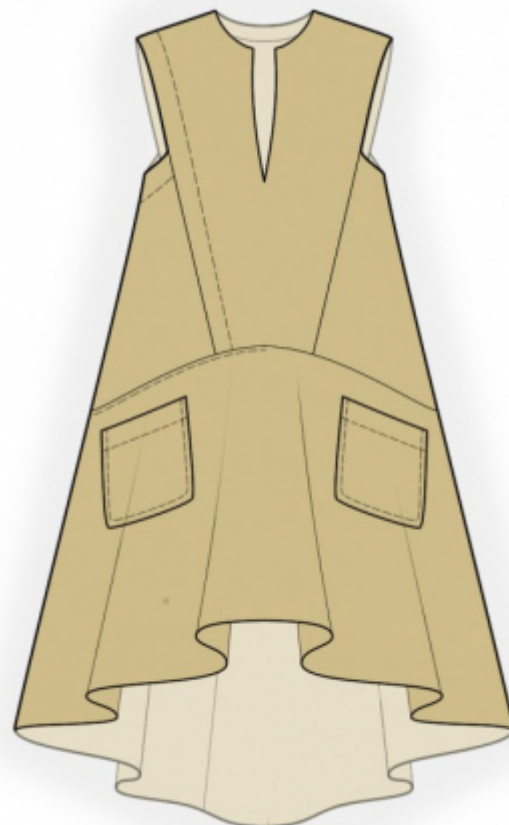
Seam allowances: all seams 1 cm. Seam allowance along the lower edge of the garment - 1.5 cm. Upper pocket edge - 1.5 cm.

### Note on seam allowances:

- If the pattern has double contour the seam allowances are included. They are 1 cm unless specified otherwise.
- If the pattern has single contour, the seam allowances are NOT included and need to be added when laying out the pattern.

### Note on length of fabric:

*Attention! The amount of fabric needed for your pattern is not included. It will depend on the selected pattern size, the width, and design of the fabric you plan to use. First, print all the paper patterns and lay them out at the width of fabric you plan to use (usually from 90 to 150 cm). Measure how much fabric you will need. Don't forget to account for pieces that need to be cut multiple times and pieces that are cut on the fold.*



## CUTTING:

### Note on cutting:

*On the pattern pieces, "beam" means straight of grain. Lay out your pieces accordingly. Some pieces will be cut on the fold. This is noted on the pattern piece. Mark all notches and other design features such as pleats etc. from the pattern onto your fabric.*

*When sewing the garment, pay attention to notches, they must match up.*

Main fabric:

1. Upper center back - cut 2 on fold
2. Upper side back - cut 2
3. Lower back - cut 1 on fold
4. Upper center front - cut 2 on fold
5. Upper side front - cut 2
6. Lower front - cut 1 on fold

## 7. Pocket - cut 2

### **INSTRUCTIONS:**

1. Sew shoulder seams on inner and outer pieces. Press seam apart. Pin central pieces together, right sides together and sew the neckline and slit. Clip into seam allowance, trim away corner, fold away inner part onto wrong side and press.
2. Sew armholes in two steps-first on the left side, then on the right side. Straighten seams and press.
3. Sew side edges on side pieces. Serge seams and press towards back. Finish the upper part of armhole: Cut or use ready-made bias tape, its width should equal 4 cm and length should equal the length of armhole + 4 cm. Fold bias tape in half lengthwise right side out and press. Pin bias tape to armhole edge from the right side and sew. Clip into seam allowances. Fold bias tape onto wrong side and topstitch onto main piece along the seam. Press seam.
4. Sew the edges of princess seams on the side pieces. Pin center front onto side front, match the edge with the topstitching line and baste together. Baste back to side piece in the same way. Topstitch decorative stitch lines according to the marked lines.
5. Serge pocket edges. Fold inside upper pocket edge and topstitch. Pin pocket at lower front and topstitch along the side edges and the lower edge.
6. Sew side seams of lower parts. Serge seams and press towards back. Sew upper part of dress to lower part of dress. Serge and press towards bottom.
7. Serge lower edge of garment. Press onto wrong side and topstitch.

### **TECHNICAL DRAWING:**

