

Sewing Pattern — Dress 5989

Recommendations on fabric: natural or mixed costume / dress fabric, crepe for collar

You will also need: interfacing, blind zipper

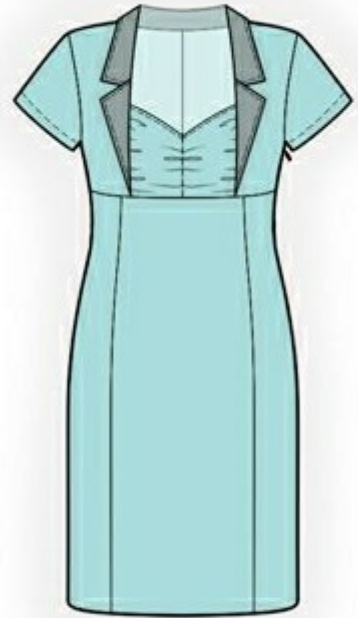
If the pattern has double contour the seam allowances are included.

Seam allowances are NOT included by default and need to be added when laying out and cutting details if your pattern has single contour.

Seam allowances: all seams - 1 cm; along long sides of the strap – 0 cm; on hem of sleeve – 1.5 cm; on hem of the dress – 2.0 cm; along vent – 6 cm

Attention! First of all please print all the paper patterns and lay them out at the width of fabric you plan to use (usually from 90 to 150 cm) to see how much fabric you will need. Don't forget to count pair parts and symmetrical parts.

When sewing the garment, pay attention to notches, they must coincide.



CUTTING:

Main fabric:

1. Upper central back part - 2 details
2. Upper side back part - 2 details
3. Lower central back part - 2 details
4. Lower side back part - 2 details
5. Upper central front part – 2 detail
6. Upper side front part – 2 details
7. Lower central front part - 1 detail
8. Lower side front part - 2 details
9. Sleeve - 2 details
10. Strap - 1 detail

Crepe:

1. Collar – 1 detail
2. Lapel – 2 details

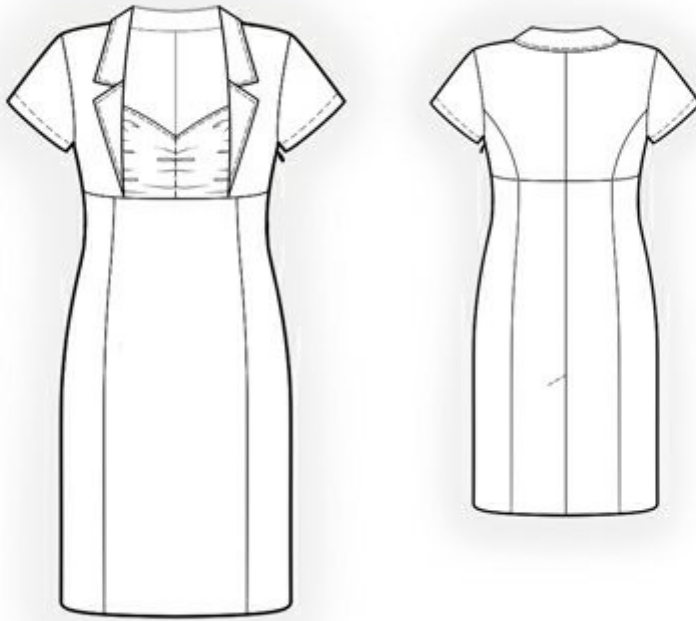
Interfacing:

1. Collar – 2 details
2. Lapel – 4 details

INSTRUCTIONS:

1. Apply interfacing to lower collar and lapels.
2. Sew darts on details of upper back part. Press depths of darts towards center. Sew center edge of upper back part, press seam allowances to the left and finish them.
3. Sew princess edges on upper back parts, press seam allowances towards center and finish them.
4. Sew shoulder seams, press seam onto back part and finish it.
5. Finish upper edge of upper central front part, press onto wrong side and topstitch. Stitch loosely along center edge and gather ruffles. Press the strap crosswise wrong sides together. Stitch the strap to one of central front parts, press seam onto front part and finish it. Stitch the strap to another central front part, trying to get into present seam. Press seam allowances onto front part and finish it.
6. Fold top and lower collars right sides together and overstitch along collar fall and ledge. Slash seam near marker «o». Turn collar out and press. Put lapel details right sides together and overstitch on outer side and ledge up to marker. Slash seam near ledge marker, turn lapels out and press. Stitch top and lower collar to lapels separately along gorge line. Press apart the seam.
7. Put ready collar and lapels onto upper part of the dress and stitch: from lower edge of upper side front part up to marker «o-», then slash top collar, turn it back and stitch only lower collar into the neckline up to marker «o-» on other front part. Slash seam allowance of top collar and, starting from the marker, stitch again both collars.
8. Stitch loosely along princess edge of upper central front part and gather ruffles. Stitch upper central front part to side part from hem up to marker «o-» (lapel is between them). Slash seam allowances, press to side edge and finish.
9. Press seam allowances of collar connecting seam onto collar. Turn open inner edge of collar under and topstitch into collar connecting seam. Attach collar and lapels along gorge line. Put decorative stitch on collar and lapel.
10. Apply interfacing to the vent on both details of lower central back part from the wrong side. Mark center seam line (vent fold line) from the right side. Finish center edge of back part separately on each detail, finishing the vent at the same time. Sew center edge of back part from top edge up to edge of the vent. Slash away corner of vent seam allowance on right part. Press seam allowances of center seam, pressing the vent. Press right side of the vent at 1 cm onto wrong side and topstitch. Press seam allowances of the vent to left side and topstitch on the top with machine stitch.
11. Sew cord edges on lower back part, press seam allowances towards center and finish. Sew cord edges on lower front part, press seam allowances towards center and finish.
12. Sew together upper and lower back parts, press seam allowances upwards and finish. Sew together upper and lower front parts, press seam allowances downwards and finish.
13. Sew right side edge, press seam onto back part and finish it. Finish left side edges separately. Sew left side edge from the armhole up to top marker and from lower marker up to hem. Sew zipper between markers.
14. Sew hem of sleeve. Press and finish seam allowances. Sew sleeve into armhole, leveling notches. Press and finish seam allowances. Finish hem of sleeve, press onto wrong side and topstitch.
15. Finish hem of the dress serge, press onto wrong side and undersew with invisible stitches.

TECHNICAL DRAWING:



•