

Double-Breasted Dress - Sewing Pattern #2423

Recommendations on fabric: natural/mixed fabric suitable for dresses.

You will also need: fusible interfacing, 6 buttons.

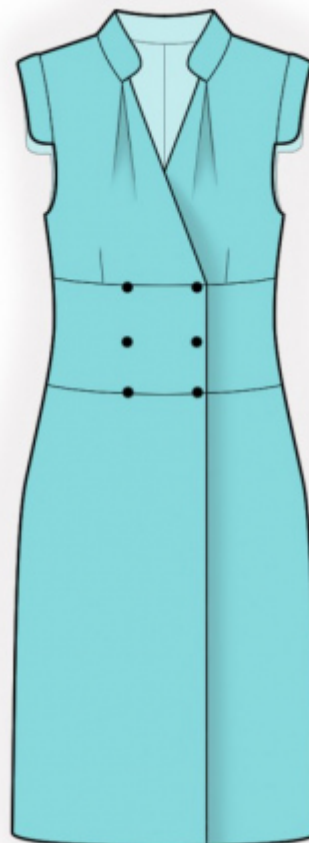
Seam allowances: seam allowance for hem of garment — 2.0 cm, other seams 1 cm.

Note on seam allowances:

- If the pattern has double contour the seam allowances are included. They are 1 cm unless specified otherwise.
- If the pattern has single contour, the seam allowances are NOT included and need to be added when laying out the pattern.

Note on length of fabric:

Attention! The amount of fabric needed for your pattern is not included. It will depend on the selected pattern size, the width, and design of the fabric you plan to use. First, print all the paper patterns and lay them out at the width of fabric you plan to use (usually from 90 to 150 cm). Measure how much fabric you will need. Don't forget to account for pieces that need to be cut multiple times and pieces that are cut on the fold.



CUTTING:

Note on cutting:

On the pattern pieces, "beam" means straight of grain. Lay out your pieces accordingly. Some pieces will be cut on the fold. This is noted on the pattern piece. Mark all notches and other design features such as pleats etc. from the pattern onto your fabric.

When sewing the garment, pay attention to notches, they must match up.

Main fabric:

1. Upper back - cut 2
2. Center back waistband — cut 1
3. Side back waistband — cut 2
4. Lower back — cut 2
5. Upper front — cut 2
6. Front belt — cut 2
7. Lower front — cut 2

8. Center front facing — cut 2
9. Back neck facing – cut 1
10. Collar – cut 2
11. Sleeve – cut 4

Fusible interfacing:

1. Center front facing — cut 2
3. Back neck facing – cut 1
4. Collar – cut 1
5. Sleeve – cut 2

INSTRUCTIONS:

1. Apply fusible interfacing. Apply fusible interfacing to one-piece center front facings of the front waistband and lower front.
2. Sew darts on upper backs, press bulk towards center. Sew center seam on upper back, press towards left and serge.
3. Sew center back waistband to side back waistband, press towards center, serge. Sew back belt to upper part, press seam allowances towards belt and serge.
4. Sew dart on lower back. Press bulk towards center. Sew center seam on lower back, seam allowance press towards left and serge. Sew lower back to belt back. Serge and press towards belt.
5. Pin together collars right sides together and sew the short sides and the outer side. Trim seam allowances, turn right side out and press. Finish sleeves in the same way.
6. Sew dart on front. Press bulk towards center.
7. Sew shoulder seams. Press seams towards back and serge.
8. Insert collar between the sides of the pleat on Front and sew, continue sewing collar into the back neckline. Clip into seam allowance near shoulder seam and serge the area from the top of pleat to the shoulder seam.
9. Sew shoulder edges of center front facing and of the back neckline facings. Press seam apart. Serge outer edge. Pin center front facing and facing to neckline, right sides together, and sew front neckline and back neckline. Clip seam allowances, fold center front facing and facing onto wrong side and press. Slipstitch facing to shoulder seams by hand.
10. Sew front belt to lower front, press seam allowances towards belt and serge. Serge the outer seam allowance of the one-piece center front facing. Sew belt to upper part, wrapping the upper part with the one-piece center front facing. Serge and press towards bottom. Fold buttonstand towards wrong side and press.

11. Sew sleeves into armholes.
12. Sew side seams, press seams towards back and serge.
13. Cut or use ready-made bias tape, its width should equal 4 cm and length should equal the length of armhole + 6 cm. Fold bias tape in half lengthwise right side out and press. Pin bias tape to armhole edge from the right side and sew, covering the sleeve seam. Fold bias tape onto wrong side, clip into seam allowances and topstitch onto main piece along the seam. Press seam.
14. Serge lower edge of garment, press onto wrong side and topstitch.
15. Serge 6 button holes on right front. Sew on buttons onto left front according to button holes.

TECHNICAL DRAWING:

