

Dress With Contrasting Inset - Sewing Pattern #2408

Recommendations on fabric: natural/mixed knit fabric of small stretchiness in contrasting or similar color.

You will also need: knit fusible interfacing; 1 button.

Seam allowances: all seams 1 cm; seam allowance for hem of garment - 2.0 cm. Seam allowance along the upper edge of collar - 0 cm.

Note on seam allowances:

- If the pattern has double contour the seam allowances are included. They are 1 cm unless specified otherwise.
- If the pattern has single contour, the seam allowances are NOT included and need to be added when laying out the pattern.

Note on length of fabric:

Attention! The amount of fabric needed for your pattern is not included. It will depend on the selected pattern size, the width, and design of the fabric you plan to use. First, print all the paper patterns and lay them out at the width of fabric you plan to use (usually from 90 to 150 cm). Measure how much fabric you will need. Don't forget to account for pieces that need to be cut multiple times and pieces that are cut on the fold.

Note on working with stretchy fabric:

Knitted fabric pieces are sewn together with special elastic or narrow zig-zag stitch. Seam allowance on hems can be stitched with twin needles to save stretchiness. Pieces can also be sewn together with a serger. When serging, cut seam allowances to 0.6 - 0.8 cm.

CUTTING:

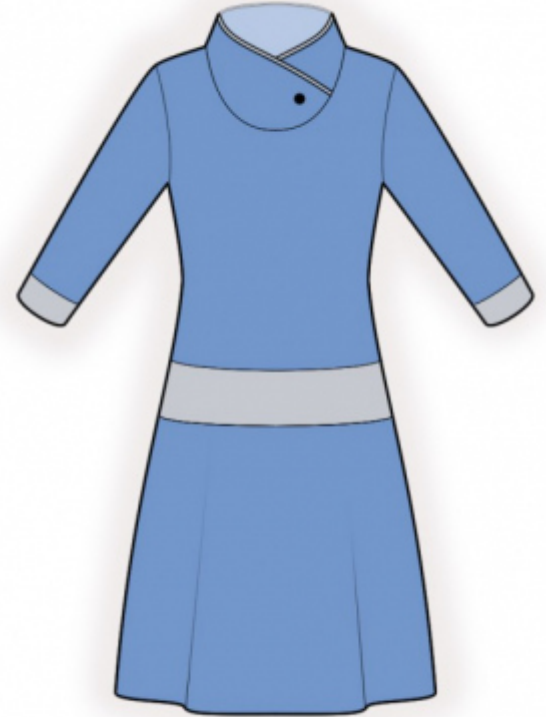
Note on cutting:

On the pattern pieces, "beam" means straight of grain. Lay out your pieces accordingly. Some pieces will be cut on the fold. This is noted on the pattern piece. Mark all notches and other design features such as pleats etc. from the pattern onto your fabric.

When sewing the garment, pay attention to notches, they must match up.

Main fabric:

1. Upper back - cut 2



2. Lower back - cut 1 on fold
3. Upper front - cut 1 on fold
4. Lower front - cut 1 on fold
5. Collar - cut 2 on fold
6. Sleeve - cut 2

Main fabric 1:

1. Back inset - cut 1 on fold
2. Front inset - cut 1 on fold
3. Cuff - cut 2

Fusible interfacing:

1. Collar - cut 1 on fold

INSTRUCTIONS:

1. Apply fusible interfacing to outer collar.
2. Sew darts on front, press bulk towards top. Sew center seam on upper back, press seam allowances towards left and serge.
3. Sew shoulder seams, press seams towards back and serge.
4. Pin together collars wrong sides together and baste together along edges. Cut a bias tape from Main Fabric 1, its width should equal 4 cm and its length should equal the length of the upper edge of collar + 4 cm. Finish the upper edge of collar with bias tape, press the piece. Pin right side of collar onto the left side and baste together. Sew collar into neckline, serge and press.
5. Sew back inset to upper back, press seam allowances towards top and serge. Sew lower back to back inset, press seam allowances towards top and serge.
6. Sew front inset to upper front, press seam allowances towards top and serge. Sew lower front to front inset, press seam allowances towards top and serge.
7. Sew side seams, press seams towards back and serge.
8. Sew sleeve seam, press seams towards back and serge. Sew sleeves into armholes, matching notches, serge and press.
9. Sew cuff into a ring, press seam apart. Fold cuff in half lengthwise and press right side out. Sew cuff to sleeve, press seam allowances towards sleeve and serge.
10. Serge bottom edge of garment, press onto wrong side and topstitch.

11. Sew on button at collar, fixing together the right part and the left part.

TECHNICAL DRAWING:

