

Dress With Wrap - Sewing Pattern #2368

Recommendations on fabric: natural/mixed suiting fabrics.

You will also need: fusible interfacing, dress zipper, decorative buckle.

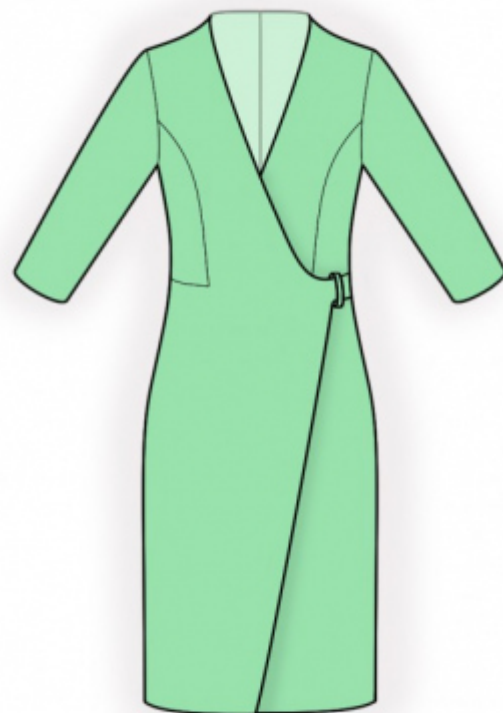
Seam allowances: all seams 1 cm; seam allowance for hem of dress and hem of sleeve – 3 cm.

Note on seam allowances:

- If the pattern has double contour the seam allowances are included. They are 1 cm unless specified otherwise.
- If the pattern has single contour, the seam allowances are NOT included and need to be added when laying out the pattern.

Note on length of fabric:

Attention! The amount of fabric needed for your pattern is not included. It will depend on the selected pattern size, the width, and design of the fabric you plan to use. First, print all the paper patterns and lay them out at the width of fabric you plan to use (usually from 90 to 150 cm). Measure how much fabric you will need. Don't forget to account for pieces that need to be cut multiple times and pieces that are cut on the fold.



CUTTING:

Note on cutting:

On the pattern pieces, "beam" means straight of grain. Lay out your pieces accordingly. Some pieces will be cut on the fold. This is noted on the pattern piece. Mark all notches and other design features such as pleats etc. from the pattern onto your fabric.

When sewing the garment, pay attention to notches, they must match up.

Main fabric:

1. Back - cut 2
2. Back side - cut 2
3. Right front - cut 1
4. Left front - cut 1
5. Front side - cut 2
6. Right center front facing — cut 1
7. Left center front facing — cut 1

8. Back neck facing - cut 2
9. Strap - cut 1
10. Sleeve - cut 2

Fusible interfacing:

1. Right center front facing — cut 1
2. Left center front facing — cut 1
3. Back neck facing - cut 2

Pattern blocks are drafted as seen from the right side, when cutting, please place them with the text and markings down onto the fabric!

INSTRUCTIONS:

1. Apply fusible interfacing to back neckline facing and center front facings.
2. Sew Side Back to Back along lower edge, press towards top and serge. Sew side backs to center back, press towards center and serge.
3. Serge center back edges separately on each piece. Sew center back seam from notch to bottom edge, press seam apart. Sew in zipper.
4. Sew side fronts to fronts, clipping into seam allowance near corner. Press towards center and serge.
5. Serge the center edge of left front, press onto wrong side and topstitch.
6. Sew shoulder seams, clip into curves, press apart and serge.
7. Sew back neckline facings to center front facings, clip into curves and press apart. Serge outer edges on right center front facing. Serge outer edge and corner up to notch.
8. Pin back neckline facing and center front facings to upper back right sides together and sew. On left front: back neckline and front neckline up to notch. Clip into seam allowance near the notch. On right front: back neckline, front neckline and center front edge. Clip seam allowances, turn facings under, press.
9. Put right front onto left front, matching center lines, and topstitch into the horizontal connecting seam on left side, fixing the left front in place.
10. Pin together strap in half lengthwise right sides together and sew longer edge and shorter edge. Turn the piece right side out, straighten, press.
11. Sew side seams, inserting into left side seam strap, press seams towards back and serge.

12. Sew sleeve seam, press towards back and serge. Sew sleeve into armhole, serge and press.
13. Serge hem of dress and hem of sleeve, press onto wrong side and topstitch or hem as desired.
14. Thread in strap and protruding part of right front into buckle and slipstitch.

TECHNICAL DRAWING:

