

Dress With Batwing Sleeve - Sewing Pattern #2350

Recommendations on fabric: natural/mixed fabric suitable for dresses in contrasting colors.

You will also need: fusible interfacing; 6 buttons.

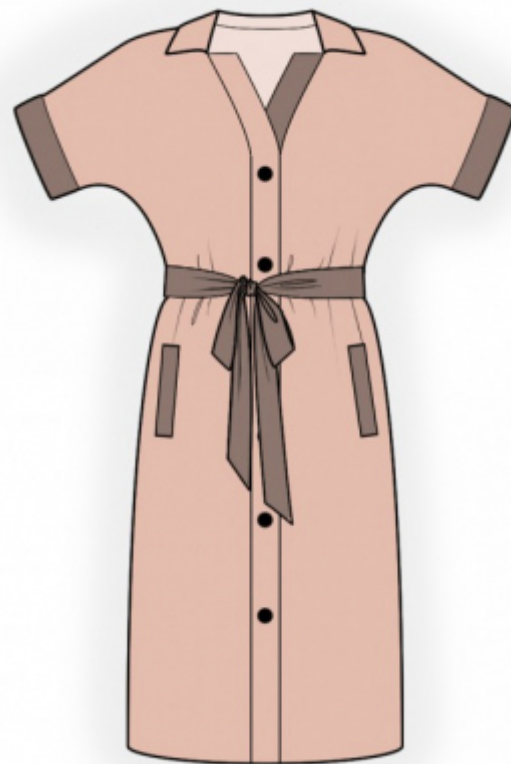
Seam allowances: all seams 1 cm. Seam allowance for hem of garment - 3 cm.

Note on seam allowances:

- If the pattern has double contour the seam allowances are included. They are 1 cm unless specified otherwise.
- If the pattern has single contour, the seam allowances are NOT included and need to be added when laying out the pattern.

Note on length of fabric:

Attention! The amount of fabric needed for your pattern is not included. It will depend on the selected pattern size, the width, and design of the fabric you plan to use. First, print all the paper patterns and lay them out at the width of fabric you plan to use (usually from 90 to 150 cm). Measure how much fabric you will need. Don't forget to account for pieces that need to be cut multiple times and pieces that are cut on the fold.



CUTTING:

Note on cutting:

On the pattern pieces, "beam" means straight of grain. Lay out your pieces accordingly. Some pieces will be cut on the fold. This is noted on the pattern piece. Mark all notches and other design features such as pleats etc. from the pattern onto your fabric.

When sewing the garment, pay attention to notches, they must match up.

Main fabric:

1. Back - cut 1 on fold
2. Front - cut 2
3. Placket right - cut 1
4. Collar - cut 2
5. Back neck facing - cut 1
6. Center front facing - cut 2
7. Large pocket bag - cut 2

8. Small pocket bag - cut 2

Main fabric 1:

1. Placket left - cut 1
2. Cuff - cut 2
3. Off-set welt - cut 2
4. Belt - cut 1

Fusible interfacing:

1. Placket right - cut 1
2. Placket left - cut 1
3. Collar - cut 1
4. Cuff - cut 2
5. Center front facing - cut 2
6. Back neck facing - cut 1

INSTRUCTIONS:

1. Apply fusible interfacing.
2. Mark the position of pocket on front. Press welt in half lengthwise wrong sides together. Topstitch small pocket bag onto inner side of welt. Sew welt to front along lower marked line of pocket. Sew large pocket bag to front along upper marked line of pocket. Stop stitching near short marking lines of the pocket. Slash through pocket opening. Snip diagonally toward end of stitching at 1-1.5 cm from end of pocket opening. Turn welt and large pocket bag onto wrong side through the resulting opening. Sew a double back stitch lines near corners to fix ends of pockets. Sew together edges of pocket bags, serge.
3. Fold placket in half lengthwise right sides together and sew shorter edges. Turn right side out placket onto right side, straighten, press. Sew placket to center front edge (at the bottom, the placket is shorter by the width of hem allowance).
4. Sew side and shoulder seams, press seams towards back and serge.
5. Pin collars together, right sides together, and sew collar ends and collar fall. Trim away corners, clip into curves. Turn the collar right side out, straighten and press. Sew into neckline.
6. Sew shoulder edges of center front facings and back neckline facing, press seam apart. Serge outer edge.
7. Place center front facing onto front right sides together and sew lower corner, center front facings and neckline. Trim away corners. Turn buttonstnds (center front edges) right side out onto right side, straighten seams.
8. Sew cuff into a ring, press seam apart. Fold cuff in half lengthwise and press right side out. Sew outer side of

cuff to sleeve, fold under the seam allowance of the inner side and stitch in the ditch.

9. Serge lower edge of garment, press onto wrong side and topstitch or hem as desired.

10. Make button holes on right placket, sew on the buttons on the left placket.

11. Fold belt in half lengthwise right sides together and sew, and leave an opening unsewn along the lower edge, so that you can turn out the piece later. Turn belt right side out, straighten and press. Topstitch belt around all edges at 0.1 cm from the edge.

TECHNICAL DRAWING:

