

## Blouse With Fly Piece - Sewing Pattern #2315

Recommendations on fabric: well draping natural/mixed fabrics suitable for blouses (silk, chiffon, atlas).

You will also need: 1 dress zipper.

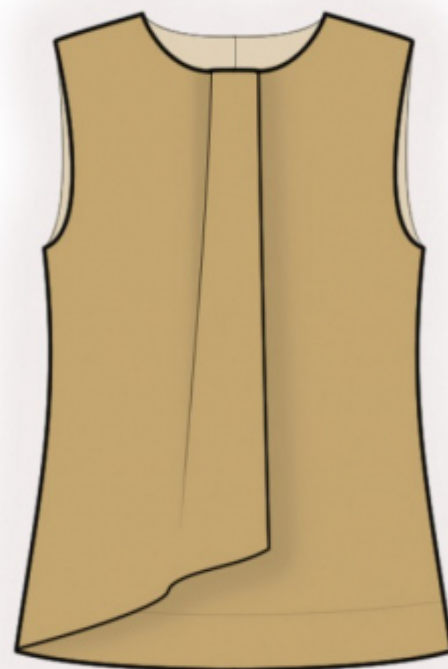
Seam allowances: all seams 1 cm. Seam allowance along the vertical edge of fly piece - 2 cm. Seam allowance along the hem of fly piece - 1.2 cm. Seam allowance along hem of lining - 0 cm. Seam allowance for hem of garment - 2 cm.

### Note on seam allowances:

- If the pattern has double contour the seam allowances are included. They are 1 cm unless specified otherwise.
- If the pattern has single contour, the seam allowances are NOT included and need to be added when laying out the pattern.

### Note on length of fabric:

Attention! The amount of fabric needed for your pattern is not included. It will depend on the selected pattern size, the width, and design of the fabric you plan to use. First, print all the paper patterns and lay them out at the width of fabric you plan to use (usually from 90 to 150 cm). Measure how much fabric you will need. Don't forget to account for pieces that need to be cut multiple times and pieces that are cut on the fold.



## CUTTING:

### Note on cutting:

On the pattern pieces, "beam" means straight of grain. Lay out your pieces accordingly. Some pieces will be cut on the fold. This is noted on the pattern piece. Mark all notches and other design features such as pleats etc. from the pattern onto your fabric.

When sewing the garment, pay attention to notches, they must match up.

Attention! Pattern blocks have markings and texts from the right side. Take this into account when cutting the fabric-some of the pattern blocks need to be laid onto fabric with their wrong side on top.

Main fabric:

1. Back - cut 2
2. Front - cut 1 on fold
3. Fly piece - cut 1

4. Back lining – cut 2
5. Front lining – cut 1 on fold

## **INSTRUCTIONS:**

1. Serge separately center back edges. Sew center edge from notch for zipper to bottom. Press seam apart. Sew in zipper.
2. Fold under the vertical edge of fly piece at 1 cm, then again at 1 cm and topstitch. Press the edge. Serge lower edge. Fold inside inside and topstitch. Make a box pleat on fly piece and baste along the neckline edge.
3. Pin fly piece onto front and baste together along the shoulder edge and the side edge. Sew shoulder seams, press seam apart. Sew side seams, press seams towards back and serge.
4. Serge center edges on lining of back separately. Sew center edge from notch for zipper to bottom. Press seam apart. Sew shoulder seams. Press seam apart. Sew side seams. Serge seams and press towards back. Serge lower edge.
5. Pin lining to the garment right sides together and sew the neckline. Clip seam allowances, fold lining towards wrong side and press. Sew armhole in two steps: first sew front armhole, then sew back armhole. Clip seam allowances and press.
6. Slipstitch lining to zipper tape.
7. Seam allowance for hem serge, press onto wrong side and topstitch.

## **TECHNICAL DRAWING:**

