

Sarafan With Pockets - Sewing Pattern #2311

Recommendations on fabric: natural/mixed fabric suitable for dresses, natural/mixed suiting fabrics.

You will also need: fusible interfacing; buckle; 2 buttons for jeans; elastic tape, its width should equal 1.5 cm.

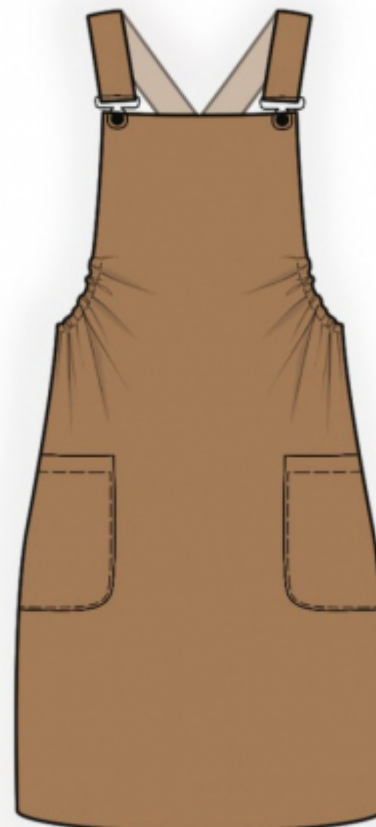
Seam allowances: all seams 1 cm. Front strap edge - 2 cm; Seam allowance along upper edge of pocket - 2 cm. Seam allowance for hem of garment - 2 cm.

Note on seam allowances:

- If the pattern has double contour the seam allowances are included. They are 1 cm unless specified otherwise.
- If the pattern has single contour, the seam allowances are NOT included and need to be added when laying out the pattern.

Note on length of fabric:

Attention! The amount of fabric needed for your pattern is not included. It will depend on the selected pattern size, the width, and design of the fabric you plan to use. First, print all the paper patterns and lay them out at the width of fabric you plan to use (usually from 90 to 150 cm). Measure how much fabric you will need. Don't forget to account for pieces that need to be cut multiple times and pieces that are cut on the fold.



CUTTING:

Note on cutting:

On the pattern pieces, "beam" means straight of grain. Lay out your pieces accordingly. Some pieces will be cut on the fold. This is noted on the pattern piece. Mark all notches and other design features such as pleats etc. from the pattern onto your fabric.

When sewing the garment, pay attention to notches, they must match up.

Main fabric:

1. Back - cut 2
2. Front - cut 1 on fold
3. Strap - cut 2
4. Front facing - cut 1 on fold
5. Back facing - cut 2
6. Pocket - cut 1

Fusible interfacing:

1. Front facing - cut 1 on fold
2. Back facing - cut 2
3. Strap - cut 2

INSTRUCTIONS:

1. Apply fusible interfacing.
2. Serge upper seam allowance of pocket, press onto wrong side and topstitch. Press side and lower seam allowances of pocket onto wrong side. Pin pocket onto front according to markings and topstitch.
3. Sew center back seam. Press seam apart.
4. Sew side seams. Serge and press apart.
5. Fold strap in half lengthwise right sides together and Sew along the front and the long edge. Trim seam allowances, turn right side out and press.
6. Sew center seam on back facings. Press seam apart. Sew side edges on front facings and back facings. Press seam apart. Serge lower edge facings.
7. Pin facings onto front and back, right sides together, insert straps and sew the upper edge. Trim seam allowances, trim corners and fold onto wrong side.
8. Between notches sew a stitch at 2 cm from the edge, making a casing. Thread elastic tape into casing and fasten it.

TECHNICAL DRAWING:

