

Sarafan - Sewing Pattern #2305

Recommendations on fabric: natural/mixed fabric suitable for dresses.

You will also need: fusible interfacing; lining; 2 buckles; 4 buttons.

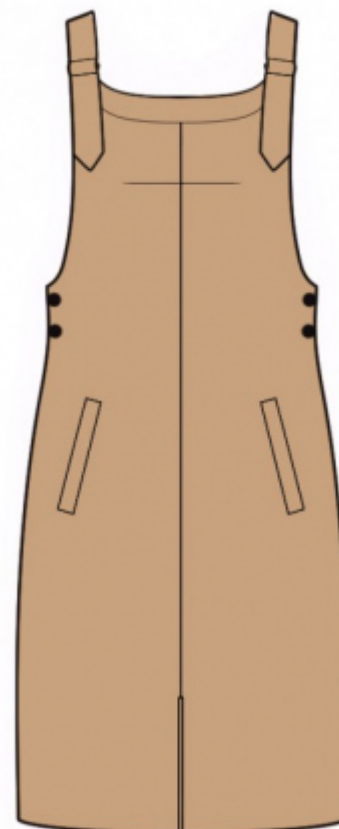
Seam allowances: seam allowance for hem of garment — 2 cm, other seams 1 cm.

Note on seam allowances:

- If the pattern has double contour the seam allowances are included. They are 1 cm unless specified otherwise.
- If the pattern has single contour, the seam allowances are NOT included and need to be added when laying out the pattern.

Note on length of fabric:

Attention! The amount of fabric needed for your pattern is not included. It will depend on the selected pattern size, the width, and design of the fabric you plan to use. First, print all the paper patterns and lay them out at the width of fabric you plan to use (usually from 90 to 150 cm). Measure how much fabric you will need. Don't forget to account for pieces that need to be cut multiple times and pieces that are cut on the fold.



CUTTING:

Note on cutting:

On the pattern pieces, "beam" means straight of grain. Lay out your pieces accordingly. Some pieces will be cut on the fold. This is noted on the pattern piece. Mark all notches and other design features such as pleats etc. from the pattern onto your fabric.

When sewing the garment, pay attention to notches, they must match up.

Main fabric:

1. Back - cut 2
2. Front — cut 2
3. Back neck facing — cut 4
4. Front neck facing — cut 2
5. Off-set welt - cut 2
6. Small pocket bag - cut 2
7. Large pocket bag - cut 2

8. Front closure facing - cut 2

Fusible interfacing:

1. Back neck facing — cut 2
2. Front neck facing — cut 1
3. Off-set welt
4. Front closure facing - cut 2

Lining:

1. Small pocket bag - cut 2
2. Large pocket bag - cut 2

INSTRUCTIONS:

1. Apply fusible interfacing. Apply fusible interfacing to the area near the mark for slit on front. Apply fusible interfacing to the area of buttonholes on front.
2. Mark the position of pocket. Press welt in half lengthwise wrong sides together. Topstitch small pocket bag onto inner side of welt. Sew welt to front along lower marked line of pocket. Sew large pocket bag to front along upper marked line of pocket. Stop stitching near short marking lines of the pocket. Slash through pocket opening. Snip diagonally toward end of stitching at 1-1.5 cm from end of pocket opening. Turn welt and large pocket bag onto wrong side through the resulting opening. Sew a double back stitch lines near corners to fix ends of pockets. Sew together edges of pocket bags.
3. Sew the bust dart on front, press bulk towards top. Serge the center edges of fronts separately. Sew the center edges from top down to the mark for slit. Press seam apart. Sew a decorative stitch along the slit at 0.1 cm.
4. Serge side edges on back. Serge the outer edge of the 1-piece closure facing. Fold facing onto wrong side and topstitch.
5. Clip into seam allowance near the mark for side closure. Serge side edges on front from mark for closure down to hem. Serge the outer edge and the lower edges of the front facing. Sew facing closure to front. Fold facing onto wrong side and press. Sew side edges from mark for closure down to hem. Press towards front.
6. Cut (or take ready) bias tape , its width should equal 4 cm and its length should equal the length of the front armhole + 4 cm. Fold bias tape in half lengthwise right side out and press. Pin bias tape to armhole edge from the right side and sew. Fold bias tape onto wrong side, clip into seam allowances and topstitch onto main piece along the seam. Press seam. Sew back armhole in the same way.
7. Pin outer facing onto front right sides together and sew. Press seam allowance towards facing. Pin inner facing to outer facing, right sides together, and sew the neckline and the part of 1-piece strap on the side of the

armhole. Clip seam allowances, turn right side out and press. Fold under the seam allowance of the inner facing and stitch-in-the-ditch along seam of outer facing. Serge the upper edge of the 1-piece front strap. Thread in buckle into strap and sew the end with machine stitch.

8. Sew center back seam. Serge seam and press towards left. Sew the center edges of back facings. Press seam apart.

9. Pin outer facing onto back right sides together and sew. Press seam allowance towards facing. Pin inner facing to outer facing, right sides together, and sew the back neckline and the 1-piece strap. Clip seam allowances, trim away corners, turn right side out and press. Fold under the seam allowance of the inner facing and stitch-in-the-ditch along seam of outer facing.

10. Serge lower edge of garment, press onto wrong side and topstitch.

11. Make buttonholes on front. Sew on buttons onto back. Thread strap into buckle and sew the end.

TECHNICAL DRAWING:

