

## Dress With Boat Neckline - Sewing Pattern #2279

Recommendations on fabric: natural/mixed fabric suitable for dresses.

You will also need: fusible interfacing, dress zipper.

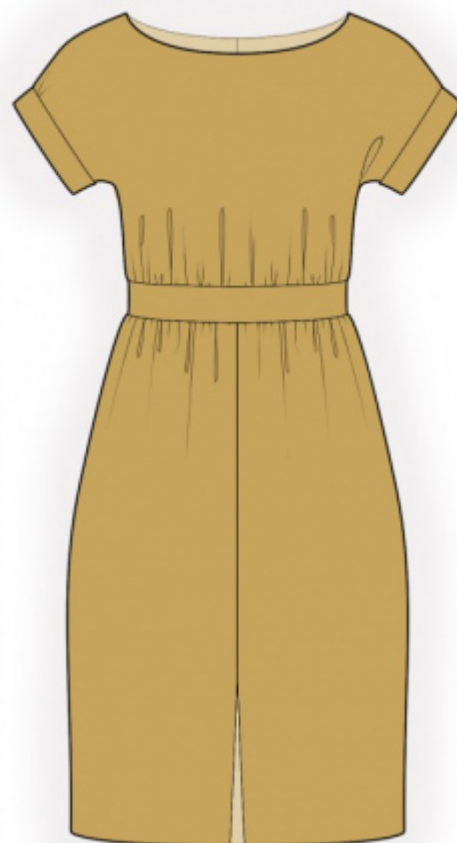
Seam allowances: all seams 1 cm. Seam allowance along hem of garment - 2.0 cm.

### Note on seam allowances:

- If the pattern has double contour the seam allowances are included. They are 1 cm unless specified otherwise.
- If the pattern has single contour, the seam allowances are NOT included and need to be added when laying out the pattern.

### Note on length of fabric:

*Attention! The amount of fabric needed for your pattern is not included. It will depend on the selected pattern size, the width, and design of the fabric you plan to use. First, print all the paper patterns and lay them out at the width of fabric you plan to use (usually from 90 to 150 cm). Measure how much fabric you will need. Don't forget to account for pieces that need to be cut multiple times and pieces that are cut on the fold.*



## CUTTING:

### Note on cutting:

*On the pattern pieces, "beam" means straight of grain. Lay out your pieces accordingly. Some pieces will be cut on the fold. This is noted on the pattern piece. Mark all notches and other design features such as pleats etc. from the pattern onto your fabric.*

*When sewing the garment, pay attention to notches, they must match up.*

Main fabric:

1. Upper back - cut 2
2. Back belt - cut 2
3. Lower back - cut 2
4. Lower front - cut 2
5. Front belt - cut 1 on fold
6. Upper front - cut 1 on fold
7. Cuff - cut 2

8. Front neck facing - cut 1
9. Back neck facing - cut 2

Fusible interfacing:

1. Front neck facing - cut 1
2. Back neck facing - cut 2
3. Cuff - cut 2

## **INSTRUCTIONS:**

1. Apply fusible interfacing. Also apply fusible interfacing to the slit area on lower front.
2. Sew a gathering stitch along the lower edge of upper back and gather fullness. Sew back belt to upper back, press seam allowances towards belt and serge. Sew a gathering stitch along the upper edge of lower back and gather fullness. Sew lower back to belt, serge and press towards belt.
3. Serge center back edges separately. Sew center seam from top to mark zippers. Press seam apart. Sew in zipper.
4. Serge center edges of lower front separately. Sew from top up to notch for slit. Press seam apart. Sew a fixing stitch at 0.2 cm along the slit.
5. Sew a gathering stitch along the lower edge of upper front and gather fullness. Sew front belt to upper front, press seam allowances towards belt and serge. Sew a gathering stitch along the upper edge of lower front and gather fullness. Sew lower front to belt, serge and press towards belt.
6. Sew side and shoulder seams, processing the sleeve seam at the same time, press seams towards back and serge.
7. Sew shoulder seams of neckline facings. Press seam apart. Serge outer edge of facings. Pin facing onto right side of dress and sew neckline. Clip seam allowances, fold facings onto wrong side and press. Slipstitch facings to shoulder seams and to zipper tape.
8. Sew cuff into a ring, press seam apart. Fold cuff in half lengthwise right side out and press. Sew outer side of cuff to sleeve, turn under the seam allowance of the inner cuff and stitch-in-the-ditch into the seam of the upper cuff.
9. Serge lower edge of garment, press onto wrong side at 2 cm. and topstitch.

**TECHNICAL DRAWING:**

