

Dress With Notched Collar - Sewing Pattern #2170

Recommendations on fabric: natural/mixed fabric suitable for dresses. Contrasting fabric for decoration.

You will also need: dress zipper; fusible interfacing; 3 buttons.

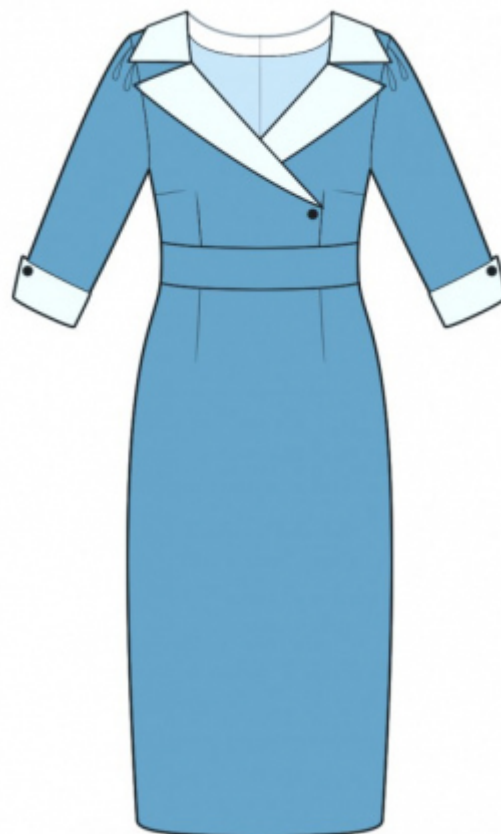
Seam allowances: all seams 1 cm. Seam allowance along hem of garment - 2.5 cm, seam allowance along vent - 6 cm.

Note on seam allowances:

- If the pattern has double contour the seam allowances are included. They are 1 cm unless specified otherwise.
- If the pattern has single contour, the seam allowances are NOT included and need to be added when laying out the pattern.

Note on length of fabric:

Attention! The amount of fabric needed for your pattern is not included. It will depend on the selected pattern size, the width, and design of the fabric you plan to use. First, print all the paper patterns and lay them out at the width of fabric you plan to use (usually from 90 to 150 cm). Measure how much fabric you will need. Don't forget to account for pieces that need to be cut multiple times and pieces that are cut on the fold.



CUTTING:

Note on cutting:

On the pattern pieces, "beam" means straight of grain. Lay out your pieces accordingly. Some pieces will be cut on the fold. This is noted on the pattern piece. Mark all notches and other design features such as pleats etc. from the pattern onto your fabric.

When sewing the garment, pay attention to notches, they must match up.

Main fabric:

1. Back - cut 2
2. Lower front - cut 1 on fold
3. Front belt - cut 1
4. Upper front - cut 2
5. Sleeve - cut 2
6. Center front facing - cut 2
7. Back neck facing - cut 2

Decorative fabric:

1. Lapel - cut 4
2. Collar - cut 4
3. Cuff - cut 2

Fusible interfacing:

1. Center front facing - cut 2
2. Back neck facing - cut 2
3. Lapel - cut 2
4. Collar - cut 2
5. Cuff - cut 2

INSTRUCTIONS:

1. Apply fusible interfacing.
2. Sew darts on back and front, press the bulk of waist darts towards center, press the bulk of bust darts towards top.
3. Trim away 5 cm along vertical edge of vent on left back. Apply fusible interfacing to vent area on backs from the wrong side. Mark center seam line (vent fold-line) from the right side. Press left part along vent fold, on the right side press onto wrong side only the seam allowance of right side of vent (6 cm). Align pieces along center seam and baste together along upper edge of vent. Serge center back edges separately. Serge seam allowances of vent. Sew center back seam from zipper marker down to vent corner. Clip into seam allowance of vent in corner on right part. Press apart center seam, press seam allowances of the vent and sew them together by machine. Sew in zipper.
4. Pin lapels together right sides together and sew outer edge. Clip into curves, trim away corner, turn the piece right side out and press.
5. Pin together collars right sides together and sew along ends, collar fall and center edge. Clip into curves, trim away corners, turn the piece right side out and press.
6. Sew shoulder seams, press seams towards back and serge.
7. Sew collars and lapels into the neckline edge, press seam.
8. Sew shoulder edges of centre front facings with shoulder edges of back neckline facing, press seam apart. Serge outer edge. Pin button stand (center front facing) to front right sides together (collars and lapels are placed in between them) and sew neckline edge and centre front edge. Fold the centre front facing and the neckline facing onto the wrong side, straighten, press. Slipstitch to shoulder seams and to zipper tape. Put right front onto left front and baste the pieces together along lower edge.

9. Sew front belt to upper front, press seam allowances towards belt and serge. Sew lower front to front belt, press seam allowances towards belt and serge.
10. Sew side seams, press seams towards back and serge.
11. Sew sleeve seams, press seams towards back and serge. Make and baste pleases on the sleeve cap (the bulk is directed towards cap centre). Sew sleeves into armholes, serge and press.
12. Fold cuff in half lengthwise, right sides together and sew ends from fold to notch. Trim away corners, clip into seam allowance near notch. Fold cuff into ring and sew the areas from marking up to the lower edge. Turn cuff right side out, straighten, press. Pin cuff onto wrong side of sleeve, matching the seam on cuff with the marking on sleeve, and sew. Serge and press. Fold cuff to right side.
13. Serge lower edge of garment, press onto wrong side and topstitch.
14. Sew on button on front, fixing the right part. Sew on buttons to the sleeve cuffs, matching notches.

TECHNICAL DRAWING:

