

Halter Dress With Notched Collar - Sewing Pattern #2161

Recommendations on fabric: natural/mixed fabric suitable for dresses.

You will also need: fusible interfacing; dress zipper.

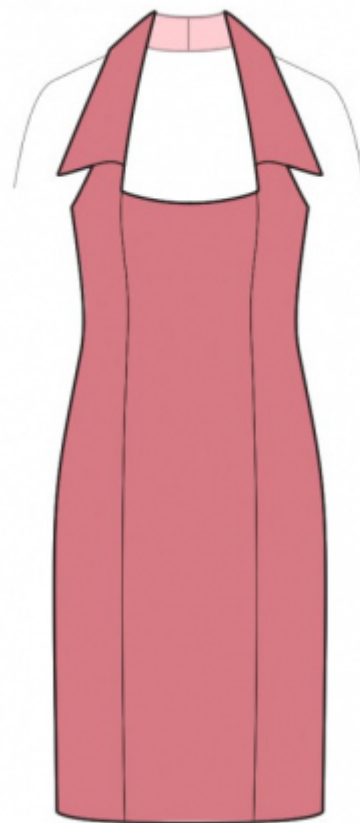
Seam allowances: seam allowance for hem 2 cm, seam allowance along vent – 5 cm; other seams 1 cm.

Note on seam allowances:

- If the pattern has double contour the seam allowances are included. They are 1 cm unless specified otherwise.
- If the pattern has single contour, the seam allowances are NOT included and need to be added when laying out the pattern.

Note on length of fabric:

Attention! The amount of fabric needed for your pattern is not included. It will depend on the selected pattern size, the width, and design of the fabric you plan to use. First, print all the paper patterns and lay them out at the width of fabric you plan to use (usually from 90 to 150 cm). Measure how much fabric you will need. Don't forget to account for pieces that need to be cut multiple times and pieces that are cut on the fold.



CUTTING:

Note on cutting:

On the pattern pieces, "beam" means straight of grain. Lay out your pieces accordingly. Some pieces will be cut on the fold. This is noted on the pattern piece. Mark all notches and other design features such as pleats etc. from the pattern onto your fabric.

When sewing the garment, pay attention to notches, they must match up.

Main fabric:

1. Center back – cut 2
2. Side back – cut 2
3. Center front – cut 1
4. Side front – cut 2
5. Center front facing – cut 1
6. Side front facing – cut 2
7. Back facing – cut 2

Fusible interfacing:

1. Back facing – cut 2
2. Center front facing – cut 1
3. Side front facing – cut 2

INSTRUCTIONS:

1. Apply fusible interfacing to the back facing, center front facing and side front facing.
2. Cut away 5 cm along vertical edge of vent on lower left back. Apply fusible interfacing to the vent area on both lower backs, from the wrong side. Mark center seam line (vent fold-line) from the right side. Press left part along vent fold, on the right side press onto wrong side only the seam allowance of right side of vent (6 cm). Align pieces along center seam and baste together along upper edge of vent. Serge center back edges separately. Serge seam allowances of vent. Sew center back seam from zipper marker down to vent corner. Clip into seam allowance of vent in corner on right part. Press apart center seam, press seam allowances of the vent and sew them together by machine. Sew in zipper.
3. Sew side backs to center back. Serge seams and press towards center.
4. Serge lower edge of front neck facing. Pin center front facing onto front and sew upper edge. Clip seam allowances, fold facing onto wrong side and press.
5. Sew side front facings together along the center collar seam. Press seam apart. Sew side fronts together along the center collar seam. Press seams apart. Serge the lower edge of the side front facing.
6. Pin the facing to the side front, right sides together. Sew the collar fall, the collar corners and then sew the facing to the princess seam of the front, inserting the center front in between the side front and the facing. Clip into the seam allowance in the corner. Serge the seam from the corner down to hem and press towards the side part. Turn the collar right side out and press.
7. Serge the lower edge of the back facing. Pin back facing onto back right sides together and sew upper edge. Start and stop stitching exactly at the marked line of the side seam.
8. Fold under the seam allowances along the armhole and along the collar, and press. Topstitch the pieces one onto another, placing the stitch line at 0.2 cm from the edge.
9. Sew side seams, inserting the front between the back and the facing. Serge seams and press towards back.
10. Serge lower edge of dress, turn inside and topstitch.

TECHNICAL DRAWING:

