

## Free Dress Pattern - Sewing Pattern #4157

Recommendations on fabric: natural/mixed fabric suitable for dresses.

You will also need: dress zipper, fusible interfacing.

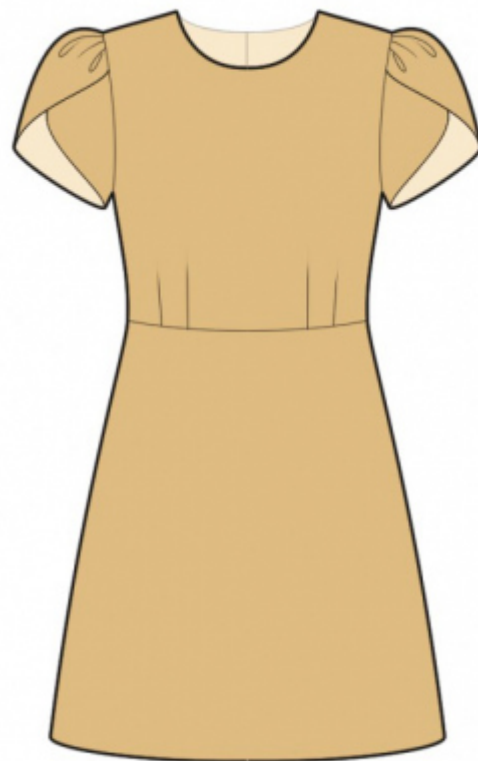
Seam allowances: all seams 1 cm. Seam allowance for hem of garment - 3 cm. Seam allowance on lower edge of sleeve - 1.2 cm.

### Note on seam allowances:

- If the pattern has double contour the seam allowances are included. They are 1 cm unless specified otherwise.
- If the pattern has single contour, the seam allowances are NOT included and need to be added when laying out the pattern.

### Note on length of fabric:

*Attention! The amount of fabric needed for your pattern is not included. It will depend on the selected pattern size, the width, and design of the fabric you plan to use. First, print all the paper patterns and lay them out at the width of fabric you plan to use (usually from 90 to 150 cm). Measure how much fabric you will need. Don't forget to account for pieces that need to be cut multiple times and pieces that are cut on the fold.*



## CUTTING:

### Note on cutting:

*On the pattern pieces, "beam" means straight of grain. Lay out your pieces accordingly. Some pieces will be cut on the fold. This is noted on the pattern piece. Mark all notches and other design features such as pleats etc. from the pattern onto your fabric.*

*When sewing the garment, pay attention to notches, they must match up.*

Main fabric:

1. Upper back - cut 2
2. Lower back - cut 2
3. Upper front - cut 1 on fold
4. Lower front - cut 1 on fold
5. Back neck facing - cut 2
6. Front neck facing - cut 1
7. Back sleeve - cut 2

8. Front sleeve – cut 2

Fusible interfacing:

1. Back neck facing – cut 2
2. Front neck facing – cut 1

## **INSTRUCTIONS:**

1. Apply fusible interfacing.
2. Sew waist darts on upper front, press bulk towards center front. Sew darts on upper back, press depths towards center back.
3. Sew lower back to upper back, press seam allowances towards top and serge. Sew lower front to upper front, press seam allowances towards top and serge.
4. Serge separately center back edges. Sew center back seam from notch down to hem, press seam apart, pressing the seam allowances for closure. Sew in zipper.
5. Sew side and shoulder seams. Press seams towards back and serge.
6. Sew shoulder seam on front neckline facing and back neckline facing, press seams apart. Serge outer edges. Pin facing onto dress right sides together and sew the neckline, adjusting ease on the neckline of the dress. Fold facing onto the wrong side and press. Slipstitch the center edge of the facing to zipper tape. Slipstitch the seam allowances of the shoulder seams of the facing to the shoulder seam of the dress.
7. Sew sleeve seam, serge and press. Serge lower edge of sleeve, press onto wrong side and topstitch. Sew a gathering stitch along the upper edge of the sleeve. Pin back sleeve onto front sleeve and baste together along upper edge.
8. Sew sleeves into armholes, serge and press.
9. Press lower edge of garment onto wrong side, turn inside and topstitch.

## **TECHNICAL DRAWING:**

