

Y1950003 Dress With Petal Skirt

Recommended fabrics: well draping natural/mixed fabrics suitable for dresses in matching colors. You may also use the same fabric for the whole pattern.

You will also need: fusible interfacing, buttons.

Seam allowances: all seams 3/8 inch, shoulder, side and center back seams - 5/8 inch, outer edge of facings - 0 inch, hem of dress - 1 inch.

Note on seam allowances:

- If the pattern has double contour the seam allowances are included.

- If the pattern has single contour, the seam allowances are NOT included and need to be added when laying out the pattern.

Note on length of fabric:

Attention! The amount of fabric needed for your pattern is not included. It will depend on the selected pattern size, the width, and design of the fabric you plan to use. You are welcome to use the Online Fabric Estimator to make calculations. Alternatively, print all the paper patterns and lay them out at the width of fabric you plan to use (usually from 90 to 150 cm). Measure how much fabric you will need. Don't forget to account for pieces that need to be cut multiple times and pieces that are cut on the fold.



PRINTING:

Please use Adobe Reader software to open your PDF pattern. You can get Adobe Reader free of charge at this link - <https://get.adobe.com/reader/>.

Make sure you print your patterns at actual size (100% scale or None) and on single sides of plain A4 paper. Verify that the print out size is to the correct scale by measuring the test square on the first page. The upper edge of the square features a centimeter scale, and the bottom edge features an inch scale.

Trim top and/or right margin of the pages where you see the scissors symbols. In the center of each page, the number of row and column is printed, separated by / sign. Construct layout pages according to these marks (for example, page marked 2/3 is in the second row and in the third column). Align pages using margins and tape or glue together.

CUTTING:

Note on cutting:

Lay out your pieces according to straight of grain as marked on the pattern pieces.

Some pieces will be cut on the fold, the corresponding edge will then be marked with a fold mark. Kindly pay attention to notes regarding type of fabric and quantity of required pieces on a block. For example, [Main, Interfacing - cut 1+1] on a pattern piece means that you need to cut 1 piece as is and 1 mirrored piece from the main fabric as well as from interfacing.

Make sure to mark all notches and other design features such as pleats etc. from the pattern piece onto your fabric. When sewing the garment, pay attention to notches, they must match up.

Self 1

- (A) Side Front Bodice - cut 1 +1
- (C) Center Front Bodice - cut 1 +1
- (E) Center Back Bodice - cut 1 +1
- (G) Side Back Bodice - cut 1 +1
- (I) Front Facing - cut 1 +1
- (J) Back Facing - cut 1 +1

Self 2

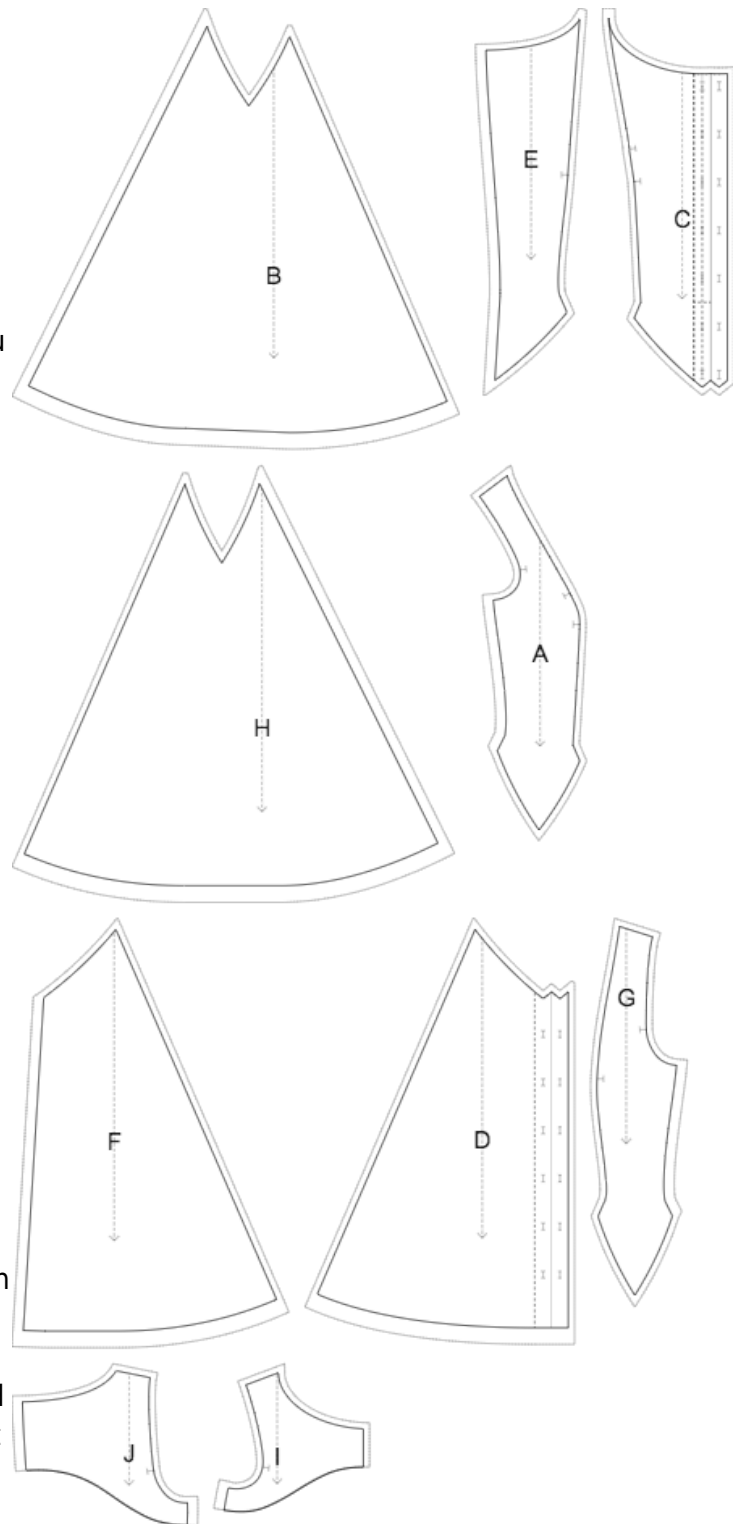
- (B) Side Front Skirt - cut 1 +1
- (D) Center Front Skirt - cut 1 +1
- (F) Center Back Bodice - cut 1 +1
- (H) Side Back Skirt - cut 1 +1

Interfacing

- (I) Front Facing - cut 1 +1
- (J) Back Facing - cut 1 +1

ATTENTION - The pattern is drafted with one-piece button placket along center front, so that you can use standard buttons and make buttonholes with your sewing machine. If you plan to use a ready loop buttonhole band on the bodice, you may want to cut an additional placket to use as a facing for center front.

* The capital letters in brackets correspond to pattern blocks as seen in Online Fabric Estimator and in pattern blocks preview on the right.



INSTRUCTIONS:

- Apply fusible interfacing according to the Cutting instructions.

- Sew Side Back Skirts to Side Back Bodices pairwise. Trim corner, clip into curves. Serge and press towards bodice. Treat as one piece (Side Back) in the future.
- Sew Center Back Skirts to Center Back Bodices pairwise. Trim corner, clip into curves. Serge and press towards bodice. Treat as one piece (Center Back) in the future.
- Sew Side Backs to Center Backs. Clip into the seam allowance along the curve. Serge the seams and press towards the center. Treat as one piece (Backs) in the future.
- Serge center back edges separately. Sew and press apart.
- Sew Side Front Skirts to Side Front Bodices pairwise. Trim corner, clip into curves. Serge and press towards bodice. Treat as one piece (Side Front) in the future.
- Sew Center Front Skirts to Center Front Bodices pairwise. Trim corner, clip into curves. Serge and press towards bodice. Treat as one piece (Center Front) in the future.
- Sew Side Fronts to Center Fronts. Clip into the seam allowance along the curve. Serge the seams and press towards the center. Treat as one piece (Fronts) in the future.
- Sew shoulder seams. Serge and press towards back.
- Serge center edges of front and the outer edge of facings.
- Sew shoulder seams of neckline facings. Press seam apart and serge. Serge outer edge of facings. Pin facing onto Shell right sides together, adjusting neckline edges. Fold the facing and pin it to upper edge of garment. Sew the neckline exactly up to the marked line of one-piece button placket. Clip into curves, turn pieces right side out and press. Sew upper and lower corners of one-piece plackets. Turn onto the right side, press. Slip stitch facing to seam allowances of shoulder seam on Shell and to the edge of one-piece button placket.
- Pin facing onto Shell right sides together, adjusting armhole edges and matching markings. Sew the armholes.
- Sew side seams continuously on Shell and Facing. Serge and press towards back. Slipstitch facing to seam allowances of side seams.
- Serge hem, turn under, press and topstitch or slip stitch as desired.
- Make buttonholes on the right front and sew on buttons on the left front.

TECHNICAL DRAWING:

