

Y1920009 Late 1920S Dress

Recommended fabrics: well draping natural/mixed fabrics suitable for dresses.

You will also need: fusible interfacing, dress zipper.

Seam allowances: all seams 3/8 inch, shoulder, side and center back seams - 5/8 inch, outer edge of facings - 0 inch, hem of dress - 1 inch.

Note on seam allowances:

- If the pattern has double contour the seam allowances are included.

- If the pattern has single contour, the seam allowances are NOT included and need to be added when laying out the pattern.

Note on length of fabric:

Attention! The amount of fabric needed for your pattern is not included. It will depend on the selected pattern size, the width, and design of the fabric you plan to use. You are welcome to use the Online Fabric Estimator to make calculations. Alternatively, print all the paper patterns and lay them out at the width of fabric you plan to use (usually from 90 to 150 cm). Measure how much fabric you will need. Don't forget to account for pieces that need to be cut multiple times and pieces that are cut on the fold.



PRINTING:

Please use Adobe Reader software to open your PDF pattern. You can get Adobe Reader free of charge at this link - <https://get.adobe.com/reader/>.

Make sure you print your patterns at actual size (100%% scale or None) and on single sides of plain A4 paper. Verify that the print out size is to the correct scale by measuring the test square on the first page. The upper edge of the square features a centimeter scale, and the bottom edge features an inch scale.

Trim top and/or right margin of the pages where you see the scissors symbols. In the center of each page, the number of row and column is printed, separated by / sign. Construct layout pages according to these marks (for example, page marked 2/3 is in the second row and in the third column). Align pages using margins and tape or glue together.

CUTTING:

Note on cutting:

Lay out your pieces according to straight of grain as marked on the pattern pieces.

Some pieces will be cut on the fold, the corresponding edge will then be marked with a fold mark. Kindly pay attention to notes regarding type of fabric and quantity of required pieces on a block. For example, [Main, Interfacing - cut 1+1] on a pattern piece means that you need to cut 1 piece as is and 1 mirrored piece from the main fabric as well as from interfacing.

Make sure to mark all notches and other design features such as pleats etc. from the pattern piece onto your fabric. When sewing the garment, pay attention to notches, they must match up.

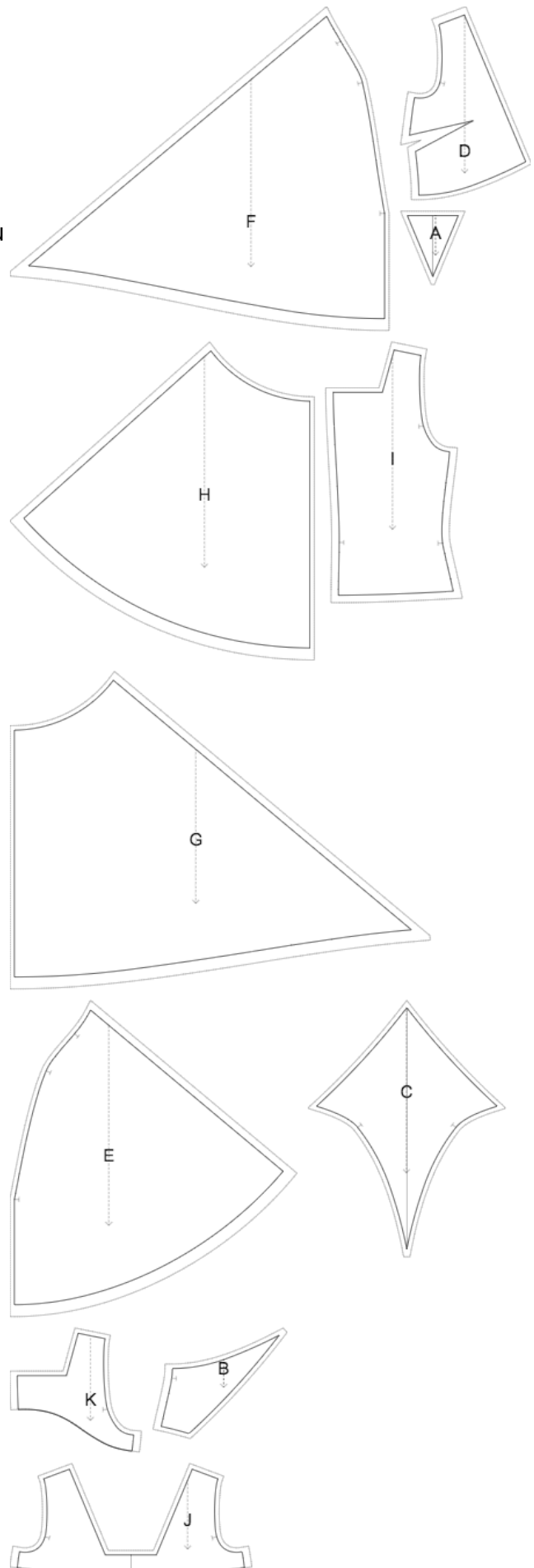
Self

- (A) Center Front Inset - cut 1
- (B) Side Front Inset - cut 1 +1
- (C) Middle Front Inset - cut 1
- (D) Side Front - cut 1 +1
- (E) Front Left Flounce - cut 1
- (F) Front Right Flounce - cut 1
- (G) Back Right Flounce - cut 1
- (H) Back Left Flounce - cut 1
- (I) Back - cut 1 +1
- (J) Front Facing - cut 1
- (K) Back Facing - cut 1 +1

Interfacing

- (J) Front Facing - cut 1
- (K) Back Facing - cut 1 +1

* The capital letters in brackets correspond to pattern blocks as seen in Online Fabric Estimator and in pattern blocks preview on the right.



INSTRUCTIONS:

- Sew darts on Side Front pieces. Cut bulk off of 1 cm, if desired, and press towards top.
- Sew Center Front Inset to Side Fronts, trim corner, serge and press towards center.
- Sew Middle Front Inset to Side Front Insets, trim corner and press towards center.
- Sew Side Front Insets to the main piece. Serge and press towards top.
- Serge separately the center seams of Front Flounces. Sew Front Flounces to main Front piece, clip into curves, serge and press towards top. Sew center seam and press apart.
- Sew Right Back Flounce to Right Back. Sew Left Back Flounce to Left Back. Clip into curves, serge and press towards top.
- Sew shoulder seams. Serge and press towards back.
- Sew shoulder seams of neckline facings. Press seam apart and serge. Serge outer edge of facings. Pin facing onto Shell along the neckline, right sides together, adjusting neckline edges. Sew the neckline. Clip into curves, turn pieces right side out and press. Slip stitch facing to seam allowances of shoulder seam
- Pin facing onto Shell along the armhole, right sides together, adjusting armhole edges and matching markings. Sew the armhole in two steps - first the front, and then the back. Clip into curves, turn pieces right side out and press. Slipstitch facing to side seams and to zipper tape.
- Serge separately center seams on left back and on right back, and on facings. Sew center seam continuously on Shell and on facing and press apart.
- Serge right side edges separately. Sew in dress zipper in the right side seam, preferably using invisible zipper foot. Sew right side seam AFTER you have installed the zipper, stitch as closely as you can to the end of the zipper. Slipstitch the opening and press.
- Sew left side seam and left facing seam continuously. Serge and press towards back.
- Slipstitch seam allowances of right side facing to right side seam allowances and zipper tape.
- Serge hem, turn under, press and topstitch or slip stitch as desired.

TECHNICAL DRAWING:

