

Y1920011 Late 1920S Dress

Recommended fabrics: natural/mixed fabrics suitable for dresses.

You will also need: fusible interfacing, dress zipper, a button or a brooch.

Seam allowances: all seams 3/8 inch, shoulder, side and center back seams - 5/8 inch, outer edge of facings - 0 inch, hem of dress - 1 inch, hem of sleeve - 5/8 inch.

Note on seam allowances:

- If the pattern has double contour the seam allowances are included.

- If the pattern has single contour, the seam allowances are NOT included and need to be added when laying out the pattern.

Note on length of fabric:

Attention! The amount of fabric needed for your pattern is not included. It will depend on the selected pattern size, the width, and design of the fabric you plan to use. You are welcome to use the Online Fabric Estimator to make calculations. Alternatively, print all the paper patterns and lay them out at the width of fabric you plan to use (usually from 90 to 150 cm). Measure how much fabric you will need. Don't forget to account for pieces that need to be cut multiple times and pieces that are cut on the fold.



PRINTING:

Please use Adobe Reader software to open your PDF pattern. You can get Adobe Reader free of charge at this link - <https://get.adobe.com/reader/>.

Make sure you print your patterns at actual size (100%% scale or None) and on single sides of plain A4 paper. Verify that the print out size is to the correct scale by measuring the test square on the first page. The upper edge of the square features a centimeter scale, and the bottom edge features an inch scale.

Trim top and/or right margin of the pages where you see the scissors symbols. In the center of each page, the number of row and column is printed, separated by / sign. Construct layout pages according to these marks (for example, page marked 2/3 is in the second row and in the third column). Align pages using margins and tape or glue together.

CUTTING:

Note on cutting:

Lay out your pieces according to straight of grain as marked on the pattern pieces.

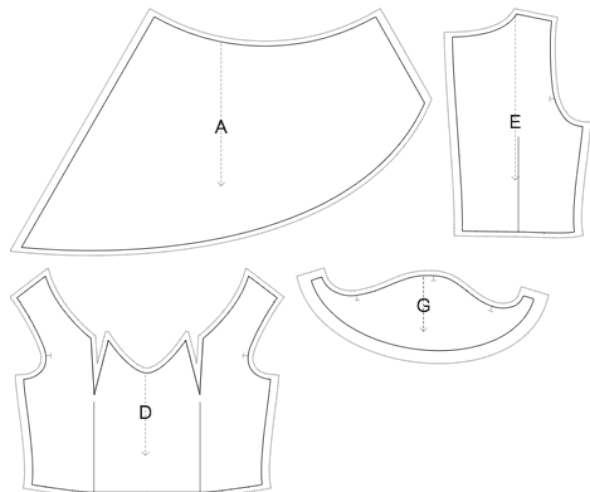
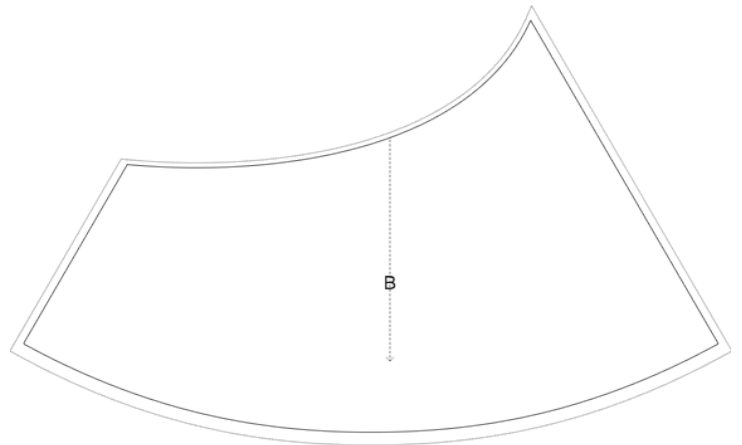
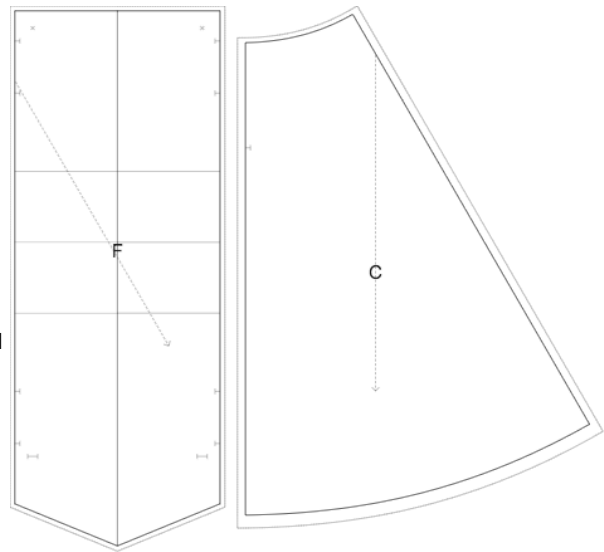
Some pieces will be cut on the fold, the corresponding edge will then be marked with a fold mark. Kindly pay attention to notes regarding type of fabric and quantity of required pieces on a block. For example, [Main, Interfacing - cut 1+1] on a pattern piece means that you need to cut 1 piece as is and 1 mirrored piece from the main fabric as well as from interfacing.

Make sure to mark all notches and other design features such as pleats etc. from the pattern piece onto your fabric. When sewing the garment, pay attention to notches, they must match up.

Self

- (A) Upper Front Skirt - cut 1
- (B) Lower Front Skirt - cut 1
- (C) Back Skirt - cut 1 +1
- (D) Front - cut 1
- (E) Back - cut 1 +1
- (F) Scarf Collar - cut 1
- (G) Flared Sleeve - cut 1 +1

* The capital letters in brackets correspond to pattern blocks as seen in Online Fabric Estimator and in pattern blocks preview on the right.



INSTRUCTIONS:

- Sew darts on Front pieces. Cut bulk off of 1 cm, if desired, and press towards center.
- Sew Lower Front Skirt to Upper Front Skirt. Clip into curves, serge and press towards top.

- Sew Front Bodice to Front Skirt. Serge and press towards top. Treat as one Front piece in the future.
 - Sew Back Bodices to Back Skirts pairwise. Serge and press towards top. Treat as whole Back pieces in the future.
 - Serge center back edges separately. Sew center back seam and press apart.
 - Sew shoulder seams. Serge and press towards back.
 - Sew sleeves into armholes matching notches and gathering ease on cap. Serge and press towards sleeve.
 - Serge right side edges separately. Sew in dress zipper in the right side seam, preferably using invisible zipper foot. Sew right sleeve seam and right side seam AFTER you have installed the zipper, stitch as closely as you can to the end of the zipper. Slipstitch the opening and press.
 - Sew left side seam and left sleeve seam continuously. Serge and press towards back.
 - Pin right side of scarf collar to the wrong side of neckline matching notches. Sew. Serge, press towards collar. Fold scarf in half lengthwise and sew shorter edges and the sections between center front seam and the corners of the scarf collar. Serge, turn right side out and press. Turn the raw edge of the longer side of the collar under, pin along the neckline and stitch in the ditch from the wrong side.
- You may use a brooch or a button for the collar. If you are using a button, arrange the collar, making more pleats on the right side, and sew a button below the neckline corner, fixing the right side of the collar in place. Check the position of the button hole on the left side. Make buttonhole and button up.
- Serge lower edge of sleeves. Turn under, press and topstitch or slip stitch as desired.
 - Serge hem, turn under, press and topstitch or slip stitch as desired.

TECHNICAL DRAWING:

