

Y1920007 1920S Shift Dress With Flounces

Recommended fabrics: well draping natural/mixed fabrics suitable for dresses.

You will also need: fusible interfacing, dress zipper.

Seam allowances: all seams 3/8 inch, shoulder, side and center back seams - 5/8 inch, outer edge of facings - 0 inch, hem of dress - 1 inch, hem of sleeve - 5/8 inch.

Note on seam allowances:

- If the pattern has double contour the seam allowances are included.

- If the pattern has single contour, the seam allowances are NOT included and need to be added when laying out the pattern.

Note on length of fabric:

Attention! The amount of fabric needed for your pattern is not included. It will depend on the selected pattern size, the width, and design of the fabric you plan to use. You are welcome to use the Online Fabric Estimator to make calculations. Alternatively, print all the paper patterns and lay them out at the width of fabric you plan to use (usually from 90 to 150 cm). Measure how much fabric you will need. Don't forget to account for pieces that need to be cut multiple times and pieces that are cut on the fold.



PRINTING:

Please use Adobe Reader software to open your PDF pattern. You can get Adobe Reader free of charge at this link - <https://get.adobe.com/reader/>.

Make sure you print your patterns at actual size (100%% scale or None) and on single sides of plain A4 paper. Verify that the print out size is to the correct scale by measuring the test square on the first page. The upper edge of the square features a centimeter scale, and the bottom edge features an inch scale.

Trim top and/or right margin of the pages where you see the scissors symbols. In the center of each page, the number of row and column is printed, separated by / sign. Construct layout pages according to these marks (for example, page marked 2/3 is in the second row and in the third column). Align pages using margins and tape or glue together.

CUTTING:

Note on cutting:

Lay out your pieces according to straight of grain as marked on the pattern pieces.

Some pieces will be cut on the fold, the corresponding edge will then be marked with a fold mark. Kindly pay attention to notes regarding type of fabric and quantity of required pieces on a block. For example, [Main, Interfacing - cut 1+1] on a pattern piece means that you need to cut 1 piece as is and 1 mirrored piece from the main fabric as well as from interfacing.

Make sure to mark all notches and other design features such as pleats etc. from the pattern piece onto your fabric. When sewing the garment, pay attention to notches, they must match up.

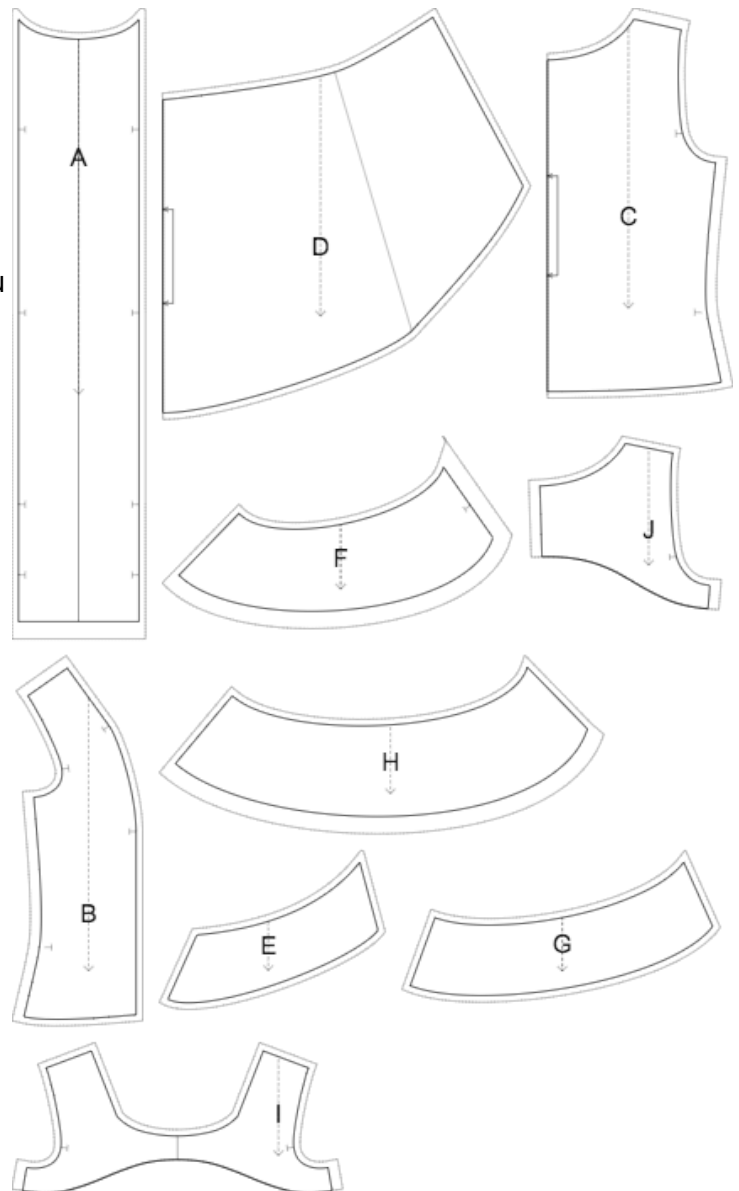
Self

- (A) Center Front Panel - cut 1
- (B) Side Front - cut 1 +1
- (C) Back - cut 1 on fold
- (D) Middle Skirt - cut 1 on fold
- (E) Upper Front Flounce - cut 1 +1
- (F) Lower Front Flounce - cut 1 +1
- (G) Upper Back Flounce - cut 1 +1
- (H) Lower Back Flounce - cut 1 +1
- (I) Front Facing - cut 1
- (J) Back Facing - cut 1 +1

Interfacing

- (I) Front Facing - cut 1
- (J) Back Facing - cut 1 +1

* The capital letters in brackets correspond to pattern blocks as seen in Online Fabric Estimator and in pattern blocks preview on the right.



INSTRUCTIONS:

- Apply fusible interfacing according to the Cutting instructions.
- Pin Side Fronts to Back, wrong sides together. Sew, serge and press towards back.
- Pin Middle Skirt to Shell, wrong sides together, matching the line on Middle Skirt to the side seam. Sew, serge and press towards top.
- Serge center back edges of Upper Back Flounces separately. Pin together, wrong sides together, sew and press apart.
- Pin side edges of Upper Front Flounce to Upper Back Flounce, wrong sides together, and sew. Serge and press towards back.

- Pin upper flounces to Middle Skirt, wrong sides together, sew, clip into curves, serge and press towards top.
- Serge center back edges of Lower Back Flounces separately. Pin together, wrong sides together, sew and press apart.
- Pin side edges of Lower Front Flounce to Lower Back Flounce, wrong sides together, and sew. Serge and press towards back.
- Pin lower flounces to upper flounces, wrong sides together, sew, clip into curves, serge and press towards top.
- Serge lower edge of Center Front Panel, turn under, press and topstitch or slipstitch as desired.
- Pin one side of Center Front Panel to Shell, wrong sides together, matching notches with the neckline of front panel, apex mark, skirt seams, and matching the mark on Lower Front Flounce with the hem of Center Front Panel. Sew. Clip into seam allowance a little above the mark on Lower Front Flounce, where it meets the hem of Center Front Panel, and turn the seam allowance below the mark under. Serge seam allowances above the clip and press towards center front. Repeat for the other side.
- Sew shoulder seams. Serge and press towards back.
- Sew shoulder seams of neckline facings. Press seam apart and serge. Serge outer edge of facings.
- Pin facing onto Shell right sides together, adjusting neckline edges. Sew the neckline. Clip into curves, turn pieces right side out and press. Slip stitch facing to seam allowances of shoulder seam on Shell.
- Sew side seams of armhole facings. Press seam apart and serge. Serge outer edge of facings. Pin facing onto Shell right sides together, adjusting armhole edges and matching markings. Sew the armhole in two steps - first one front, and then the back. Clip into curves, turn pieces right side out and press. Topstitch seam allowances onto facing.
- Serge hem, turn under, press and topstitch or slip stitch as desired.

TECHNICAL DRAWING:

