

## Sewing Pattern — Dress 4279

Recommendations on fabric: thin, well draping two-sided dress fabric (silk, viscose, mixed fabrics).

You will also need: blind zipper, elastic of 0.5 cm wide.

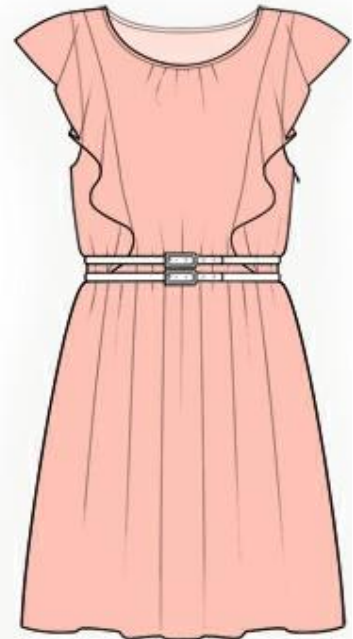
If the pattern has double contour the seam allowances are included.

If the pattern has single contour, the seam allowances are NOT included and need to be added when laying out and cutting details.

Seam allowance: hem of the garment – 3.0 cm, outer edge of the flounce, back part / front part neckline edges – 0 cm, all other seams – 1 cm.

Attention! First of all please print all the paper patterns and lay them out at the width of fabric you plan to use (usually from 90 to 150 cm) to see how much fabric you will need. Don't forget to count pair parts and symmetrical parts.

When sewing the garment, pay attention to notches, they must coincide.



### **CUTTING:**

Main fabric:

1. Central back part - 1 detail
2. Side back part - 2 details
3. Lower back part - 1 detail
4. Lower front part - 1 detail
5. Side front part - 2 details
6. Central front part - 1 detail
7. Flounce – 2 details

### **INSTRUCTIONS:**

1. Stitch loosely along front part neckline, between notches, and make a slight ruffle. Sew right shoulder edges on central back/front parts, press seam onto back part and serge. Cut bias tape that is as long as of back part / front part neckline + 5 cm. Press bias tape in half lengthwise wrong sides together, unfold, turn longitudinal edges inside, towards center and press once again. Overstitch neckline edge with bias tape. Sew left shoulder edges of central parts, press seam onto back part and serge.
2. Sew shoulder seams on side parts of the back / front, press seam onto back part and serge.

3. Cut bias tape of 4 cm wide and as long as outer edge of the flounce + 3 cm. Press bias tape in half lengthwise wrong sides together, unfold, turn longitudinal edges inside, towards center and press once again. Overstitch outer edge of the flounce. Or serge outer edge of the flounce with thin rolled seam.
4. Sew central and side parts of the back / front, inserting the flounce between them. Press seam allowances towards center, serge.
5. Cut bias tape of 4 cm wide and as long as the armhole + 5cm. Fold bias tape in half lengthwise wrong sides together and press. Fold the bias tape with edge of the armhole from the right side and overstitch. Slash seam allowances. Turn bias tape onto wrong side and topstitch along the fold onto main detail. Press the seam.
6. Serge separately left side edges of top part. Sew left side seam from the armhole up to the first notch. Press apart the seam. Sew right side seam of top part, press seam onto back part and serge. Make barred end on side seams at armhole level.
7. Serge separately left side edges of lower part. Sew left side seam from zipper notch downwards. Press apart the seam. Sew right side seam of lower part, press seam onto back part and serge. Stitch loosely along top edge and gather ruffles.
8. Stitch lower part to top part, press seam allowances upwards and serge.
9. Sew zipper into left side seam.
10. Cut a piece of elastic that is equal to waist circumference and topstitch it, stretching out, onto allowance of top and lower parts connecting seam.
11. Press hem of the garment onto wrong side at 1 cm, then again at 2 cm and topstitch. **ADVICE:** Wear the dress with the belt.

### **TECHNICAL DRAWING:**

