

Y1960002 1960S Dress

Recommended fabrics: natural/mixed fabrics suitable for dresses.

You will also need: fusible interfacing, dress zipper.

Seam allowances: all seams 3/8 inch, shoulder, side and center back seams - 5/8 inch, outer edge of facings - 0 inch, hem of dress - 1 inch, hem of sleeve - 5/8 inch.

Note on seam allowances:

- If the pattern has double contour the seam allowances are included.

- If the pattern has single contour, the seam allowances are NOT included and need to be added when laying out the pattern.

Note on length of fabric:

Attention! The amount of fabric needed for your pattern is not included. It will depend on the selected pattern size, the width, and design of the fabric you plan to use. You are welcome to use the Online Fabric Estimator to make calculations. Alternatively, print all the paper patterns and lay them out at the width of fabric you plan to use (usually from 90 to 150 cm). Measure how much fabric you will need. Don't forget to account for pieces that need to be cut multiple times and pieces that are cut on the fold.



PRINTING:

Please use Adobe Reader software to open your PDF pattern. You can get Adobe Reader free of charge at this link - <https://get.adobe.com/reader/>.

Make sure you print your patterns at actual size (100%% scale or None) and on single sides of plain A4 paper. Verify that the print out size is to the correct scale by measuring the test square on the first page. The upper edge of the square features a centimeter scale, and the bottom edge features an inch scale.

Trim top and/or right margin of the pages where you see the scissors symbols. In the center of each page, the number of row and column is printed, separated by / sign. Construct layout pages according to these marks (for example, page marked 2/3 is in the second row and in the third column). Align pages using margins and tape or glue together.

CUTTING:

Note on cutting:

Lay out your pieces according to straight of grain as marked on the pattern pieces.

Some pieces will be cut on the fold, the corresponding edge will then be marked with a fold mark. Kindly pay attention to notes regarding type of fabric and quantity of required pieces on a block. For example, [Main, Interfacing - cut 1+1] on a pattern piece means that you need to cut 1 piece as is and 1 mirrored piece from the main fabric as well as from interfacing.

Make sure to mark all notches and other design features such as pleats etc. from the pattern piece onto your fabric. When sewing the garment, pay attention to notches, they must match up.

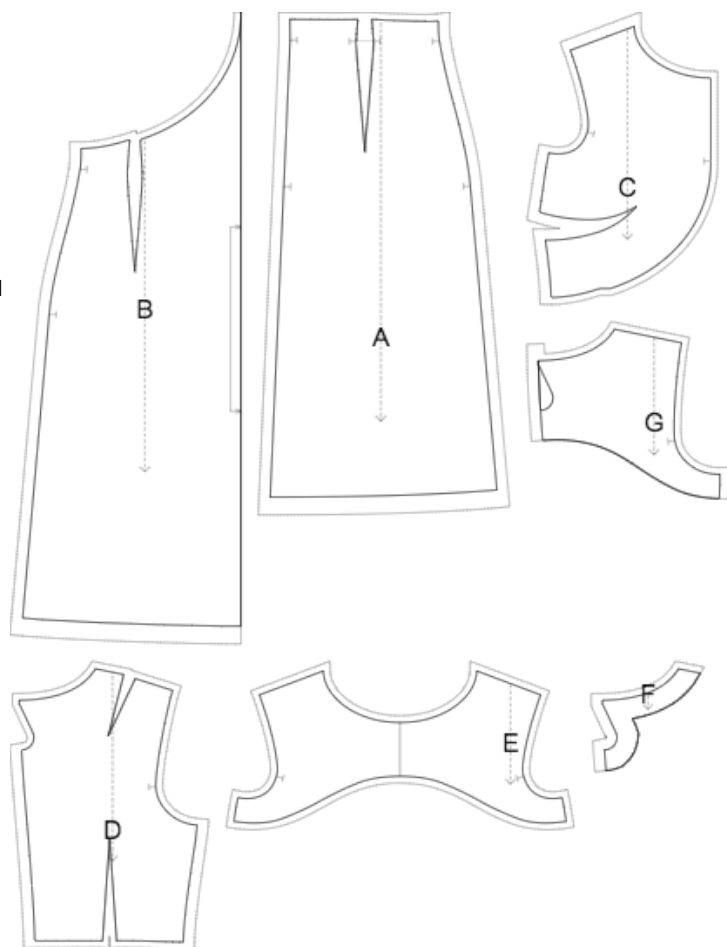
Self

- (A) Back Skirt - cut 1 +1
- (B) Front Skirt - cut 1 on fold
- (C) Upper Front - cut 1 +1
- (D) Back - cut 1 +1
- (E) Front Facing - cut 1
- (F) Back Facing - cut 1 +1

Interfacing

- (E) Front Facing - cut 1
- (F) Back Facing - cut 1 +1

* The capital letters in brackets correspond to pattern blocks as seen in Online Fabric Estimator and in pattern blocks preview on the right.



INSTRUCTIONS:

1. Apply fusible interfacing according to the Cutting instructions.
2. Sew darts on Front pieces. Cut bulk off of 1 cm, if desired. Press towards top.
3. Sew darts on Front Skirt. Press towards center.
4. Sew darts on Back Skirts. Press towards center.
5. Sew Front Bodice to Front Skirt. Serge and press towards top. Treat as one Front piece in the future.
6. Sew Back Bodices to Back Skirts pairwise. Serge and press towards top. Treat as whole Back pieces in the future.
7. Serge center back edges separately. Sew in dress zipper, preferably using invisible zipper foot. Sew center back seam AFTER you have installed the zipper, stitch as closely as you can to the end of the zipper. Slipstitch

the opening and press.

8. Sew shoulder seams. Serge and press towards back.

9. Sew shoulder seams of neckline facings. Press seam apart and serge. Serge outer edge of facings. Pin facing onto Shell right sides together, adjusting neckline edges. Fold the facing away all the way along EXCEPT for the area 5 mm from the edge of dress zipper and pin it to upper edge of garment. Fold seam allowances along zipper onto right side and pin to neckline on top of facings. Sew the neckline. Clip into curves, turn pieces right side out and press. Slip stitch facing to seam allowances of shoulder seam on Shell. Slipstitch facing to zipper tape.

10. Sew side seams. Serge and press towards back.

11. Sew shoulder (if not yet sewn) and side seams of armhole facings. Press seam apart and serge. Serge outer edge of facings. Pin facing onto Shell right sides together, adjusting armhole edges and matching markings. Sew the armhole in two steps - first one front, and then the back. Clip into curves, turn pieces right side out and press. Topstitch seam allowances onto facing.

12. Serge hem, turn under, press and topstitch or slip stitch as desired.

TECHNICAL DRAWING:

