

## Dress With Pockets - Sewing Pattern #2050

Recommendations on fabric: natural/mixed fabric suitable for dresses.

You will also need: dress zipper, fusible interfacing.

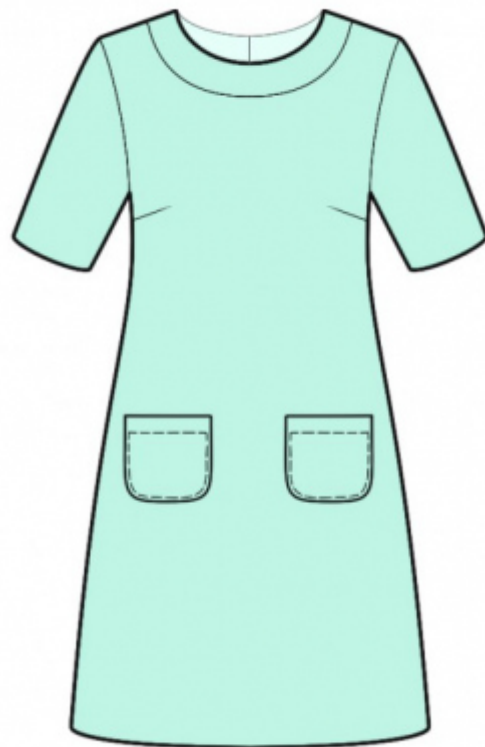
Seam allowances: all seams 1 cm; seam allowance for hem of dress, hem of sleeve and upper edge of pocket - 2.0 cm.

### Note on seam allowances:

- If the pattern has double contour the seam allowances are included. They are 1 cm unless specified otherwise.
- If the pattern has single contour, the seam allowances are NOT included and need to be added when laying out the pattern.

### Note on length of fabric:

*Attention! The amount of fabric needed for your pattern is not included. It will depend on the selected pattern size, the width, and design of the fabric you plan to use. First, print all the paper patterns and lay them out at the width of fabric you plan to use (usually from 90 to 150 cm). Measure how much fabric you will need. Don't forget to account for pieces that need to be cut multiple times and pieces that are cut on the fold.*



## CUTTING:

### Note on cutting:

*On the pattern pieces, "beam" means straight of grain. Lay out your pieces accordingly. Some pieces will be cut on the fold. This is noted on the pattern piece. Mark all notches and other design features such as pleats etc. from the pattern onto your fabric.*

*When sewing the garment, pay attention to notches, they must match up.*

Main fabric:

1. Back - cut 2
2. Front - cut 1 on fold
3. Sleeve - cut 2
4. Pocket - cut 2
5. Back neck facing - cut 4
6. Front neck facing - cut 2

Fusible interfacing:

1. Back neck facing – cut 2
2. Front neck facing – cut 1

## **INSTRUCTIONS:**

1. Apply fusible interfacing to neckline facings.
2. Sew darts on back and front. Press bulk of waist darts towards center, press bulk of bust darts towards top.
3. Sew back neckline facing to back, press seam allowances towards placket. Sew front neckline facing to facing, press seam allowances towards placket.
4. Serge center back edges separately on each piece. Sew center seam from notch for zipper down to hem, press seam apart. Sew in zipper.
5. Serge pocket around all edges. Press upper seam allowance of pocket onto wrong side and topstitch. Press side and lower seam allowances onto wrong side. Topstitch pocket onto front according to markings.
6. Sew side and shoulder seams, press seams towards back and serge.
7. Sew shoulder seams on inner facings, press seam apart. Serge outer edge. Pin facings to garment right sides together and sew the neckline. Clip seam allowances, fold facing onto wrong side and stitch-in-the-ditch along seam of outer facing.
8. Sew sleeve seam, press seams towards back and serge. Sew sleeves into armholes matching notches and adjusting ease, serge and press.
9. Serge seam allowance for hem of garment and hem of sleeve, press onto wrong side and topstitch.

## **TECHNICAL DRAWING:**

