

S3123 Skirt With Flounces

Recommended fabrics: well draping denim fabric with elastane

You will also need: fusible interfacing, dress zipper, hook and eye, or a hidden button with a loop buttonhole made from a scrap of lining fabric.

Seam allowances: all seams 3/8 inch, side and center back seams - 5/8 inch, outer edge of facings - 0 inch, hem of skirt - 1 inch.

Note on seam allowances:

- If the pattern has double contour the seam allowances are included.

- If the pattern has single contour, the seam allowances are NOT included and need to be added when laying out the pattern.

Note on length of fabric:

Attention! The amount of fabric needed for your pattern is not included. It will depend on the selected pattern size, the width, and design of the fabric you plan to use. You are welcome to use the Online Fabric Estimator to make calculations. Alternatively, print all the paper patterns and lay them out at the width of fabric you plan to use (usually from 90 to 150 cm). Measure how much fabric you will need. Don't forget to account for pieces that need to be cut multiple times and pieces that are cut on the fold.



PRINTING:

Please use Adobe Reader software to open your PDF pattern. You can get Adobe Reader free of charge at this link - <https://get.adobe.com/reader/>.

Make sure you print your patterns at actual size (100%% scale or None) and on single sides of plain A4 paper. Verify that the print out size is to the correct scale by measuring the test square on the first page. The upper edge of the square features a centimeter scale, and the bottom edge features an inch scale.

Trim top and/or right margin of the pages where you see the scissors symbols. In the center of each page, the number of row and column is printed, separated by / sign. Construct layout pages according to these marks (for example, page marked 2/3 is in the second row and in the third column). Align pages using margins and tape or glue together.

CUTTING:

Note on cutting:

Lay out your pieces according to straight of grain as marked on the pattern pieces.

Some pieces will be cut on the fold, the corresponding edge will then be marked with a fold mark. Kindly pay attention to notes regarding type of fabric and quantity of required pieces on a block. For example, [Main, Interfacing - cut 1+1] on a pattern piece means that you need to cut 1 piece as is and 1 mirrored piece from the main fabric as well as from interfacing.

Make sure to mark all notches and other design features such as pleats etc. from the pattern piece onto your fabric. When sewing the garment, pay attention to notches, they must match up.

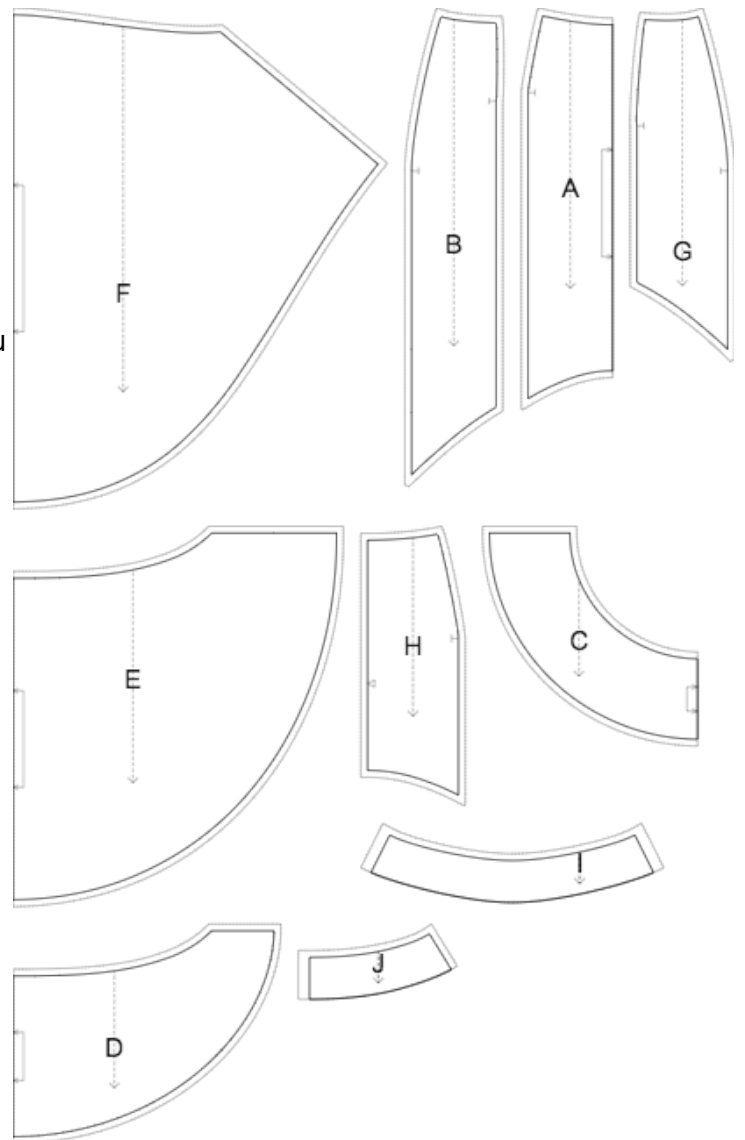
Self

- (A) Center front - cut 1 on fold
- (B) Side front - cut 1 +1
- (C) Front Flounce - cut 1 on fold
- (D) Back Flounce 1 - cut 1 on fold
- (E) Back Flounce 2 - cut 1 on fold
- (F) Back Flounce 3 - cut 1 on fold
- (G) Side Back - cut 1 +1
- (H) Center Back - cut 1 +1
- (I) Front Facing - cut 1
- (J) Back Facing - cut 1 +1

Interfacing

- (I) Front Facing - cut 1
- (J) Back Facing - cut 1 +1

* The capital letters in brackets correspond to pattern blocks as seen in Online Fabric Estimator and in pattern blocks preview on the right.



INSTRUCTIONS:

1. Serge and press under seam allowances along the lower edge of the Back Flounce 1 and Back Flounce 2, topstitch.
2. Pin Back Flounce 1 onto Back Flounce 2, and onto Back Flounce 3, matching the upper edge, baste together along upper edge and side edges.
3. Sew Side Backs to Center Backs, clip into curves, serge and press towards center.
4. Serge center back edges separately. Sew in zipper, sew center back seam from zipper down to lower edge,

and press the seam apart. Pin Back Flounces onto Back, right sides together, sew, clip into curves and serge. Press away from flounces.

5. Sew Center Front to Side Fronts, clip into curves, serge and press towards center.

6. Pin Front Flounce onto Front, right sides together, and sew. Clip into curves, serge and press towards Front.

7. Pin Back Skirt to Front Skirt along side edges, matching notches. Back Flounce 2 ends where the Front Flounce begins. Sew, serge and press towards back.

8. Serge lower edge of skirt, press onto wrong side and topstitch.

9. Serge side edges of facings separately, sew and press apart. Serge lower edge of facing. Pin facing onto skirt from the right side, sew along upper edge. Fold facing onto wrong side and press. Fold back center edges of facings under and slipstitch them to zipper tape. Sew on hook and eye or a hidden button with a loop buttonhole.

TECHNICAL DRAWING:

