

Cord Dress - Sewing Pattern #2031

Recommendations on fabric: natural/mixed suiting fabrics.

You will also need: dress zipper; lining; fusible interfacing.

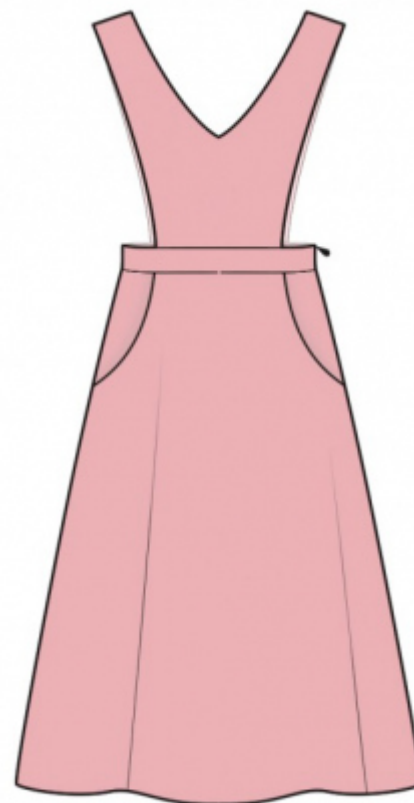
Seam allowances: all seams 1 cm. Seam allowance along hem - 2 cm.

Note on seam allowances:

- If the pattern has double contour the seam allowances are included. They are 1 cm unless specified otherwise.
- If the pattern has single contour, the seam allowances are NOT included and need to be added when laying out the pattern.

Note on length of fabric:

Attention! The amount of fabric needed for your pattern is not included. It will depend on the selected pattern size, the width, and design of the fabric you plan to use. First, print all the paper patterns and lay them out at the width of fabric you plan to use (usually from 90 to 150 cm). Measure how much fabric you will need. Don't forget to account for pieces that need to be cut multiple times and pieces that are cut on the fold.



CUTTING:

Note on cutting:

On the pattern pieces, "beam" means straight of grain. Lay out your pieces accordingly. Some pieces will be cut on the fold. This is noted on the pattern piece. Mark all notches and other design features such as pleats etc. from the pattern onto your fabric.

When sewing the garment, pay attention to notches, they must match up.

Main fabric:

1. Upper back - cut 2
2. Upper front - cut 1
3. Lower front - cut 1 on fold
4. Lower back - cut 1 on fold
5. Side skirt - cut 2
6. Belt - cut 2

Fusible interfacing:

1. Belt - cut 2

Lining:

1. Upper back - cut 2
2. Upper front - cut 1
3. Pocket lining - cut 2

INSTRUCTIONS:

1. Apply fusible interfacing to skirt waistband.
2. Sew center back seams on Shell and on back lining. Press seam apart.
3. Sew shoulder seams on Shell and lining, press seam apart.
4. Pin Shell to lining and sew neckline. Clip seam allowances, turn pieces right side out. Sew armholes in two steps: first back armhole, then front armhole. Clip seam allowances, turn piece right side out and press.
5. Pin outer and inner waistbands together, right sides together, insert upper front and upper back, and sew along outer edge.
6. Pin pocket lining onto lower skirt and sew pocket opening. Pin lower part at front side and sew together edges of pocket bags. Serge seam allowances.
7. Serge side edges of skirt separately. Sew right edge, press seam apart. Sew left side edge from notch for zipper to bottom. Press seam apart.
8. Sew outer waistband to skirt, press seam allowance towards top. Sew in zipper. Turn under the seam allowance of inner waistband and stitch-in-the-ditch. Slipstitch side edges of belt to zipper tape.
9. Serge lower edge, press onto wrong side and topstitch.

TECHNICAL DRAWING:

