

Sewing Pattern — Poncho 4280

Recommendations on fabric: soft fabric suitable for coats

You will also need: 5 buttons

If the pattern has double contour the seam allowances are included.

If the pattern has single contour, the seam allowances are NOT included and need to be added when laying out and cutting details.

Seam allowance: along slit – 2.5 cm, all other seams – 1.5 cm

Attention! First of all please print all the paper patterns and lay them out at the width of fabric you plan to use (usually from 90 to 150 cm) to see how much fabric you will need. Don't forget to count pair parts and symmetrical parts.

When sewing the garment, pay attention to notches, they must coincide.

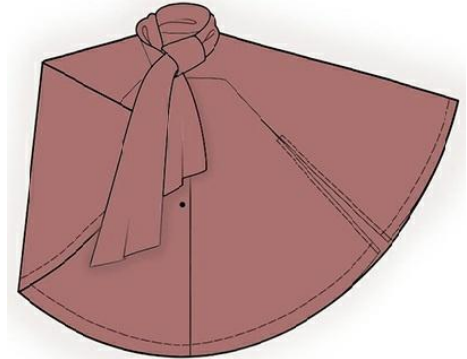
CUTTING:

Main fabric:

1. Front part – 2 details
2. Back part – 2 details
3. Sleeve — 2 details
4. Collar - 2 details
5. Buttonstand — 2 details
6. Back neckline facing - 1 detail

INSTRUCTIONS:

1. Stitch back part of sleeve to back part. Slash seam in corner, serge and press apart. Sew center edge of back part. Serge seam allowances and press them apart.
2. Serge upper and cross edge on front part. Serge corresponding edges on the sleeve. Stitch front part to the sleeve, finishing the stitch at the notch level. Press apart the seam. Put the stitch along the slit at 1.5 cm off the edge.
3. Sew facing of shoulder seams and buttonstands. Press apart the seam. Serge outer edge. Put buttonstand onto right side of the poncho and overstitch along buttonstand. Overstitch the neckline on section from the notch up to buttonstand. Slash seam allowance at the notch level.
4. Sew center edge of collar. Press apart the seam. Fold collar in half lengthwise right sides together and overstitch corners and long sides from the corner up to T-shaped notch. Slash seam allowance near the notch. Turn collar out and press. Sew upper collar into the neckline of back part and of front part, lower collar - into the neckline of facing / buttonstand. Press apart the seam. On the wrong side fix seam allowances close to collar connecting seam.



5. Serge hem of the poncho, turn inside edges and topstitch.
6. Serge buttonholes on right front part, sew buttons on left front part.

TECHNICAL DRAWING:

