

S4046 Sarafan With Straps

Recommended fabrics: natural/mixed fabrics suitable for dresses.

You will also need: dress zipper, fusible interfacing.

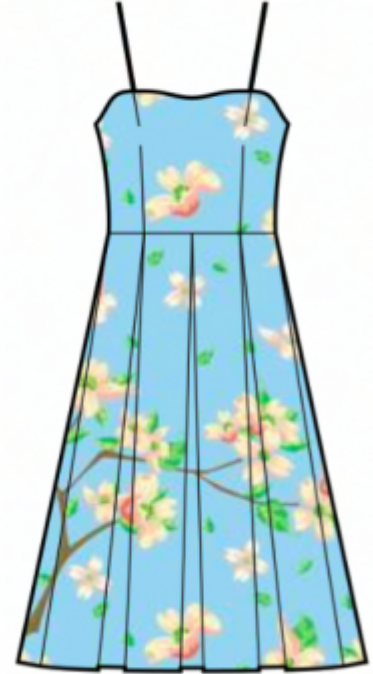
Seam allowances: all seams 3/8 inch, side seams 5/8 inch, hem 1 inch.

Note on seam allowances:

- If the pattern has double contour the seam allowances are included.
- If the pattern has single contour, the seam allowances are NOT included and need to be added when laying out the pattern.

Note on length of fabric:

Attention! The amount of fabric needed for your pattern is not included. It will depend on the selected pattern size, the width, and design of the fabric you plan to use. You are welcome to use the Online Fabric Estimator to make calculations. Alternatively, print all the paper patterns and lay them out at the width of fabric you plan to use (usually from 90 to 150 cm). Measure how much fabric you will need. Don't forget to account for pieces that need to be cut multiple times and pieces that are cut on the fold.



PRINTING:

Please use Adobe Reader software to open your PDF pattern. You can get Adobe Reader free of charge at this link - <https://get.adobe.com/reader/>.

Make sure you print your patterns at actual size (100%% scale or None) and on single sides of plain A4 paper. Verify that the print out size is to the correct scale by measuring the test square on the first page. The upper edge of the square features a centimeter scale, and the bottom edge features an inch scale.

Trim top and/or right margin of the pages where you see the scissors symbols. In the center of each page, the number of row and column is printed, separated by / sign. Construct layout pages according to these marks (for example, page marked 2/3 is in the second row and in the third column). Align pages using margins and tape or glue together.

CUTTING:

Note on cutting:

Lay out your pieces according to straight of grain as marked on the pattern pieces.

Some pieces will be cut on the fold, the corresponding edge will then be marked with a fold mark. Kindly pay attention to notes regarding type of fabric and quantity of required pieces on a block. For example, [Main, Interfacing - cut 1+1] on a pattern piece means that you need to cut 1 piece as is and 1 mirrored piece from the main fabric as well as from interfacing.

Make sure to mark all notches and other design features such as pleats etc. from the pattern piece onto your fabric. When sewing the garment, pay attention to notches, they must match up.

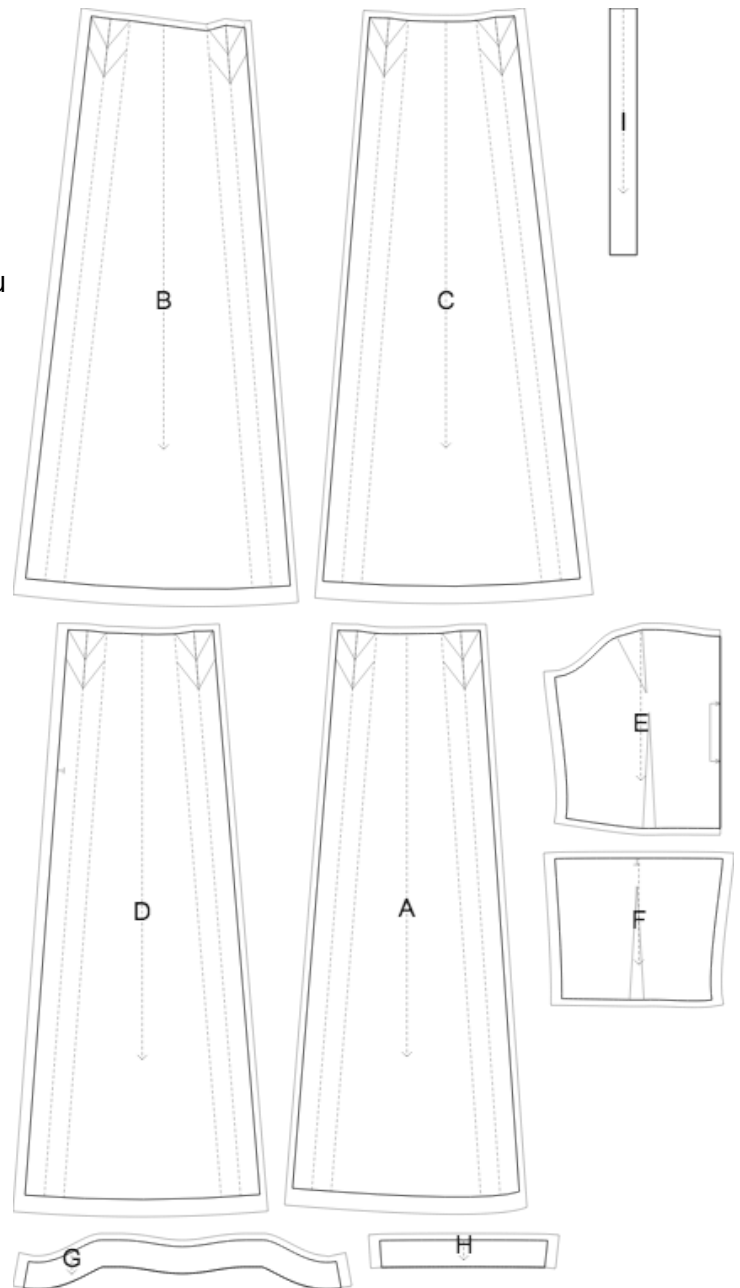
Self

- (A) Front Center Skirt - cut 1 +1
- (B) Front Side Skirt - cut 1 +1
- (C) Back Side Skirt - cut 1 +1
- (D) Back Center Skirt - cut 1 +1
- (E) Front - cut 1 on fold
- (F) Back - cut 1 +1
- (G) Front Top Facing - cut 1
- (H) Back Top Facing - cut 1 +1
- (I) Strap - cut 1 +1

Interfacing

- (G) Front Top Facing - cut 1
- (H) Back Top Facing - cut 1 +1

* The capital letters in brackets correspond to pattern blocks as seen in Online Fabric Estimator and in pattern blocks preview on the right.



INSTRUCTIONS:

1. Apply fusible interfacing according to the Cutting instructions.
2. Stitch bust and waist darts on Front pieces. Press the bulk of bust darts towards the center and waist darts toward the center.
3. Sew darts on Back pieces. Press bulk of darts towards center.

4. FRONT SKIRT

- Serge side edges of Front Side Skirts and Front Center Skirts separately.
- Sew Front Side Skirts to Front Center Skirts. Press apart.
- Make box pleats according to markings, press and baste from waistline 5-7 cm down.

- Treat as one piece (Front Skirt) in the future.

BACK SKIRT

- Serge side edges of Back Side Skirts and Back Center Skirts separately.
 - Sew Back Side Skirts to Back Center Skirts. Press apart.
 - Make box pleats according to markings, press and baste from waistline 5-7 cm down.
 - Treat as one piece (Back Skirts) in the future.
5. Sew Front Bodice to Front Skirt. Serge and press towards top. Treat as one Front piece in the future.
 6. Sew Back Bodices to Back Skirts pairwise. Serge and press towards top. Treat as whole Back pieces in the future.
 7. Serge center back edges separately. Sew in dress zipper, preferably using invisible zipper foot. Sew center back seam AFTER you have installed the zipper, stitch as closely as you can to the end of the zipper. Slipstitch the opening and press.
 8. Fold strap in half lengthwise, right sides together, and sew long edge. Turn right side out, placing seam on fold, press. Topstitch at 0.2 cm from the edge.
 9. Sew side seams of back and front top edge facings, serge lower edge. Pin facing to garment and sew upper edge, inserting straps on front according to markers. Trim corners, and understitch. Turn facing onto wrong side, press. Turn center back edges to inside and slipstitch to zipper tape. Topstitch facing into connecting seam. Put on garment, adjust length of straps, serge lower edges and fasten them to back facing over side back seams.
 10. Serge hem, turn under, press and topstitch or slip stitch as desired.

TECHNICAL DRAWING:

