

Sewing Pattern — Tunic 4051

Recommendations on fabric: natural or mixed, well draping, low to medium stretchy knit fabric

You will also need: knit tape (or bias tape) of 4 cm wide for piping (tape length is shown on front pattern piece), elastic thread.

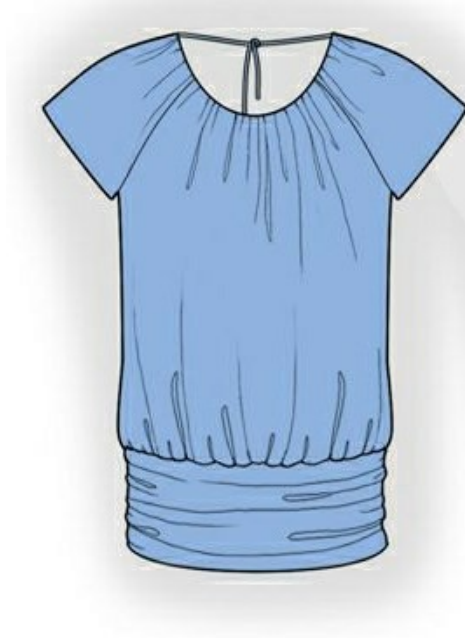
If the pattern has a double line around it, the seam allowances are included.

Note: By default, seam allowances are NOT included (single line) and will need to be added when laying out and cutting details.

Seam allowances: on top edge of sleeve and front neckline – 0 cm, on slanting edges of back and lower edge of sleeve — 1.5 cm, all other seams - 0.7 cm

Attention! First of all, please print all the paper patterns and lay them out at the width of fabric you plan to use (usually from 90 to 150 cm) to see how much fabric you will need. Don't forget to take into account pieces to be duplicated or cut on a fold.

When sewing the garment, pay attention to notches, they must match up with corresponding pieces.



CUTTING:

The word, “beam” used on some patterns means “straight of grain”. Some pieces will be cut on the fold, this is noted on the pattern piece. Mark all notches and other design features such as darts, pleats etc. from the pattern onto your fabric.

Advice:

Knit fabric pieces are sewn together with special stretch-stitch or narrow zig-zag stitch. Seam allowance on hem is stitched with twin needles to save stretchiness. Pieces can also be sewn together with 3 or 4 – thread serger. When serging, cut seam allowances to 0.6 – 0.8 cm.

Fabric:

1. Back – 2 details
2. Front – 1 detail on fold
3. Lower part – 2 details
4. Sleeve — 2 details

INSTRUCTIONS:

1. Stitch sleeve to front. Serge and press seam.
2. Stitch loosely on front neckline edge and on top edge of sleeves and gather ruffles. Overstitch neckline with bias tape.
3. Stitch sleeve to back, leveling edges from lower point of the armhole. Armhole of back is 1.5 cm longer than curve. Serge seams and press toward back. Serge seam allowance on slanting edge of back, turn inside, rounding the armhole, and topstitch.
4. Sew side seams of back and front, sewing sleeve seam at the same time. Serge seams and press toward back.
5. Place lower parts right sides together and sew into ring on short sides. Fold lower part in half lengthwise wrong sides together and press. On side edges of lower part put the stitch with elastic thread.
6. Overlap backs and fasten together. Stitch loosely on lower edge of back and front and gather ruffles. Adjust the length of lower edge of back / front and the edge of lower part. Stitch lower part, serge seams and press upwards. Remove gathering stitch.
7. Serge lower edge of sleeve, turn inside and topstitch.
8. Make two ties of 65-75 cm long from bias tape. Sew ties to sleeve at shoulder point.

TECHNICAL DRAWING:

