

S4041 Dress With Front Button Closure

Recommended fabrics: natural/mixed fabrics suitable for dresses.

You will also need: fusible interfacing, 9-10 buttons.

Note on seam allowances:

- If the pattern has double contour the seam allowances are included.
- If the pattern has single contour, the seam allowances are NOT included and need to be added when laying out the pattern.

Note on length of fabric:

Attention! The amount of fabric needed for your pattern is not included. It will depend on the selected pattern size, the width, and design of the fabric you plan to use. You are welcome to use the Online Fabric Estimator to make calculations. Alternatively, print all the paper patterns and lay them out at the width of fabric you plan to use (usually from 90 to 150 cm). Measure how much fabric you will need. Don't forget to account for pieces that need to be cut multiple times and pieces that are cut on the fold.



PRINTING:

Please use Adobe Reader software to open your PDF pattern. You can get Adobe Reader free of charge at this link - <https://get.adobe.com/reader/>.

Make sure you print your patterns at actual size (100%% scale or None) and on single sides of plain A4 paper. Verify that the print out size is to the correct scale by measuring the test square on the first page. The upper edge of the square features a centimeter scale, and the bottom edge features an inch scale.

Trim top and/or right margin of the pages where you see the scissors symbols. In the center of each page, the number of row and column is printed, separated by / sign. Construct layout pages according to these marks (for example, page marked 2/3 is in the second row and in the third column). Align pages using margins and tape or glue together.

CUTTING:**Note on cutting:**

Lay out your pieces according to straight of grain as marked on the pattern pieces.

Some pieces will be cut on the fold, the corresponding edge will then be marked with a fold mark. Kindly pay attention to notes regarding type of fabric and quantity of required pieces on a block. For example, [Main, Interfacing - cut 1+1] on a pattern piece means that you need to cut 1 piece as is and 1 mirrored piece from the main fabric as well as from interfacing.

Make sure to mark all notches and other design features such as pleats etc. from the pattern piece onto your fabric. When sewing the garment, pay attention to notches, they must match up.

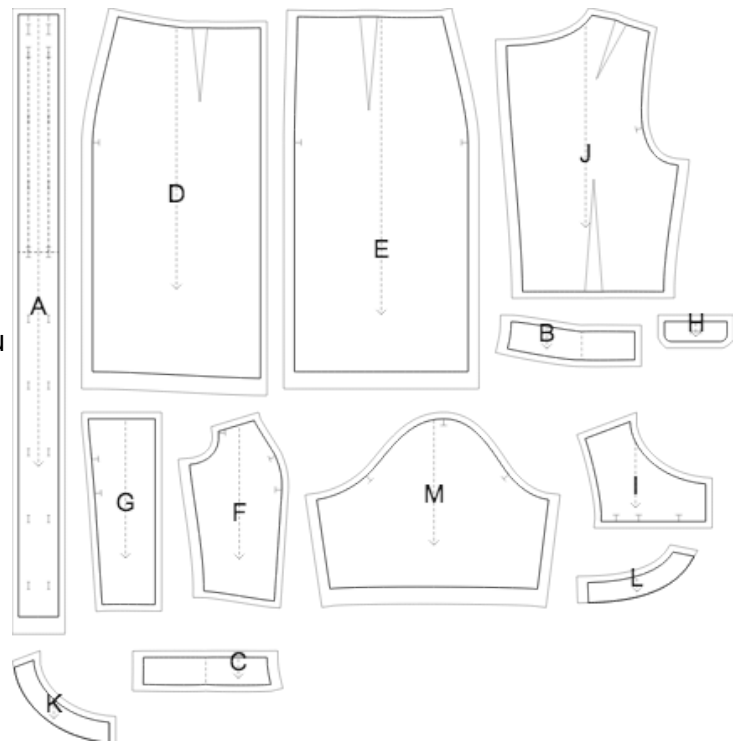
Self

- (A) Center Front Placket - cut 1 +1
- (B) Front Waistband - cut 1 +1
- (C) Back Waistband - cut 1 +1
- (D) Front Skirt - cut 1 +1
- (E) Back Skirt - cut 1 +1
- (F) Side Upper Front - cut 1 +1
- (G) Center Upper Front - cut 1 +1
- (H) Pocket Flap - cut 2 +2
- (I) Front Yoke - cut 1 +1
- (J) Back - cut 1 +1
- (K) Front Facing - cut 1 +1
- (L) Back Facing - cut 1 +1
- (M) Sleeve - cut 1 +1

Interfacing

- (A) Center Front Placket - cut 1 +1
- (H) Pocket Flap - cut 2 +2
- (K) Front Facing - cut 1 +1
- (L) Back Facing - cut 1 +1

* The capital letters in brackets correspond to pattern blocks as seen in Online Fabric Estimator and in pattern blocks preview on the right.

**INSTRUCTIONS:**

1. Apply fusible interfacing according to the Cutting instructions.

2. Sew Side Fronts to Center Front. Clip into the seam allowance along the curve. Serge the seams and press apart or towards the center.

Pin pocket flaps together, right sides together, and sew along curved edges, leaving straight longer edge unsewn. Clip into curves, turn right side out and press. Make buttonhole according to the marking. Pin between the markings to the yoke, right sides together. Pin lower part of bodice to the yoke, matching the notch for princess seam. Sew, serge and press towards yoke.

Treat as one piece (Front Bodice) in the future.

3. Sew darts on Back pieces. Stitch the dart using a stitch length of about 2 to 2.5 from the outer edge towards end of the dart, the last stitches very close to fabric. Stitch off the edge at the dart point, leave thread tails and tie a knot. Press bulk of darts towards center.

4. WAISTBAND. Sew Front Waist Band to Front Bodice matching notches. Serge and press towards inset.

- Treat the resulting piece as Front Bodice in the future.

- Sew Back Waistbands to Back Bodices pairwise, matching notches. Serge and press towards inset.

- Treat the resulting pieces as Back Bodices in the future.

5. Sew darts on Front Skirt. Stitch the dart using a stitch length of about 2 to 2.5 from the outer edge towards end of the dart, the last stitches very close to fabric. Stitch off the edge at the dart point, leave thread tails and tie a knot. Press towards center.

6. Sew darts on Back Skirts. Stitch the dart using a stitch length of about 2 to 2.5 from the outer edge towards end of the dart, the last stitches very close to fabric. Stitch off the edge at the dart point, leave thread tails and tie a knot. Press towards center.

7. Sew Front Bodice to Front Skirt. Serge and press towards top. Treat as one Front piece in the future.

8. Sew Back Bodices to Back Skirts pairwise. Serge and press towards top. Treat as whole Back pieces in the future.

9. Serge center back edges separately.

10. Sew center back seam and press apart.

11. Sew longer edge of button placket to center front. Press towards placket. Fold placket in half, right sides together, and sew upper corner. Trim corners, clip into corners. Turn the placket right side out, straighten the corner, and press.

12. Sew shoulder seams. Serge and press towards back.

13. Sew shoulder seams of neckline facings. Sew center back seam on neckline facings. Press seam apart and serge. Serge outer edge of facings. Pin facing onto Shell right sides together, adjusting neckline edges. Sew the neckline. Clip into curves, turn pieces right side out and press. Slip stitch facing to seam allowances of shoulder seam on Shell. Slipstitch facing to button placket.

14. Sew sleeves into armholes matching notches and gathering ease on cap. Serge and press towards sleeve.

15. Sew side and sleeve seams continuously. Serge and press towards back.
16. Serge lower edge of sleeves. Turn under, press and topstitch or slip stitch as desired.
17. Serge hem, turn under, press and topstitch or slip stitch as desired.
18. Turn under seam allowance along inner edge of button placket, pin to the seam between placket and front, and stitch in the ditch. Make buttonholes on right placket, sew on buttons on left placket.

TECHNICAL DRAWING:

