

S4038 Shirt Dress With Pleats

Recommended fabrics: natural/mixed light dress fabrics

You will also need: fusible interfacing, 7 buttons, lace trimming for hem of skirt (optionally).

Seam allowances: all seams 3/8 inches, shoulder, center back and side seams - 5/8 inches, hem of skirt - 1 inch, upper edge of pocket - 1 inch.

Note on seam allowances:

- If the pattern has double contour the seam allowances are included.

- If the pattern has single contour, the seam allowances are NOT included and need to be added when laying out the pattern.

Note on length of fabric:

Attention! The amount of fabric needed for your pattern is not included. It will depend on the selected pattern size, the width, and design of the fabric you plan to use. You are welcome to use the Online Fabric Estimator to make calculations. Alternatively, print all the paper patterns and lay them out at the width of fabric you plan to use (usually from 90 to 150 cm). Measure how much fabric you will need. Don't forget to account for pieces that need to be cut multiple times and pieces that are cut on the fold.



PRINTING:

Please use Adobe Reader software to open your PDF pattern. You can get Adobe Reader free of charge at this link - <https://get.adobe.com/reader/>.

Make sure you print your patterns at actual size (100%% scale or None) and on single sides of plain A4 paper. Verify that the print out size is to the correct scale by measuring the test square on the first page. The upper edge of the square features a centimeter scale, and the bottom edge features an inch scale.

Trim top and/or right margin of the pages where you see the scissors symbols. In the center of each page, the number of row and column is printed, separated by / sign. Construct layout pages according to these marks (for example, page marked 2/3 is in the second row and in the third column). Align pages using margins and tape or glue together.

CUTTING:

Note on cutting:

Lay out your pieces according to straight of grain as marked on the pattern pieces.

Some pieces will be cut on the fold, the corresponding edge will then be marked with a fold mark. Kindly pay attention to notes regarding type of fabric and quantity of required pieces on a block. For example, [Main, Interfacing - cut 1+1] on a pattern piece means that you need to cut 1 piece as is and 1 mirrored piece from the main fabric as well as from interfacing.

Make sure to mark all notches and other design features such as pleats etc. from the pattern piece onto your fabric. When sewing the garment, pay attention to notches, they must match up.

Self

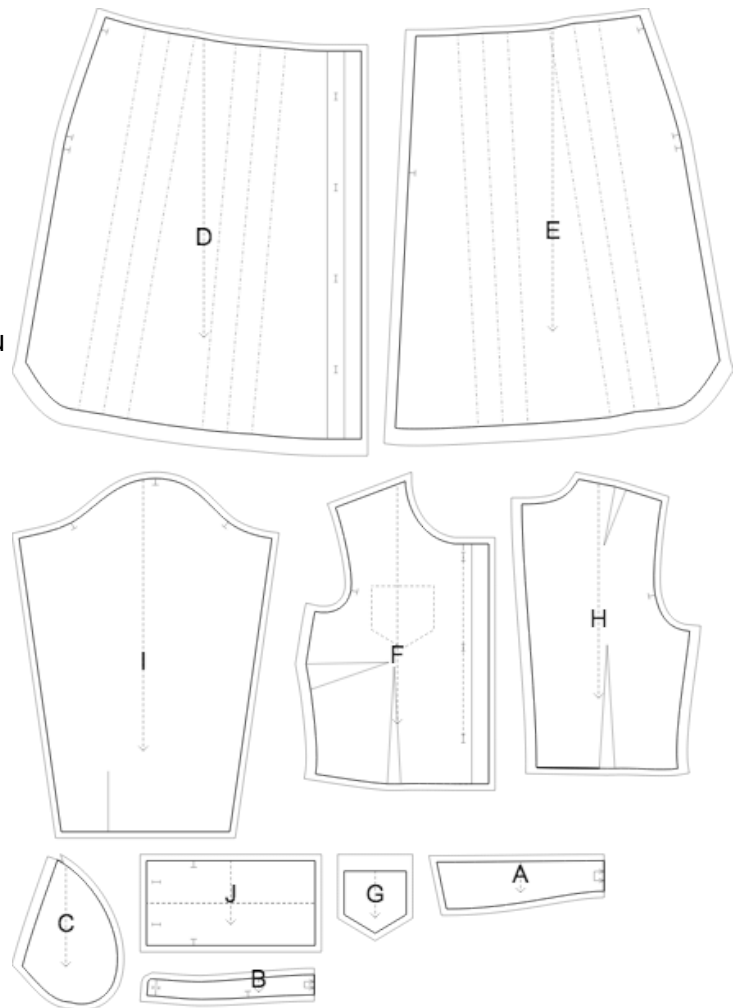
- (A) Collar - cut 1 +1 on fold
- (B) Stand Collar - cut 1 +1 on fold
- (C) Pocket Bag - cut 2 +2
- (D) Front Skirt - cut 1 +1
- (E) Back Skirt - cut 1 +1
- (F) Front - cut 1 +1
- (G) Pocket - cut 1
- (H) Back - cut 1 +1
- (I) Shirt Sleeve - cut 1 +1
- (J) Cuff - cut 1 +1

Interfacing:

- (A) Collar - cut 1 +1 on fold
- (B) Stand Collar - cut 1 +1 on fold
- (J) Cuff - cut 1 +1

Fusible interfacing is also applied to the front placket area.

* The capital letters in brackets correspond to pattern blocks as seen in Online Fabric Estimator and in pattern blocks preview on the right.



INSTRUCTIONS:

1. Apply fusible interfacing according to the Cutting instructions.
2. Stitch bust and waist darts on Front pieces. Stitch the dart using a stitch length of about 2 to 2.5 from the outer edge towards end of the dart, the last stitches very close to fabric. Stitch off the edge at the dart point,

leave thread tails and tie a knot. Press the bulk of bust darts towards bottom and waist darts toward the center.

3. Verify the position of the patch pocket on Left Front. Serge all edges of the pocket, turn seam allowances under, trim corners where necessary. Topstitch along the upper edge of the pocket. Pin pocket onto Left Front, and topstitch from the right side along the side and lower edges.

4. Sew darts on Back pieces. Stitch the dart using a stitch length of about 2 to 2.5 from the outer edge towards end of the dart, the last stitches very close to fabric. Stitch off the edge at the dart point, leave thread tails and tie a knot. Press bulk of darts towards center.

5. Make pleats on Back Skirts according to markings and baste them 5-7 cm down from the waistline. The bulk is directed towards center front.

6. Make box pleats on Front Skirt according to markings and baste them 5-7 cm down from the waistline. The bulk is directed towards center back.

7. Sew Front Bodice to Front Skirt. Serge and press towards top. Treat as one Front piece in the future.

8. Sew Back Bodices to Back Skirts pairwise. Serge and press towards top. Treat as whole Back pieces in the future.

9. Serge center back edges separately. Sew center back seam and press apart.

10. Fold front placket in half, right sides together, and sew upper corner. Trim corners, clip into corners. Turn the placket right side out, straighten the corner, and press.

11. Pin collars right sides together. Sew ends and outer edge of collar. Trim seam. Turn collar out, straighten and press. Topstitch at 0.5 cm along outer sides of collar. Pin collar stands right sides together, inserting collar between them, match notches and sew continuing the stitch along collar stand ends. Start and end stitch exactly at marked line of collar stand connecting seam. Turn collar out, straighten and press. Sew outer collar into neckline. Turn edge of inner collar under and topstitch into connecting seam.

12. Sew shoulder seams. Serge and press towards back.

13. Sew pocket bags to front and to back between the markings on side edges. Serge and press towards pocket bags.

14. Cut slit on sleeve along the marked line. Cut bias tape from main fabric (or take ready), its width should equal 4 cm and length should equal two lengths of slit + 4 cm. Fold bias tape in half lengthwise and press. Press outer seam allowances towards center. Sew bias tape to slit of sleeve (pin bias tape to slit edge from the right side and sew, fold bias tape onto wrong side and topstitch onto garment along fold line).

15. Sew side and sleeve seams continuously, sewing the pocket bags at the same time. Serge and press towards back.

16. Fold cuff in half lengthwise, right sides together and sew short sides. Start stitching exactly at the line which marks the seam between cuff and sleeve. Turn cuff right side out and press. Sew outer side of cuff to lower edge of sleeve. Fold inside inner side of cuff and stitch in the ditch. Make buttonholes on cuffs and sew on

buttons.

17. Serge hem, turn under, press and topstitch or slip stitch as desired.

18. Topstitch along front placket. Make buttonholes on right placket and sleeve straps. Sew buttons on left placket.

TECHNICAL DRAWING:

