

## Mix and Match Pattern

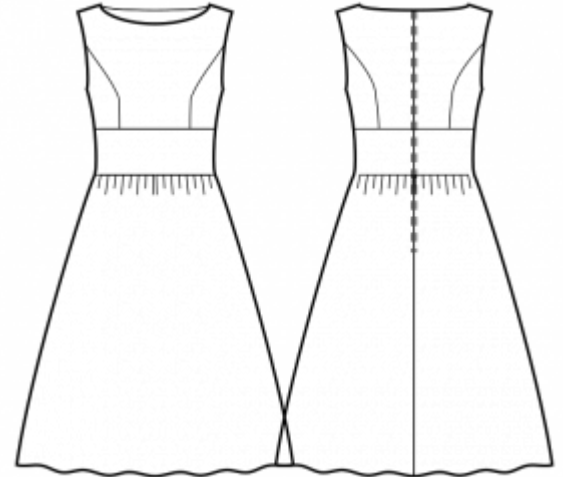
**Dress - Fitted - Bateau neckline - No collar - Maxi length - No front closure - Dress with high waist inset - Gathered skirt - Princess front seam: Upper armhole to waist - Back princess seam: back upper armhole to waist - No sleeves**

### Note on seam allowances:

- If the pattern has double contour the seam allowances are included.
- If the pattern has single contour, the seam allowances are NOT included and need to be added when laying out the pattern.

### Note on length of fabric:

Attention! The amount of fabric needed for your pattern is not included. It will depend on the selected pattern size, the width, and design of the fabric you plan to use. You are welcome to use the Online Fabric Estimator to make calculations. Alternatively, print all the paper patterns and lay them out at the width of fabric you plan to use (usually from 90 to 150 cm). Measure how much fabric you will need. Don't forget to account for pieces that need to be cut multiple times and pieces that are cut on the fold.



### PRINTING:

Please use Adobe Reader software to open your PDF pattern. You can get Adobe Reader free of charge at this link - <https://get.adobe.com/reader/>.

Make sure you print your patterns at actual size (100% scale or None) and on single sides of plain A4 paper. Verify that the print out size is to the correct scale by measuring the test square on the first page. The upper edge of the square features a centimeter scale, and the bottom edge features an inch scale.

Trim top and/or right margin of the pages where you see the scissors symbols. In the center of each page, the number of row and column is printed, separated by / sign. Construct layout pages according to these marks (for example, page marked 2/3 is in the second row and in the third column). Align pages using margins and tape or glue together.

### CUTTING:

#### Note on cutting:

Lay out your pieces according to straight of grain as marked on the pattern pieces.

Some pieces will be cut on the fold, the corresponding edge will then be marked with a fold mark. Kindly pay attention to notes regarding type of fabric and quantity of required pieces on a block. For example, [ Main, Interfacing - cut 1+1 ] on a pattern piece means that you need to cut 1 piece as is and 1 mirrored piece from the main fabric as well as from interfacing.

Make sure to mark all notches and other design features such as pleats etc. from the pattern piece onto your fabric. When sewing the garment, pay attention to notches, they must match up.

\* The capital letters in brackets correspond to pattern blocks as seen in Online Fabric Estimator and in pattern blocks preview on the right.

## **INSTRUCTIONS:**

1. Apply fusible interfacing according to the Cutting instructions.

2. Sew Side Fronts to Center Front. Clip into the seam allowance along the curve. Serge the seams and press apart or towards the center. Treat as one piece (Front Bodice) in the future.

3. Sew Side Backs to Center Backs. Clip into the seam allowance along the curve. Serge the seams and press apart or towards the center. Treat as one piece (Back Bodice) in the future.

### **4. WAIST INSET.**

- Sew Front Waist Inset to Front Bodice matching notches. Serge and press towards inset.

- Treat the resulting piece as Front Bodice in the future.

- Sew Back Waist Insets to Back Bodices pairwise, matching notches. Serge and press towards inset.

- Treat the resulting pieces as Back Bodices in the future.

5. Sew a gathering stitch along the upper edge of the Front Skirt and gather fullness. The desired length is mentioned on the top of the pattern block.

6. Sew a gathering stitch along the upper edge of the Back Skirts and gather fullness. The desired length is mentioned on the top of the pattern block.

7. Sew Front Bodice to Front Skirt. Serge and press towards top. Treat as one Front piece in the future.

8. Sew Back Bodices to Back Skirts pairwise. Serge and press towards top. Treat as whole Back pieces in the future.

9. Serge center back edges separately.

### **INVISIBLE ZIPPER:**

- Mark the contour of the pieces on the RIGHT side of fabric using a removable chalk or marker. Alternatively,

---

press the seam allowances and use the fold line as the guidance.

- Open the zipper. Position the zipper onto the fabric, to position the zipper correctly into the fabric you will need to place the RIGHT side of the zip onto the RIGHT side of the fabric. With the teeth of the zip facing AWAY from the seam allowance (edge of the fabric).
- Position the teeth of the zip onto the drawn line, and position the clear zip stopper at the top of the zip on the horizontal starting line you drew previously (top edge of the fabric), pin, baste or tack zipper in place.
- At the sewing machine change the standard foot to the invisible zipper foot (if you don't have one, use standard zipper foot).
- Sew along the zip, gently pull the teeth open with your fingers. Stop when the foot touches the zipper pull at the end of the zip (you will not be able to sew any further than this). Back stitch.
- Repeat for the other side.
- Sew center back seam AFTER you have installed the zipper, stitch as closely as you can to the end of the zipper.
- Slipstitch the opening and press.

### **LAPPED ZIPPER:**

- Sew center back seam from marking down up to the vent corner if your pattern suggests a vent, or down to hem.
- Press the seam apart, pressing the slit for zipper at the same time.
- Baste the zipper opening.
- Lay the zipper face down on the wrong side of the dress. (The teeth will be touching the right side of the pressed-flat seam allowances.)
- Hold the zipper in place by connecting both sides of the zipper tape to the corresponding seam allowances using either pins, tape, or a machine baste.
- Stitch-rip a 2" (5 cm) opening in the basted seam to expose the zipper pull.
- Change your sewing machine's regular presser foot to a zipper foot.
- Sew a topstitch "U" around your zipper from the fabric right side, catching the zipper tape, avoiding the zipper teeth, and pivoting around the bottom zipper stop. (Any time you get to the zipper pull, drop your needle in the fabric, lift your presser foot, and slide the zipper pull out of the way through the stitch-ripped opening. Lower the presser foot and continue sewing.)

10. Sew shoulder seams. Serge and press towards back.

11. Sew shoulder seams of neckline facings. Press seam apart and serge. Serge outer edge of facings. Pin facing onto Shell right sides together, adjusting neckline edges. Fold the facing away all the way along EXCEPT for the area 5 mm from the edge of dress zipper and pin it to upper edge of garment. Fold seam allowances along zipper onto right side and pin to neckline on top of facings. Sew the neckline. Clip into curves, turn pieces right side out and press. Slip stitch facing to seam allowances of shoulder seam on Shell. Slipstitch facing to zipper tape.

12. Sew side seams. Serge and press towards back.

13. Sew shoulder (if not yet sewn) and side seams of armhole facings. Press seam apart and serge. Serge outer edge of facings. Pin facing onto Shell right sides together, adjusting armhole edges and matching markings. Sew the armhole in two steps - first one front, and then the back. Clip into curves, turn pieces right side out and press. Topstitch seam allowances onto facing.

14. Serge hem, turn under, press and topstitch or slip stitch as desired.

**TECHNICAL DRAWING:**

