

Recommendations on fabric: natural or mixed fabric suitable for dresses.

You will also need: fusible interfacing, bias tape, invisible zipper.

Seam allowances: on hem – 1.5 cm, other seams – 1.0 cm.

Note on seam allowances:

- If the pattern has double contour the seam allowances are included. They are 1 cm unless specified otherwise.
- If the pattern has single contour, the seam allowances are NOT included and need to be added when laying out the pattern.

Note on length of fabric:

Attention! The amount of fabric needed for your pattern is not included. It will depend on the selected pattern size, the width, and design of the fabric you plan to use. First, print all the paper patterns and lay them out at the width of fabric you plan to use (usually from 90 to 150 cm). Measure how much fabric you will need. Don't forget to account for pieces that need to be cut multiple times and pieces that are cut on the fold.



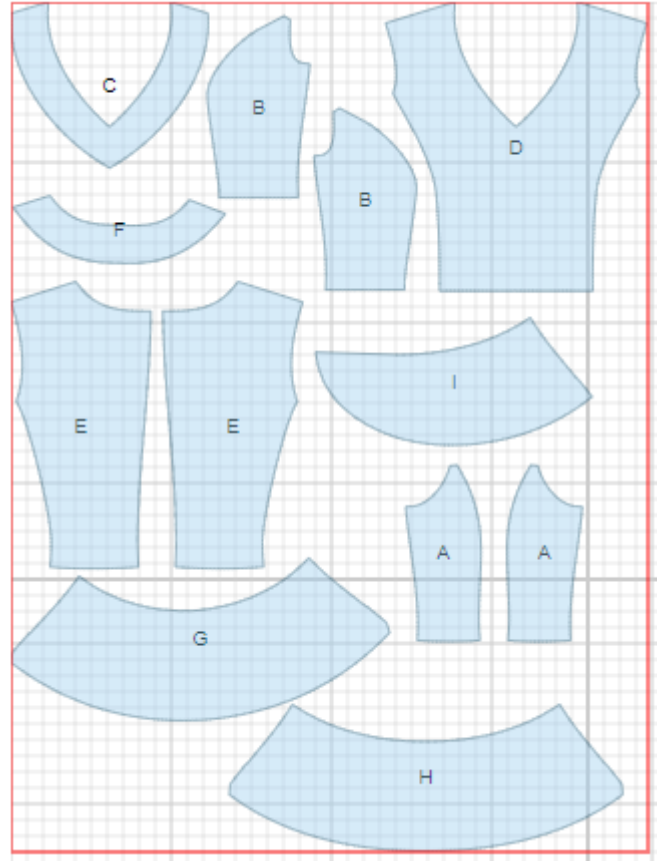
CUTTING:

Main fabric:

1. Side back – cut 2 (A)
2. Side front – cut 2 (B)
3. Front neck facing – cut 1 (C)
4. Center front – cut 1 (D)
5. Center back – cut 2 (E)
6. Back neck facing - cut 1 (F)
7. Lower back - cut 1 (G)
8. Lower front - cut 1 (H)
9. Peplum - cut 1 (I)

Fusible interfacing:

1. Front neck facing – cut 1 (C)
2. Back neck facing - cut 1 (F)



INSTRUCTIONS:

1. Apply fusible interfacing to front/back neck facings.
2. Sew side backs to center backs. Serge and press seams towards center. Sew center back seam. Serge and press seam towards left side seam. Sew lower back to back. Serge and press seam upwards.
3. Sew side fronts to center front. Serge and press seams towards center.
4. Serge lower edge of peplum. Turn under, press and topstitch. Lay peplum over lower front and fasten on upper and side edges. Sew lower front to upper front. Serge and press seam upwards.
5. Sew shoulder seams. Serge and press seams towards back.
6. Serge separately left side edges. Sew left side seam from zipper mark down to hem. Press seam open. Install zipper. Sew right side seam. Serge and press seam towards back.
7. Sew shoulder seams of facings. Press seams open. Serge outer edge. Pin facing to neckline right sides together and sew. Trim seam. Turn facing to inside. Press and tack facing to shoulder seams and to center back seam.
8. Cut a bias tape of 4 cm wide. Length is equal to armhole length + 4 cm. Fold bias tape in half lengthwise right side out and press. Pin bias tape to armhole from right side, leaving tails, and sew. Turn bias tape to inside, clip seam, and topstitch along the fold onto main piece. Press.
9. Serge lower edge of the top. Turn under, press and topstitch.

Wear the top with a belt if desired.

TECHNICAL DRAWING:

