

S3101 Sewist 3101

Recommended fabrics: well draping medium weight fabrics.

Seam allowances: all seams 3/8 inch. Seam along center back - 5/8 inch. Seam allowance for skirt hem - 1 inch.

You will also need: fusible interfacing, button or 2 hook and eyes, zipper.

Note on seam allowances:

- If the pattern has double contour the seam allowances are included.

- If the pattern has single contour, the seam allowances are NOT included and need to be added when laying out the pattern.

Note on length of fabric:

Attention! The amount of fabric needed for your pattern is not included. It will depend on the selected pattern size, the width, and design of the fabric you plan to use. You are welcome to use the Online Fabric Estimator to make calculations. Alternatively, print all the paper patterns and lay them out at the width of fabric you plan to use (usually from 90 to 150 cm). Measure how much fabric you will need. Don't forget to account for pieces that need to be cut multiple times and pieces that are cut on the fold.



PRINTING:

Please use Adobe Reader software to open your PDF pattern. You can get Adobe Reader free of charge at this link - <https://get.adobe.com/reader/>.

Make sure you print your patterns at actual size (100%% scale or None) and on single sides of plain A4 paper. Verify that the print out size is to the correct scale by measuring the test square on the first page. The upper edge of the square features a centimeter scale, and the bottom edge features an inch scale.

Trim top and/or right margin of the pages where you see the scissors symbols. In the center of each page, the number of row and column is printed, separated by / sign. Construct layout pages according to these marks (for example, page marked 2/3 is in the second row and in the third column). Align pages using margins and tape or glue together.

CUTTING:

Note on cutting:

Lay out your pieces according to straight of grain as marked on the pattern pieces.

Some pieces will be cut on the fold, the corresponding edge will then be marked with a fold mark. Kindly pay attention to notes regarding type of fabric and quantity of required pieces on a block. For example, [Main, Interfacing - cut 1+1] on a pattern piece means that you need to cut 1 piece as is and 1 mirrored piece from the main fabric as well as from interfacing.

Make sure to mark all notches and other design features such as pleats etc. from the pattern piece onto your fabric. When sewing the garment, pay attention to notches, they must match up.

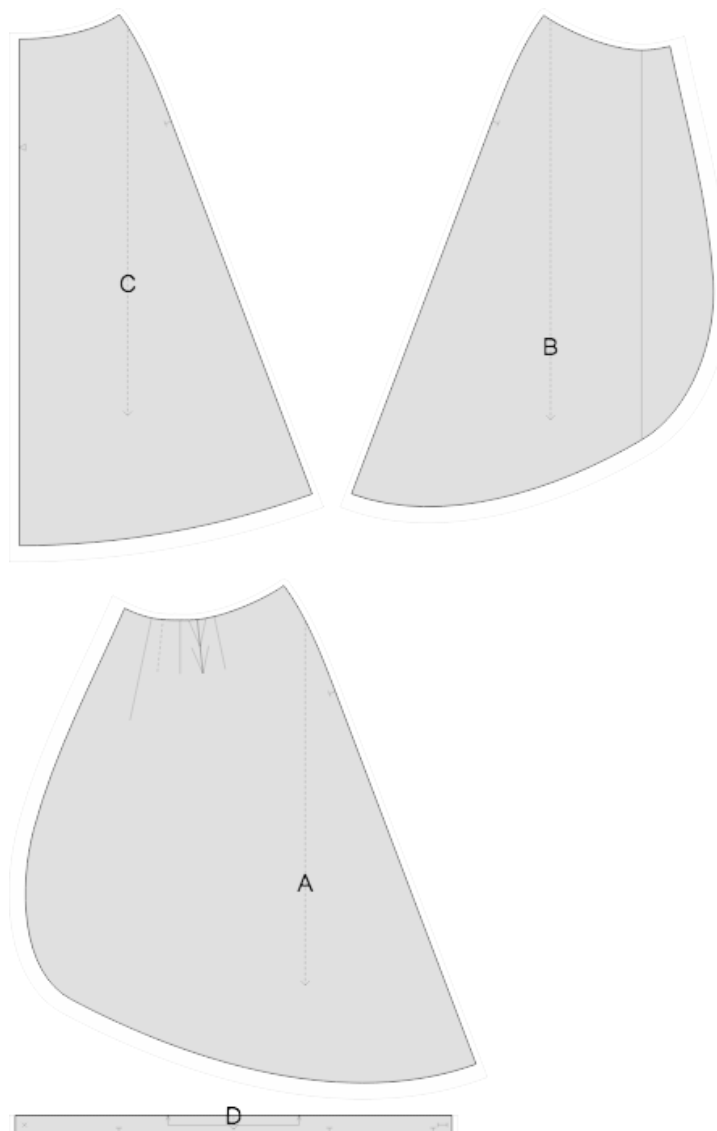
Self

- (A) Front Skirt Right - cut 1
- (B) Front Skirt Left - cut 1
- (C) Back Skirt - cut 1 +1
- (D) Skirt Waistband - cut 1 on fold

Interfacing

- (D) Skirt Waistband - cut 1 on fold

* The capital letters in brackets correspond to pattern blocks as seen in Online Fabric Estimator and in pattern blocks preview on the right.



INSTRUCTIONS:

- Apply fusible interfacing to waistband.
- Serge center back edges separately. Sew center back seam from notch for zipper down to hem. Press seam open, pressing the slit for zipper at the same time.
- Sew in a lapped zipper according to zipper instructions that come with the packet.
- Sew side seams matching notches. Serge and press towards back.
- Hem skirt by hand or machine as desired.
- Make pleats on front skirts and baste them down for 10-15 cm so that the folds stay in place when you process the piece later.

- Lay right front skirt on top of the left front skirt, right sides of both skirts facing you. Match the center front lines and baste together along upper raw edge. Treat as one front piece in the future.
- Sew waistband to waistline edge, right sides together, matching notches. The right seam allowance should line up with the lapped zipper and the left side should extend enough so that the waistband can overlap (see markings on waistband). Press the seam allowance of the unstitched long edge under.
- Fold waistband along center line at the ends, right sides together, and sew short ends. Trim corners. Pull corners out so they are square.
- Press seam toward waistband. Trim and grade seams as needed. Press along center line so that waistband-facing is toward inside and turned edge meets up with the edge of the seamline. Slip-stitch in place. Stitch in the ditch along edges of the outside waistband if desired.
- Make buttonhole on the left side of the waistband and sew button on the right waistband. You may also opt for hook and eyes if you don't feel like making the buttonhole.

TECHNICAL DRAWING:

