

Recommendations on fabric: natural or mixed silk fabric.

You will also need: fusible interfacing.

Seam allowances: hems – 3.0 cm, upper edge of pocket - 4.0 cm, other seams – 1.0 cm.

Note on seam allowances:

- If the pattern has double contour the seam allowances are included. They are 1 cm unless specified otherwise.

- If the pattern has single contour, the seam allowances are NOT included and need to be added when laying out the pattern.

Note on length of fabric:

Attention! The amount of fabric needed for your pattern is not included. It will depend on the selected pattern size, the width, and design of the fabric you plan to use. First, print all the paper patterns and lay them out at the width of fabric you plan to use (usually from 90 to 150 cm). Measure how much fabric you will need. Don't forget to account for pieces that need to be cut multiple times and pieces that are cut on the fold.



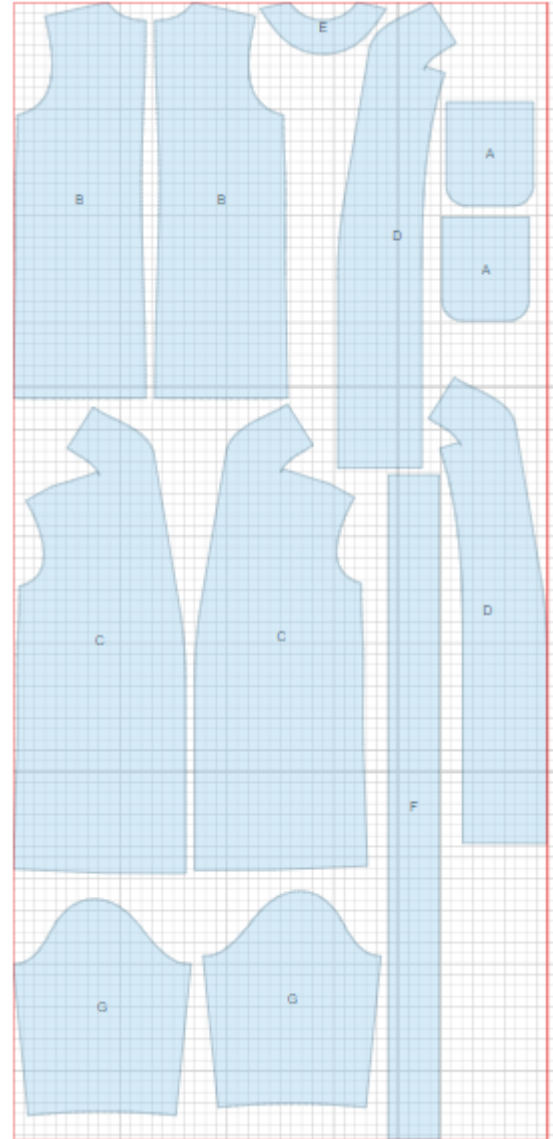
CUTTING:

Main fabric:

1. Back - cut 2 (B)
2. Front - cut 2 (C)
3. Front facing - cut 2 (D)
4. Sleeve - cut 2 (G)
5. Back neck facing - cut 1 (E)
6. Belt - cut 1 (F)

Fusible interfacing:

1. Front facing - cut 2 (D)
2. Back neck facing - cut 1 (E)



INSTRUCTIONS:

1. Sew center back seam. Serge and press seam towards left side seam.
2. Sew darts on fronts, press bulk towards center.
3. Turn upper edge of pocket under at 1 cm, then again at 3 cm and topstitch. Serge side and lower pocket edges, press under, place on fronts and topstitch.
4. Sew shoulder seams. Clip in corners. Serge and press towards back. Sew collar seam and press open. Sew collar into neckline. Press seam towards collar.
5. Sew shoulder seams of facings, clip seam in corners. Press seam open. Sew collar into neckline. Press seam towards collar. Serge outer edge.
6. Place front facing on front right sides together and sew along collar fall, front band and lower edge. Fasten together collar connecting seams.
7. Sew sleeves into open armholes matching notches. Serge and press seams. Sew side and sleeve seams with one continuous stitch. Serge and press seams towards back.
8. Serge hem of dress and lower edge of sleeve. Turn under at 1 cm, then again at 2 cm, and topstitch.
9. Fold belt in half lengthwise right sides together and sew long and one short sides. Turn belt right side out. Turn open edges under and topstitch at 0.7 cm from edge along belt perimeter.

TECHNICAL DRAWING:

