

Recommendations on fabric: natural/mixed fabric suitable for blouses.

You will also need: fusible interfacing, invisible zipper.

Seam allowances: 1 cm for all seams, 2.0 cm for hem.

**Note on seam allowances:**

- If the pattern has double contour the seam allowances are included. They are 1 cm unless specified otherwise.
- If the pattern has single contour, the seam allowances are NOT included and need to be added when laying out the pattern.

**Note on length of fabric:**

*Attention! The amount of fabric needed for your pattern is not included. It will depend on the selected pattern size, the width, and design of the fabric you plan to use. First, print all the paper patterns and lay them out at the width of fabric you plan to use (usually from 90 to 150 cm). Measure how much fabric you will need. Don't forget to account for pieces that need to be cut multiple times and pieces that are cut on the fold.*



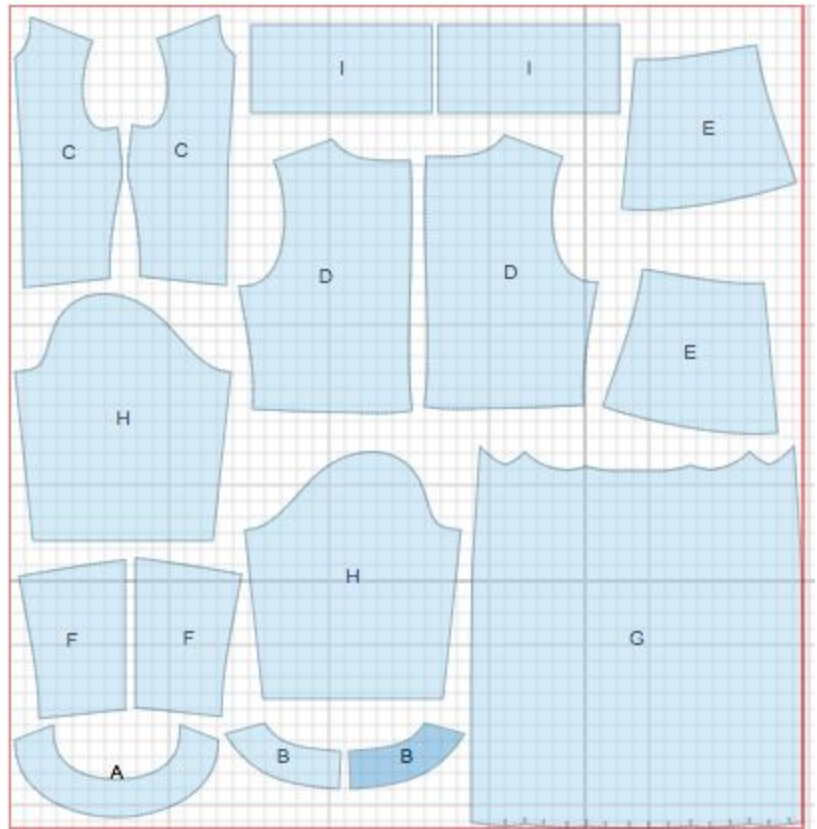
## CUTTING:

### Main fabric:

1. Upper back - cut 2 ( )
2. Lower back - cut 2 ( )
3. Upper front - cut 1
4. Lower front - cut 2
5. Front inset - cut 1
6. Sleeve - cut 2
7. Cuff - cut 2
8. Front neckline facing - cut 1
9. Back neckline facing - cut 2

### Fusible interfacing:

1. Front neckline facing - cut 1
2. Back neckline facing - cut 2



## INSTRUCTIONS:

1. Apply fusible interfacing to front neckline facing and back neckline facings.
2. Sew waist darts on backs, press bulk towards center. Sew lower backs to upper backs, press seams towards top and serge.
3. Serge separately center back edges. Sew center back seam from zipper mark down to hem. Press seam open. Install zipper.
4. Sew bust darts on upper fronts, press bulk towards top. Sew lower back to upper back, press seams towards top and serge.
5. Sew princess seams on front, press seams towards center and serge. Make and baste the first pleat on front inset according to the technical drawing and the markings, so that the fold is on the right side. Topstitch pleat from the right side, close to fold line, from neckline up to waist level. Make other pleats in the same way.
6. Sew side and shoulder seams, press seams towards back and serge.

7. Sew shoulder seams of neckline facings. Press seams open. Serge outer edge of neckline facing. Place neckline facing onto neckline from the right side and sew neckline. Grade seam, turn right side out and press. Slip stitch facings to shoulder seams and tape of zipper.
8. Sew sleeve seam. Serge and press seam towards back. Sew sleeves into armholes matching notches. Serge and press seams.
9. Sew cuff into ring. Press seam open. Fold cuff in half longwise right side out and press. Sew outer edge of cuff to lower edge of sleeve, press seam towards top. Turn inner cuff edge under and stitch in the ditch.
10. Serge hem of blouse and lower edge of sleeves. Turn under, press and topstitch.

**TECHNICAL DRAWING:**

