

Recommendations on fabric: natural or mixed, low stretch knit fabric.

You will also need: stretchy fusible interfacing, elastic, cord for waistband, 2 eyelets.

Seam allowances: hem – 2.0 cm; all other seams - 1.0 cm.

Note on seam allowances:

- If the pattern has double contour the seam allowances are included. They are 1 cm unless specified otherwise.
- If the pattern has single contour, the seam allowances are NOT included and need to be added when laying out the pattern.

Note on length of fabric:

Attention! The amount of fabric needed for your pattern is not included. It will depend on the selected pattern size, the width, and design of the fabric you plan to use. First, print all the paper patterns and lay them out at the width of fabric you plan to use (usually from 90 to 150 cm). Measure how much fabric you will need. Don't forget to account for pieces that need to be cut multiple times and pieces that are cut on the fold.



CUTTING:

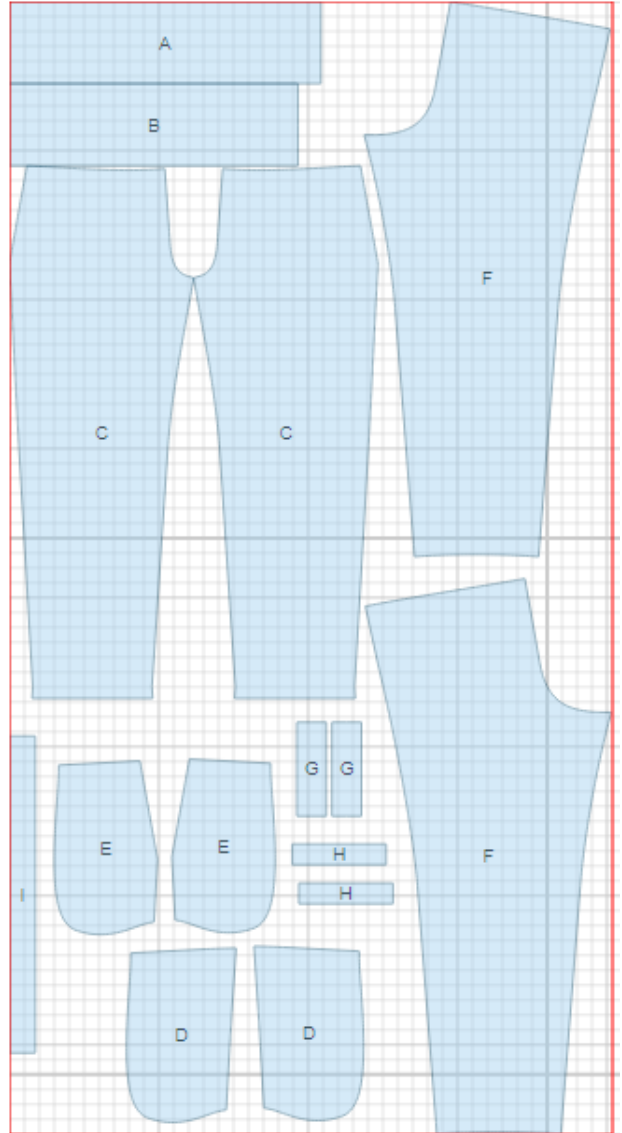
Main fabric:

1. Back waistband - cut 1 (A)
2. Front waistband — cut 1 (B)
3. Front — cut 2 (C)
4. Side — cut 2 (D)
5. Pocket sacking — cut 2 (E)
6. Back — cut 2 (F)
7. Off-set welt - cut 2 (G)
8. Underlay piece - cut 2 (H)
9. Belt loop - cut 1 (I)

Fusible interfacing:

1. Off-set welt - cut 2 (G)

Advice: Knit fabric pieces are sewn together with special elastic or narrow zig-zag stitch. Seam allowance on hem is stitched with twin needles to save stretchiness. Pieces can also be sewn together with 3 or 4 – thread serger. When serging, cut seam allowances to 0.6 – 0.8 cm.



INSTRUCTIONS:

1. Pin sacking to front and sew pocket opening on a lockstitch machine. Clip seam on curves, turn sacking to inside and topstitch seam on sacking with 0.1 cm stitch. Press.
2. Pin front on side piece according to marking. Sew sacking to side piece, serge seam. Make and fasten pleats according to marking (folds are directed towards side edges). Pin sacking to front on upper and side edges.
3. Mark back pockets location. Apply fusible interfacing to pocket opening. Fold off-set welt in half lengthwise wrong sides together. Sew welt to back on lower line of pocket marking. Sew underlay piece to back on upper line of pocket marking. End short lines of marking. Check stitches from inside - they must be parallel. Cut pocket opening. Make cuts to corners at 1 - 1.5 cm from ends. Turn welt and underlay piece to inside through the pocket opening. Adjust ends of welt so that fold and underlay piece connecting seam were on one line. Fasten ends of pockets from inside with double back stitch. Topstitch off-set welt onto underlay piece on connecting seam.
4. Sew center back seam, serge and press seam towards left side. Sew center front seam, serge and press seam towards left side.
5. Sew side seams. Serge and press seams towards back. Sew inner leg seams. Serge and press towards back.
6. Install two eyelets for cord on front waistband. Sew waistbands together into ring. Sew elastic into ring. Fold and press waistband in half lengthwise wrong sides together. Mark lines for elastic on back waistband and topstitch. Set elastic into waistband, fasten in side seams. Thread the cord, and fasten in side seams. Sew waistband to trousers, serge seam.
7. Serge bottom edge of trousers, turn under, press and topstitch.
8. Serge one long edge of belt loop. Fold loop in three layers and topstitch on long sides. Cut loop into 6 pieces. Topstitch belt loops on waistband according to technical drawing.

TECHNICAL DRAWING:

