

Recommendations on fabric: natural/mixed fabric suitable for blouses.

You will also need: fusible interfacing.

Seam allowances: 1 cm for all seams, 2.0 cm for hem.

Note on seam allowances:

- If the pattern has double contour the seam allowances are included. They are 1 cm unless specified otherwise.

- If the pattern has single contour, the seam allowances are NOT included and need to be added when laying out the pattern.

Note on length of fabric:

Attention! The amount of fabric needed for your pattern is not included. It will depend on the selected pattern size, the width, and design of the fabric you plan to use. First, print all the paper patterns and lay them out at the width of fabric you plan to use (usually from 90 to 150 cm). Measure how much fabric you will need. Don't forget to account for pieces that need to be cut multiple times and pieces that are cut on the fold.



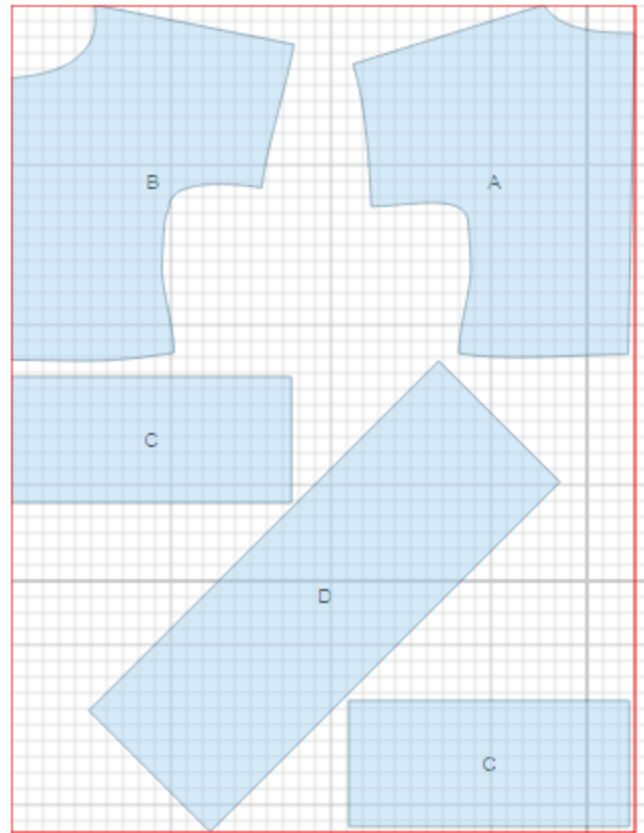
CUTTING:

Main fabric:

1. Back - cut 1 on fold (A)
2. Front – cut 1 on fold (B)
3. Cuff - cut 2 (C)
4. Collar - cut 1 (D)

Fusible interfacing:

1. Cuff - cut 2 (C)
2. Collar - cut 1 (D)



INSTRUCTIONS:

1. Apply fusible interfacing to listed pieces.
2. Sew darts on front. Press bulk upwards.
3. Sew shoulder and side seams. Serge and press seams towards back.
4. Fold collar in half lengthwise right sides together and sew short ends. Turn collar right side out and press. Lay corners one over another matching notches. Pin collar to neckline from wrong side and sew. Serge seam. Turn collar to outside covering connecting seam.
5. Sew cinto ring. Press seam open. Sew outer part of cuff to sleeve. Turn edge of inner cuff under and topstitch into outer cuff connecting seam.
6. Turn hem of blouse under twice at 1 cm, and topstitch.

TECHNICAL DRAWING:

