

Recommendations on fabric: natural/mixed fabric suitable for dresses.

You will also need: fusible interfacing; invisible zipper, lining.

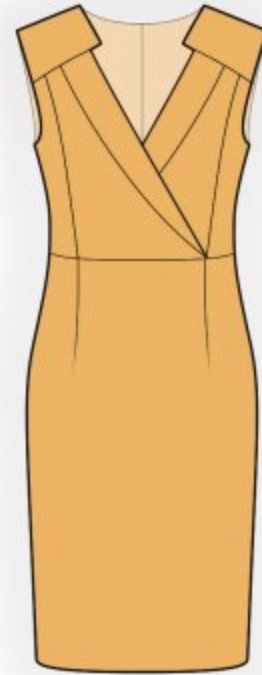
Seam allowances: 1 cm for all seams, 2.0 cm for hem, 6 cm for vent edge.

Note on seam allowances:

- If the pattern has double contour the seam allowances are included. They are 1 cm unless specified otherwise.
- If the pattern has single contour, the seam allowances are NOT included and need to be added when laying out the pattern.

Note on length of fabric:

Attention! The amount of fabric needed for your pattern is not included. It will depend on the selected pattern size, the width, and design of the fabric you plan to use. First, print all the paper patterns and lay them out at the width of fabric you plan to use (usually from 90 to 150 cm). Measure how much fabric you will need. Don't forget to account for pieces that need to be cut multiple times and pieces that are cut on the fold.



CUTTING:

Main fabric:

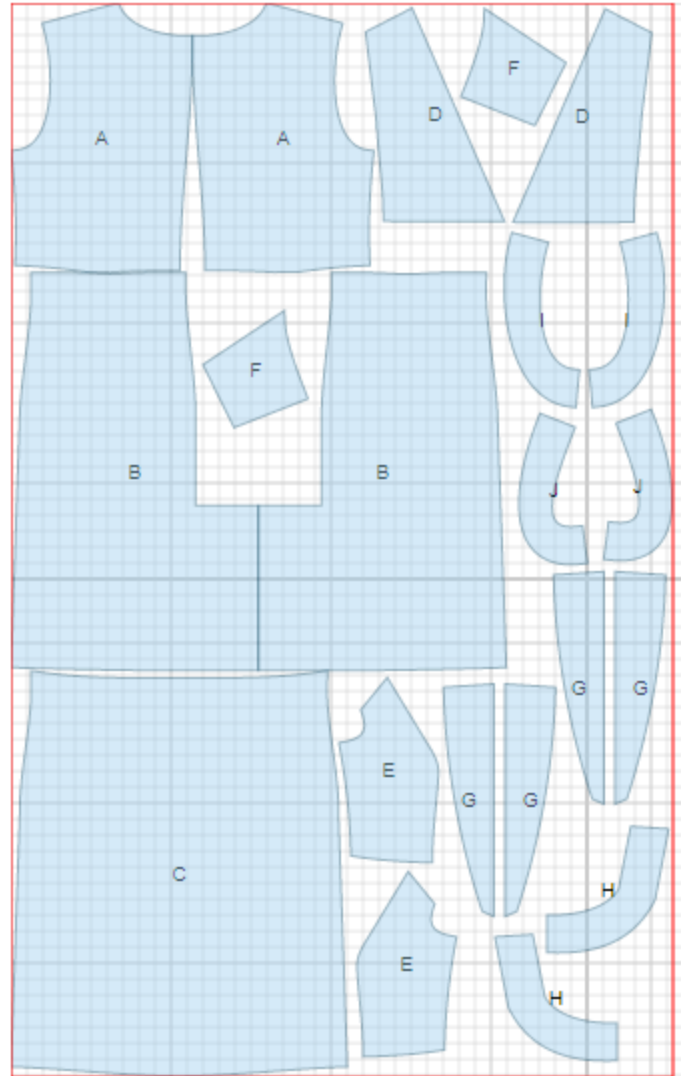
1. Upper back - cut 2 (A)
2. Lower back – cut 2 (B)
3. Lower front - cut 1 (C)
4. Center upper front - cut 2 (D)
5. Side upper front - cut 2 (E)
6. Front yoke - cut 2 (F)
7. Lapel - cut 4 (G)
8. Neck facing - cut 2 (H)
9. Back armhole facing - cut 2 (I)
10. Front armhole facing - cut 2 (J)

Lining:

1. Center upper front - cut 2 (D)

Fusible interfacing:

1. Lapel - cut 2 (G)
2. Neck facing - cut 2 (H)
3. Back armhole facing - cut 2 (I)
4. Front armhole facing - cut 2 (J)



INSTRUCTIONS:

1. Apply fusible interfacing to listed pieces.
2. Sew darts on upper and lower backs. Press bulk towards center. Sew darts on lower front, press bulk towards center.
3. Sew lower back to upper back. Serge and press seam upwards.
4. On left lower back, along vertical vent edge, cut off 5 cm. Apply fusible interfacing to wrong side of the vent on both back pieces. On right side mark center seam line (vent fold-line). Press left side along vent fold line. On right side, press seam allowance to wrong side of vent (6 cm). Match backs on center seam and fasten on upper edge of vent. Serge center back seam separately on each side. Serge vent seam allowances. Sew center back seam from upper edge to vent corner. Trim corner of vent seam allowance on right side. Press center seam open, press vent allowances and fasten them on right side with machine stitch. Install zipper.
5. Place lapels right sides together and sew outer edge. Turn lapel right side out, straighten and press.
6. Place upper center front and its lining piece right sides together, insert lapel between them and sew center seam. Turn lining to inside, straighten and press. Fasten lining to front on edges and then treat as one piece. Fasten lapel to front on upper edge.
7. Sew side fronts to center fronts. Serge and press seams towards center.
8. Sew yoke to upper front (yoke is longer than front), serge and press seam towards yoke. Lay right front over left front and fasten on lower edge.
9. Sew lower front to upper front. Serge and press seam upwards.
10. Sew shoulder and side seams. Serge and press seams towards back.
11. Serge outer edge of neck facing. Pin facing to dress right sides together and sew neckline and yoke section to mark. Clip seam on curves, trim in corners. Turn facing to inside, straighten and press. Tack facing to shoulder seams and center back seam.
12. Sew shoulder and side seams of armhole facings, press open. Serge outer edge. Pin facing to armhole right sides together and sew. Clip on curves. Turn facing to inside, straighten and press. Tack facing to shoulder and side seams.

13. Serge hem of dress, turn under, press and slipstitch.

TECHNICAL DRAWING:

