

Recommendations on fabric: natural/mixed fabric suitable for dresses.

You will also need: fusible interfacing; two invisible hooks with eyelets.

Seam allowances: 1 cm for all seams, 3.0 cm for upper edge of pocket.

Note on seam allowances:

- If the pattern has double contour the seam allowances are included. They are 1 cm unless specified otherwise.
- If the pattern has single contour, the seam allowances are NOT included and need to be added when laying out the pattern.

Note on length of fabric:

Attention! The amount of fabric needed for your pattern is not included. It will depend on the selected pattern size, the width, and design of the fabric you plan to use. First, print all the paper patterns and lay them out at the width of fabric you plan to use (usually from 90 to 150 cm). Measure how much fabric you will need. Don't forget to account for pieces that need to be cut multiple times and pieces that are cut on the fold.



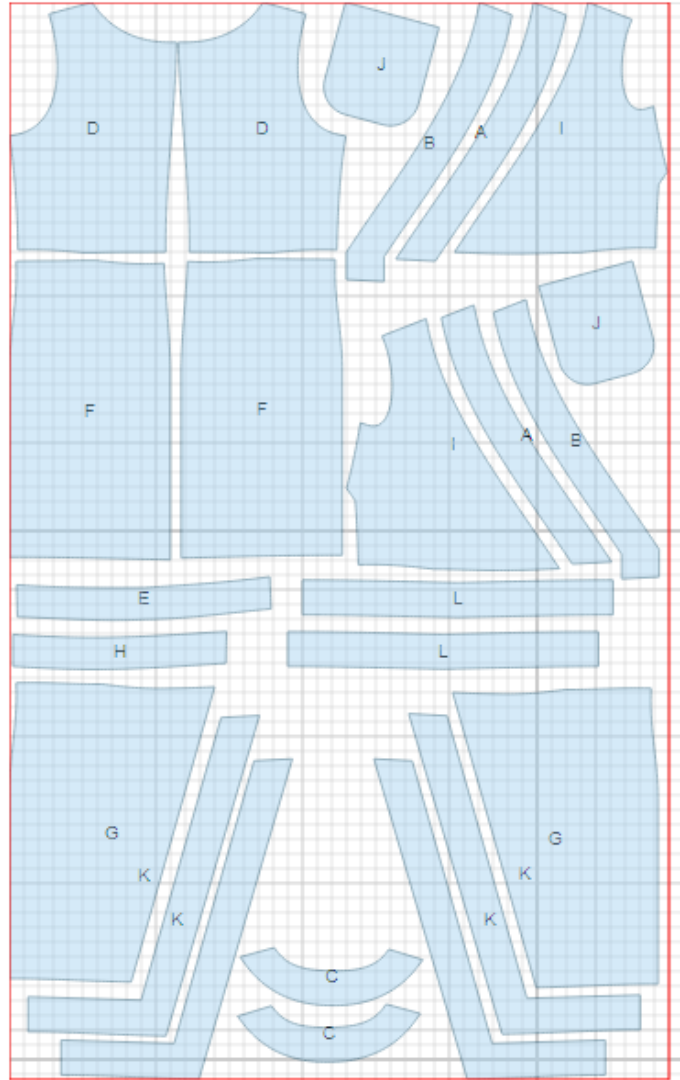
CUTTING:

Main fabric:

1. Upper front placket - cut 2 (A)
2. Inner placket of upper front – cut 2 (B)
3. Back neck facing - cut 2 (C)
4. Upper back - cut 2 (D)
5. Back waistband - cut 1 (E)
6. Lower back - cut 2 (F)
7. Lower front - cut 2 (G)
8. Front waistband - cut 2 (H)
9. Upper front - cut 2 (I)
10. Pocket - cut 2 (J)
11. Lower front placket - cut 4 (K)
12. Lower back placket - cut 2 (L)

Fusible interfacing:

1. Inner placket of upper front – cut 2 (B)
2. Back neck facing - cut 1 (C)
3. Lower front placket - cut 2 (K)
4. Lower back placket - cut 1 (L)



INSTRUCTIONS:

1. Apply fusible interfacing to listed pieces.
2. Sew bust darts on fronts. Press bulk upwards. Sew waist darts on fronts and backs. Press bulk towards center.
3. Sew center back seam on upper and lower pieces. Serge and press seam towards left side seam.
4. Sew back neck facing to back. Press seam towards facing. Sew lower back placket to lower back, press seam towards placket.
5. Sew back waistband to upper back. Serge and press seam towards waistband. Sew lower back to waistband. Serge and press seam towards waistband.
6. Serge upper edge of pocket, turn under, press and topstitch. Serge pocket edges, turn under and press. Pin pockets to fronts according to marking and topstitch.
7. Sew upper front placket to front, press seam towards placket. Sew lower front placket to lower front trimming in corner. Press seam towards placket.
8. Sew front waistband to upper front. Serge and press seam towards waistband. Sew lower front to waistband. Serge and press seam towards waistband.
9. Sew shoulder and side seams. Serge and press seams towards back.
10. Sew inner front plackets and back neck facing into ring, press seams open. Pin inner placket to dress right sides together and sew round neckline, center front edges and lower edge. Clip seam on curves, trim in corners. Turn right side out, straighten and press. Turn inner placket edge under and topstitch into outer placket connecting seam.
11. Cut a bias tape 4 cm wide. Length is equal to armhole length + 5 cm. Fold bias tape in half lengthwise right side out and press. Pin bias tape to armhole from right side leaving tails, and sew. Trim seams. Turn bias tape to inside and topstitch along the fold. Press.
12. Sew a hook to right front waistband from wrong side. Sew an eyelet according to hook. Sew a hook and eyelet to left waistband.

TECHNICAL DRAWING:

