

Recommendations on fabric: natural/mixed well draping fabric suitable for blouses.

You will also need: fusible interfacing, invisible zipper.

Seam allowances: 1 cm for all seams, 2.0 cm for hem, 1.5 cm for lower edge of sleeve.

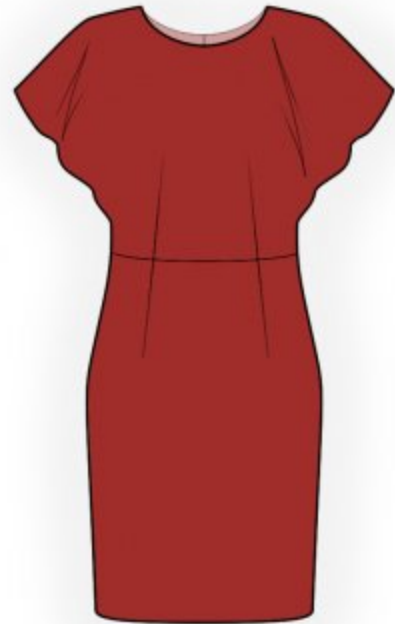
**Note on seam allowances:**

- If the pattern has double contour the seam allowances are included. They are 1 cm unless specified otherwise.

- If the pattern has single contour, the seam allowances are NOT included and need to be added when laying out the pattern.

**Note on length of fabric:**

*Attention! The amount of fabric needed for your pattern is not included. It will depend on the selected pattern size, the width, and design of the fabric you plan to use. First, print all the paper patterns and lay them out at the width of fabric you plan to use (usually from 90 to 150 cm). Measure how much fabric you will need. Don't forget to account for pieces that need to be cut multiple times and pieces that are cut on the fold.*



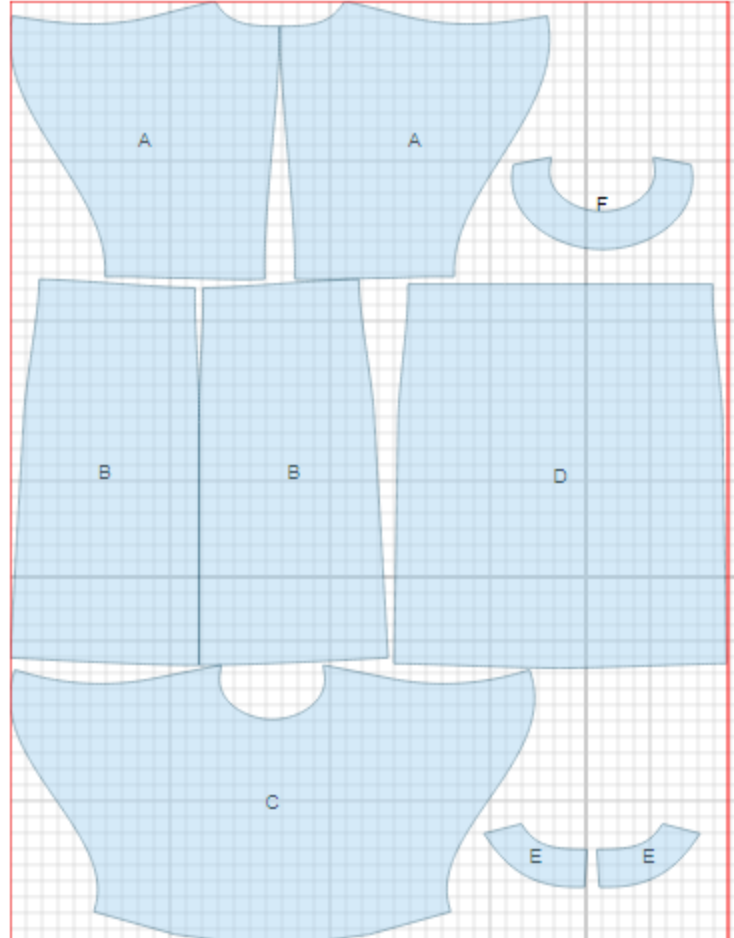
## CUTTING:

### Main fabric:

1. Upper back - cut 2 (A)
2. Lower back – cut 2 (B)
3. Upper front - cut 1 (C)
4. Upper back -cut 1 (D)
5. Back neck facing - cut 2 (E)
6. Front neck facing - cut 1 (F)

### Fusible interfacing:

1. Back neck facing - cut 2 (E)
2. Front neck facing -cut 1 (F)



---

**INSTRUCTIONS:**

1. Apply fusible interfacing to neck facings.
2. Sew darts on front and backs. Press bulk towards center.
3. Sew shoulder seams. Serge and press seams towards back. Serge sleeve edge, turn under and topstitch.
4. Sew lower backs to upper backs (upper piece edge is shorter than lower piece edge at side seam width). Serge and press seams upwards.
5. Serge center back edges separately. Sew center back seam from zipper mark down to slit mark. Press seam open. Install zipper. Topstitch seam along slit at 0.2 cm from the edge.
6. Sew lower front to upper front (upper piece edge is shorter than lower piece edge at side seam width). Serge and press seam upwards.
7. Sew side seams. Serge and press seams towards back.
8. Sew shoulder seams of facings and press open. Serge outer edge. Pin facing to blouse right sides together and sew neckline. Clip seam on curves. Turn facing to inside, straighten and press. Tgs to shoulder seams and to zipper tape.
9. Serge hem of dress, turn under, press and topstitch.

TECHNICAL DRAWING:

