

Recommendations on fabric: natural/mixed fabric suitable for blouses.

You will also need: fusible interfacing, 4 buttons.

Seam allowances: 1 cm for all seams, 2.0 cm for hem and lower edge of sleeve.

**Note on seam allowances:**

- If the pattern has double contour the seam allowances are included. They are 1 cm unless specified otherwise.
- If the pattern has single contour, the seam allowances are NOT included and need to be added when laying out the pattern.

**Note on length of fabric:**

*Attention! The amount of fabric needed for your pattern is not included. It will depend on the selected pattern size, the width, and design of the fabric you plan to use. First, print all the paper patterns and lay them out at the width of fabric you plan to use (usually from 90 to 150 cm). Measure how much fabric you will need. Don't forget to account for pieces that need to be cut multiple times and pieces that are cut on the fold.*



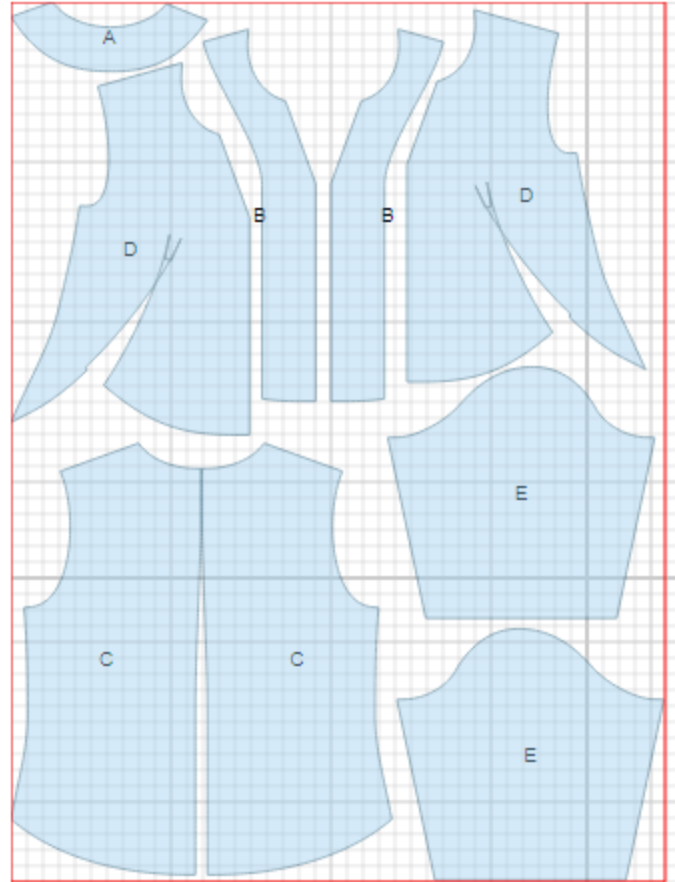
## CUTTING:

### Main fabric:

1. Back neck facing - cut 1 (A)
2. Front facing – cut 2 (B)
3. Back - cut 2 (C)
4. Front -cut 2 (D)
5. Sleeve - cut 2 (E)

### Fusible interfacing:

1. Back neck facing - cut 1 (A)
2. Front facing – cut 2 (B)



---

**INSTRUCTIONS:**

1. Apply fusible interfacing to listed pieces.
2. Sew center back seam. Serge and press seam towards left side seam.
3. Sew shoulder and side seams. Serge and press seams towards back.
4. Sew shoulder seams of front/back facings. Press seam open. Serge outer edge. Pin facing to front right sides together and sew along front edge and neckline. Trim seam. Turn facing to inside. Press. Serge lower edge of center front, turn under and topstitch.
5. Sew darts on front. Serge dart seam and lower edge of front/back with one continuous stitch.
6. Sew sleeve seam. Serge and press seam towards back.
7. Sew sleeves into armholes adjusting ease on sleeve cap. Serge and press seams.
8. Turn lower edge of blouse under and topstitch.
9. Make buttonholes on right front. Sew buttons on left front.

TECHNICAL DRAWING:

