

Recommendations on fabric: natural/mixed fabric suitable for blouses.

You will also need: fusible interfacing.

Seam allowances: 1 cm for all seams, 3.0 cm for hem.

**Note on seam allowances:**

- If the pattern has double contour the seam allowances are included. They are 1 cm unless specified otherwise.
- If the pattern has single contour, the seam allowances are NOT included and need to be added when laying out the pattern.

**Note on length of fabric:**

*Attention! The amount of fabric needed for your pattern is not included. It will depend on the selected pattern size, the width, and design of the fabric you plan to use. First, print all the paper patterns and lay them out at the width of fabric you plan to use (usually from 90 to 150 cm). Measure how much fabric you will need. Don't forget to account for pieces that need to be cut multiple times and pieces that are cut on the fold.*



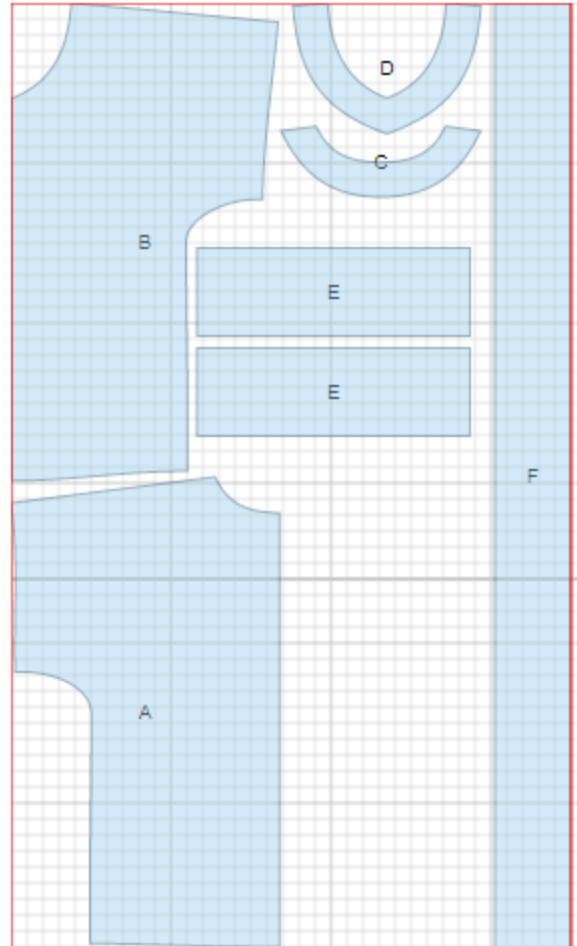
## CUTTING:

### Main fabric:

1. Back - cut 1 on fold (A)
2. Front – cut 1 on fold (B)
3. Back neck facing - cut 1 (C)
4. Front neck facing -cut 1 (D)
5. Cuff - cut 2 (E)
6. Belt - cut 1 (F)

### Fusible interfacing:

1. Back neck facing - cut 1 (C)
2. Front neck facing -cut 1 (D)



---

**INSTRUCTIONS:**

1. Apply fusible interfacing to neck facings.
2. Sew shoulder seams. Serge and press seams towards back.
3. Make and fasten pleats on sleeves as marked.
4. Sew side and sleeve seam with one continuous stitch. Serge and press seams towards back.
5. Sew cuff into ring. Press seam open. Fold cuff in half right side out and press. Sew outer cuff to sleeve. Turn inner cuff edge under and topstitch into connecting seam.
6. Sew shoulder seams of facings and press open. Serge outer edge. Pin facing to blouse right sides together and sew neckline. Trim seam in corners, clip on curves. Turn facing to inside, straighten and press. Tgs to shoulder seams.
7. Turn hem of blouse under at 1 cm, press, then turn under at 2 cm, press and topstich.
8. Fold belt in half lengthwise right sides together and sew ends and long edge leaving an opening in long side for turnup. Trim seams in corners, turn belt right side out, straighten and press. Sew opening closed.

TECHNICAL DRAWING:

