

Recommendations on fabric: natural/mixed fabric suitable for dresses.

You will also need: fusible interfacing; invisible zipper.

Seam allowances: 1 cm for all seams, 3.0 cm for hem, 6 cm for vent edge.

Note on seam allowances:

- If the pattern has double contour the seam allowances are included. They are 1 cm unless specified otherwise.
- If the pattern has single contour, the seam allowances are NOT included and need to be added when laying out the pattern.

Note on length of fabric:

Attention! The amount of fabric needed for your pattern is not included. It will depend on the selected pattern size, the width, and design of the fabric you plan to use. First, print all the paper patterns and lay them out at the width of fabric you plan to use (usually from 90 to 150 cm). Measure how much fabric you will need. Don't forget to account for pieces that need to be cut multiple times and pieces that are cut on the fold.



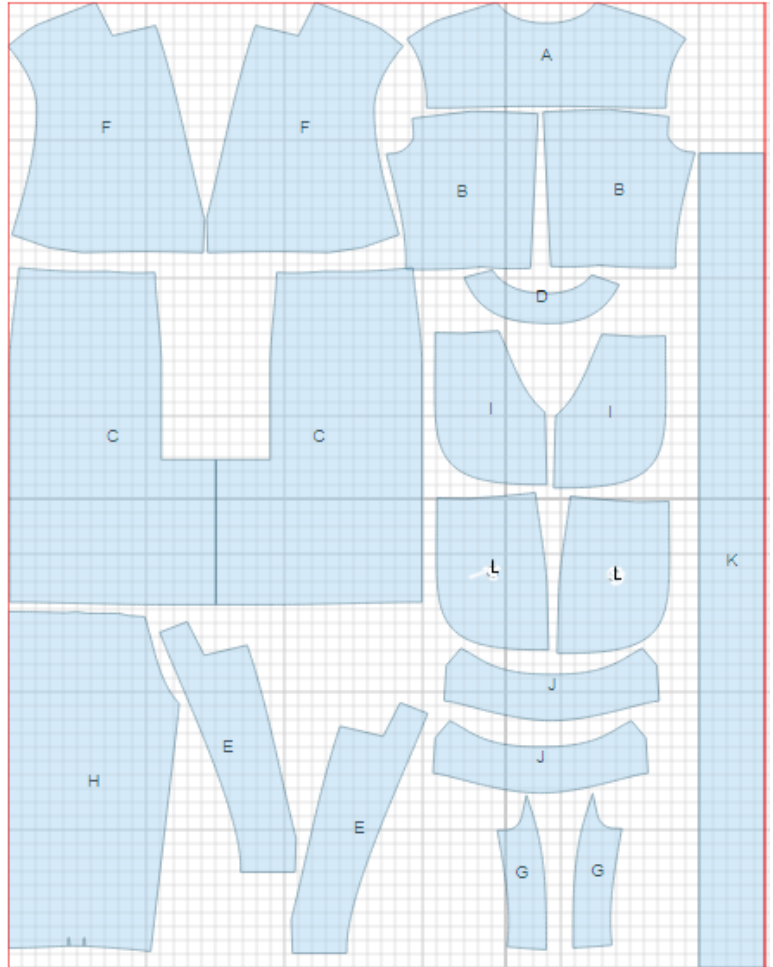
CUTTING:

Main fabric:

1. Back yoke - cut 1 (A)
2. Center back – cut 2 (B)
3. Lower back - cut 2 (C)
4. Back neck facing - cut 1 (D)
5. Front facing - cut 2 (E)
6. Center front - cut 2 (F)
7. Upper side front - cut 2 (G)
8. Lower front - cut 1 on fold (H)
9. Pocket bag - cut 2 (I)
10. Collar - cut 2 (J)
11. Belt - cut 1 (K)
12. Lower side front - cut 2 (L)

Fusible interfacing:

1. Back neck facing - cut 1 (D)
2. Front facing - cut 2 (E)
3. Collar - cut 1 (J)



INSTRUCTIONS:

1. Apply fusible interfacing to listed pieces.
2. Sew center back seam. Serge and press seam towards left side.
3. Sew back yoke to back. Serge and press seam towards yoke.
4. Sew darts on lower backs. Press bulk towards center. On left lower back, along vertical vent edge, cut off 5 cm. Apply fusible interfacing to wrong side of the vent on both back pieces. On right side mark center seam line (vent fold-line). Press left side along vent fold line. On right side, press seam allowance to wrong side of vent (6 cm). Match backs on center seam and fasten on upper edge of vent. Serge center back seam separately on each side. Serge vent seam allowances. Sew center back seam from upper edge to vent corner. Trim corner of vent seam allowance on right side. Press center seam open, press vent allowances and fasten them on right side with machine stitch.
5. Place collars right sides together and sew on outer edge and ends. Trim seam in corners. Turn collar out, straighten and press.
6. Pin front facing to front right sides together and sew lapel between marks. Trim seam at marks, turn pieces right side out, straighten and press.
7. On center front cut dart bulk off to 1.0 cm. Lay right center front over left front, fasten on lower edge and sew darts catching unsewn sections of center front edge. Serge and press seam. Sew upper side fronts to upper center front, serge and press towards center.
8. Sew shoulder seams. Serge and press seams towards back. Sew shoulder seams of front/neck facings. Press seams open. Serge outer edge.
9. Sew outer collar into dress neckline and inner collar into neckline of facing. Press seams open and fasten together.
10. Make pleats on lower front with folds directed towards center and sew them at 3.0 cm down from upper edge. Pin pocket bag to lower front right sides together and sew on pocket opening. Turn pocket bag to inside and press. Lay lower front on lower side front and sew pocket bag edges. Serge seam.
11. Sew lower pieces to upper pieces. Serge and press seams upwards.

-
12. Sew right side seam. Serge and press seam towards back. Serge separately left side edges. Sew left side seam from armhole to upper zipper mark and from lower zipper mark down to hem. Press seams open. Install zipper.
 13. Cut a bias tape 4 cm wide. Length is equal to armhole length + 5 cm. Fold bias tape in half lengthwise right side out and press. Pin bias tape to armhole from right side and sew. Trim seams. Turn bias tape to inside and topstitch along the fold. Press.
 14. Serge lower edge of dress, turn under, press and slipstitch.
 15. Fold belt in half lengthwise right sides together and sew around leaving an opening in long side. Trim seams in corners. Turn belt right side out, straighten and press. Sew opening closed.

TECHNICAL DRAWING:

