

Recommendations on fabric: natural/mixed fabric suitable for blouses.

You will also need: fusible interfacing, 6 buttons.

Seam allowances: 1 cm for all seams, 2.0 cm for hem and lower edge of sleeve.

Note on seam allowances:

- If the pattern has double contour the seam allowances are included. They are 1 cm unless specified otherwise.
- If the pattern has single contour, the seam allowances are NOT included and need to be added when laying out the pattern.

Note on length of fabric:

Attention! The amount of fabric needed for your pattern is not included. It will depend on the selected pattern size, the width, and design of the fabric you plan to use. First, print all the paper patterns and lay them out at the width of fabric you plan to use (usually from 90 to 150 cm). Measure how much fabric you will need. Don't forget to account for pieces that need to be cut multiple times and pieces that are cut on the fold.



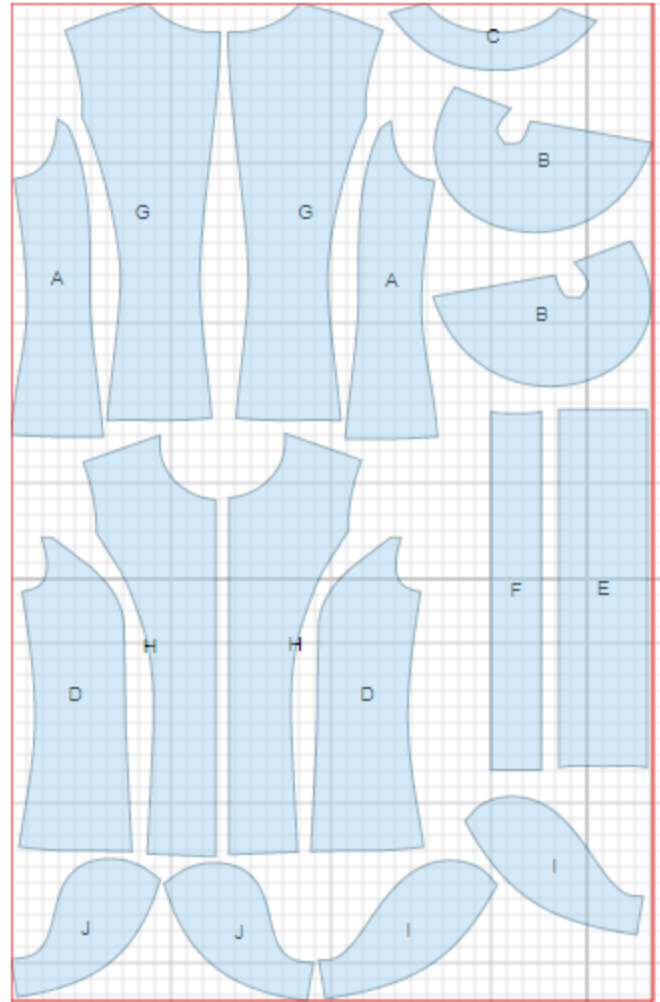
CUTTING:

Main fabric:

1. Side back - cut 2 (A)
2. Collar – cut 2 (B)
3. Back neck facing - cut 1 (C)
4. Side front -cut 2 (D)
5. Right front placket - cut 1 (E)
6. Left front placket - cut 1 (F)
7. Center back - cut 2 (G)
8. Center front - cut 2 (H)
9. Back sleeve - cut 2 (I)
10. Front sleeve - cut 2 (J)

Fusible interfacing:

1. Back neck facing - cut 1 (C)
2. Right front placket - cut 1 (E)
3. Left front placket - cut 1 (F)



INSTRUCTIONS:

1. Apply fusible interfacing to listed pieces.
2. Sew side fronts to center fronts. Serge and press seams towards center. Serge curved edge of collar, turn under and topstitch. Make pleats on collar. Topstitch pleats from wrong side at 3 cm from upper edge. Place collar with its right side to wrong side of front and sew on neckline. Turn collar to outside, press. Tack pieces on shoulder edges, neckline and center edge.
3. Sew shoulder darts on backs. Press bulk towards center. Sew side backs to front backs. Serge and press seams towards center. Sew center back seam, serge and press towards left side seam. Serge outer edge of back neck facing. Pin facing to neckline right sides together and sew. Trim seam, turn facing to inside, press.
4. Right front: apply fusible interfacing to right placket from edge to line "inner edge of panel" from side of buttonhole marking. Right placket to front, press seam towards placket. Press placket to inside along lines "stand edge" and "stand edge of blind panel". Topstitch placket into connecting seam. Turn inner part of placket towards front band and press.
Left placket: sew left placket to front, press seam towards placket. Turn inner edge under at 1 cm and topstitch into connecting seam. Make buttonholes.
5. Sew shoulder seams inserting front between back and facing. Serge and press seams towards back. Sew side seams, serge and press towards back.
6. Sew sleeve seam, serge and press. Serge lower edge of sleeve. Make a gathering stitch on upper edge of sleeve and gather fullness. Lay back sleeve over front sleeve and fasten on upper edge. Sew sleeve into armhole. Serge seam.
7. Serge hem of blouse, turn under, press and topstitch.
8. Sew buttons on left front.

TECHNICAL DRAWING:

