

Recommendations on fabric: natural/mixed fabric suitable for dresses.

You will also need: invisible zipper.

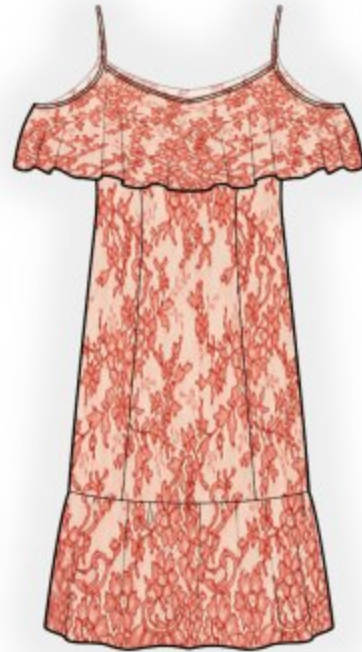
Seam allowances: 1 cm for all seams, 2.0 cm for lower edge of flounce and placket.

Note on seam allowances:

- If the pattern has double contour the seam allowances are included. They are 1 cm unless specified otherwise.
- If the pattern has single contour, the seam allowances are NOT included and need to be added when laying out the pattern.

Note on length of fabric:

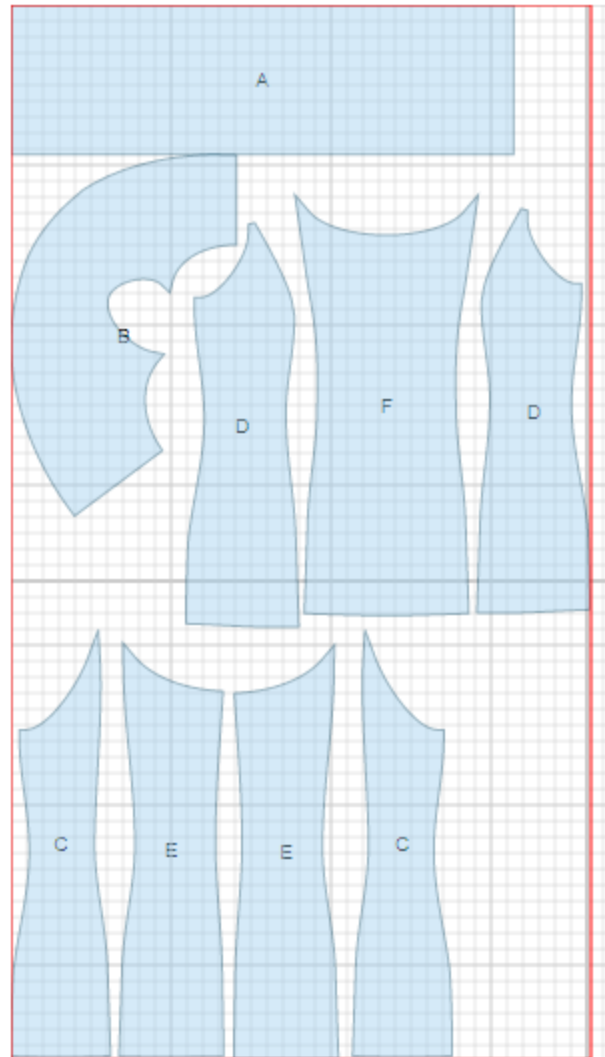
Attention! The amount of fabric needed for your pattern is not included. It will depend on the selected pattern size, the width, and design of the fabric you plan to use. First, print all the paper patterns and lay them out at the width of fabric you plan to use (usually from 90 to 150 cm). Measure how much fabric you will need. Don't forget to account for pieces that need to be cut multiple times and pieces that are cut on the fold.



CUTTING:

Main fabric:

1. Placket - cut 1 (A)
2. Flounce – cut 1 (B)
3. Side back - cut 2 (C)
4. Side front - cut 2 (D)
5. Center back - cut 2 (E)
6. Center front - cut 1 (F)



INSTRUCTIONS:

1. Sew side fronts to front and side backs to backs. Serge and press seams towards center.
2. Sew center back seam. Serge and press seam towards left side.
3. Serge separately left side edges. Sew left side seam from armhole to upper zipper mark and from lower zipper mark down to hem. Press seams open. Install zipper. Sew right side seam. Serge and press seam towards back.
4. Cut a bias tape 4 cm wide. Length is equal to armhole length + 5 cm. Fold bias tape in half lengthwise right side out and press. Pin bias tape to armhole from right side and sew. Trim seams. Turn bias tape to inside and topstitch along the fold. Press. Finish left armhole in two steps: first front armhole, then back armhole. Finish flounce armhole section the same way.
5. Sew center flounce seam. Serge and press seam towards left side. Turn lower edge of flounce under twice at 1 cm and topstitch. Pin flounce with its wrong side to right side of dress and fasten on upper edge. Cut a bias tape 4 cm wide. Length is equal to front/back neckline + length of shoulder straps. Finish back neckline with bias tape making a shoulder straps and then front neckline making second strap.
6. Sew center seam of lower placket. Serge and press seam towards left side. Make a gathering stitch on upper edge and gather fullness. Sew placket to lower edge of dress. Serge and press seam upwards.
7. Serge lower edge of dress, turn under and topstitch.

TECHNICAL DRAWING:

