

Recommendations on fabric: natural/mixed fabric suitable for blouses.

You will also need: fusible interfacing; elastic of 5 cm wide.

Seam allowances: 1 cm for all seams, 2.0 cm for hems.

**Note on seam allowances:**

- If the pattern has double contour the seam allowances are included. They are 1 cm unless specified otherwise.
- If the pattern has single contour, the seam allowances are NOT included and need to be added when laying out the pattern.

**Note on length of fabric:**

*Attention! The amount of fabric needed for your pattern is not included. It will depend on the selected pattern size, the width, and design of the fabric you plan to use. First, print all the paper patterns and lay them out at the width of fabric you plan to use (usually from 90 to 150 cm). Measure how much fabric you will need. Don't forget to account for pieces that need to be cut multiple times and pieces that are cut on the fold.*



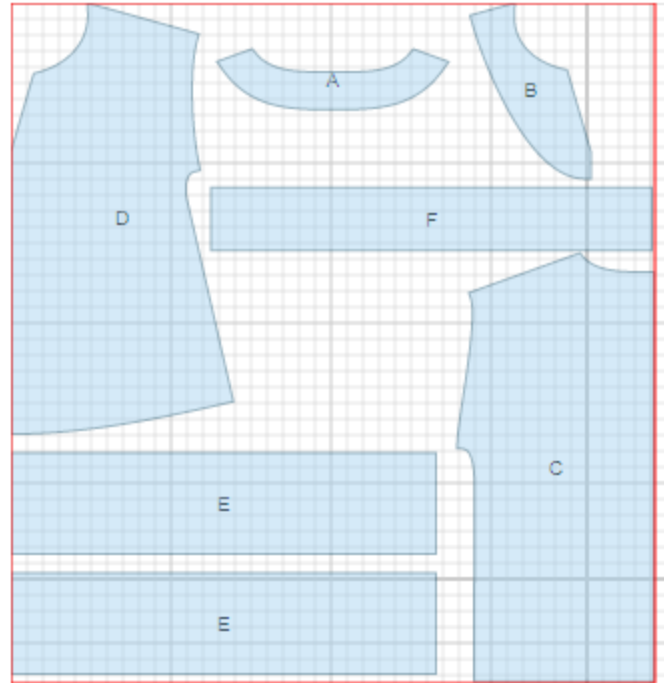
**CUTTING:**

Main fabric:

1. Back neck facing - cut 1 (A)
2. Front neck facing – cut 1 on fold (B)
3. Back - cut 1 on fold (C)
4. Front - cut 1 on fold (D)
5. Sleeve - cut 2 (E)
6. Bow - cut 1 (F)

Fusible interfacing:

1. Back neck facing - cut 1 (A)
2. Front neck facing – cut 1 on fold (B)



---

**INSTRUCTIONS:**

1. Apply fusible interfacing to facings. Apply fusible interfacing to neckline corner.
2. Sew shoulder seams. Serge and press seams towards back.
3. Make a gathering stitch on upper edge of sleeve and gather fullness. Sew sleeve in, serge seam.
4. Sew side and sleeve seams with one continuous stitch. Serge and press seams towards back.
5. Sew shoulder seams of facings and press open. Serge outer edge. Pin facing to blouse right sides together and sew neckline. End stitch in corner closest to edge. Clip into seam, turn facing to inside and press. Topstitch seam onto facing at 0.2 cm from seam. Tack facing to shoulder seams.
6. Take elastic of needed length. Sew elastic into ring. Sew elastic to front and back stretching it. Sew at 0.5 cm from edge of elastic.
7. Fold bow in half lengthwise right sides together. Sew edges leaving an opening for turnup. Trim corners, turn bow right side out, sew opening closed. Make a bow and sew it to blouse as shown in technical drawing.
8. Turn hems twice at 1 cm and topstitch.

TECHNICAL DRAWING:

