

Recommendations on fabric: natural/mixed fabric suitable for blouses.

You will also need: invisible zipper.

Seam allowances: 1 cm for all seams, 2.0 cm for hem.

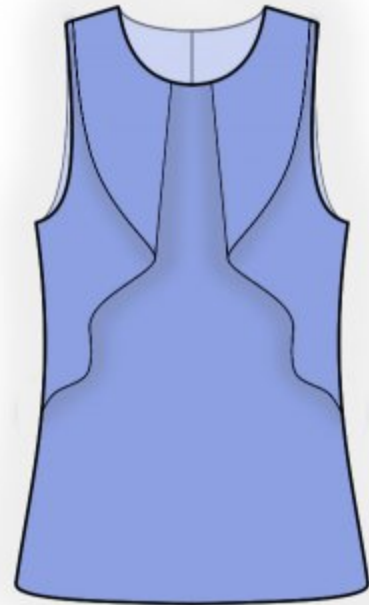
Note on seam allowances:

- If the pattern has double contour the seam allowances are included. They are 1 cm unless specified otherwise.

- If the pattern has single contour, the seam allowances are NOT included and need to be added when laying out the pattern.

Note on length of fabric:

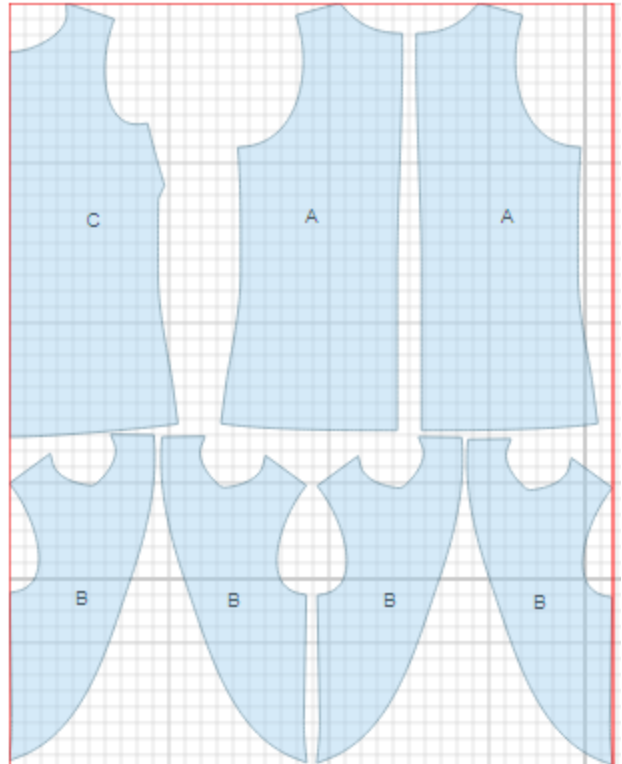
Attention! The amount of fabric needed for your pattern is not included. It will depend on the selected pattern size, the width, and design of the fabric you plan to use. First, print all the paper patterns and lay them out at the width of fabric you plan to use (usually from 90 to 150 cm). Measure how much fabric you will need. Don't forget to account for pieces that need to be cut multiple times and pieces that are cut on the fold.



CUTTING:

Main fabric:

1. Back - cut 2 (A)
2. Flounce – cut 4 (B)
3. Front - cut 1 on fold (C)



INSTRUCTIONS:

1. Sew bust darts on front. Press bulk upwards. Sew waist darts on backs, press bulk towards center. Serge separately center back edges. Sew center back seam from zipper markdown to hem. Press seam open, pressing slit for zipper. Install zipper.
2. Place flounces right sides together and sew outer edge. Turn flounce right side out, straighten and press. Pin edges of flounce on contour. Place flounce on front, turn back and fold shoulder section of flounce according to marking. Pin flounce to front on shoulder and side seams, on armhole and neckline.
3. Sew shoulder and side seams. Serge and press seams towards back.
4. Cut a bias tape 4 cm wide from main fabric. Length is equal to neckline length + 5 cm. Fold bias tape in half lengthwise right side out and press. Pin bias tape to neckline from right side and sew. Turn bias tape to inside and topstitch along the fold. Press. Finish armholes the same way.
5. Serge lower edge of blouse, turn under and topstitch.

TECHNICAL DRAWING:

