

Recommendations on fabric: whipcord, medium to high stretch-knit fabric.

You will also need: fusible interfacing, lining, separable zipper.

Seam allowances: 1 cm for all seams.

Note on seam allowances:

- If the pattern has double contour the seam allowances are included. They are 1 cm unless specified otherwise.
- If the pattern has single contour, the seam allowances are NOT included and need to be added when laying out the pattern.

Note on length of fabric:

Attention! The amount of fabric needed for your pattern is not included. It will depend on the selected pattern size, the width, and design of the fabric you plan to use. First, print all the paper patterns and lay them out at the width of fabric you plan to use (usually from 90 to 150 cm). Measure how much fabric you will need. Don't forget to account for pieces that need to be cut multiple times and pieces that are cut on the fold.



CUTTING:

Main fabric:

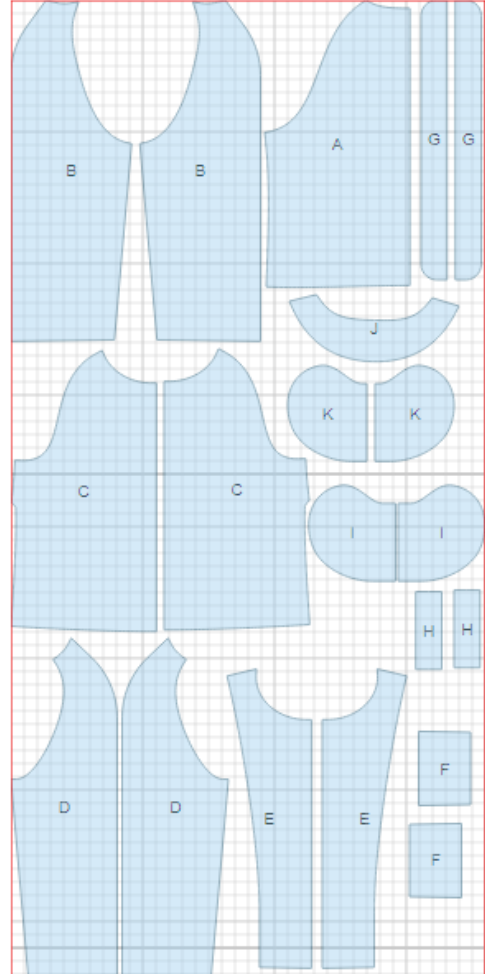
1. Back - cut 1 on fold (A)
2. Back sleeve – cut 2 (B)
3. Front - cut 2 (C)
4. Front sleeve - cut 2 (D)
5. Front facing - cut 2 (E)
6. Stripe - cut 2 (F)
7. Placket -cut 2 (G)
8. Off-set welt - cut 2 (H)
9. Big pocket bag - cut 2 (I)
10. Back neck facing - cut 1 (G)

Lining:

1. Back - cut 1 on fold (A)
2. Front - cut 2 (C)
3. Back sleeve – cut 2 (B)
4. Front sleeve - cut 2 (D)
5. Small pocket bag - cut 2 (K)

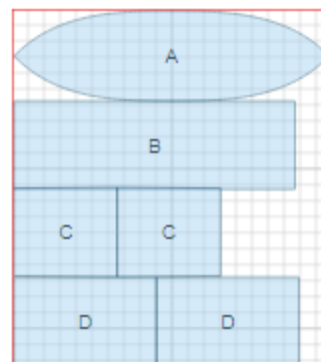
Fusible interfacing:

1. Front facing - cut 2 (E)
2. Back neck facing - cut 1 (G)
3. Placket - cut 1 (G)
4. Off-set welt - cut 2 (H)



Knit fabric:

1. Collar - cut 1 (A)
2. Back waistband - cut 1 (B)
3. Front waistband - cut 2 (C)
4. Cuff - cut 2 (D)



*ATTENTION: Lining is cut using main fabric patterns excluding the width of front facing. Add a pleat on lining.

INSTRUCTIONS:

1. Apply fusible interfacing to listed pieces.
2. Sew darts on fronts. Press bulk upwards.
3. Mark pocket location on fronts. Apply fusible interfacing to this place. Fold off-set welt in half lengthwise wrong sides together and press. Topstitch small pocket bag on inner side of welt. Sew welt to front on lower line of pocket marking. Sew big pocket bag to front on upper line of pocket marking. End stitch at short lines of marking. Cut pocket opening. Make cuts to corners at 1 - 1.5 cm from ends of pocket opening. Turn off-set welt and big pocket bag to inside through the opening. Fasten ends of pocket from wrong side with double back stitch. Sew pocket bags edges.
4. Sew back sleeve to back. Serge and press seam open. Sew front sleeve to front. Serge and press seam open. Sew upper sleeve seam. Press seam open.
5. Press collar in half lengthwise right side out. Sew collar into front/back neckline.
6. Place plackets right sides together and sew outer edge. Clip seam on curves, turn placket right side out, straighten and press. Topstitch right part of zipper on placket.
7. Sew stripe to front waistband. Press and topstitch seam. Sew waistband pieces to fronts. Sew back waistband to back.
8. Place fronts right sides together and level edges. Sew zipper to front band edge.
9. Sew front facing to inner edge of stripe. Pin front facing to front right sides together and sew along front edge and neckline. Sew from right side. Turn front bands right side out, straighten and press.
10. Sew lower sleeve seam and side seam with one continuous stitch. Press seam open.
11. Sew seams on lining leaving an opening in lower seam of right sleeve. Sew lining to inner edges of front facings, back neck facing and inner edge of waistband. Turn jacket right side out through the opening in sleeve. Sew opening closed. Make a fastening stitch into waistband connecting seam.

12. Sew cuff into ring. Press cuff in half right side out. Sew cuffs to lower edge of sleeves and lining. Serge seam.

TECHNICAL DRAWING:

